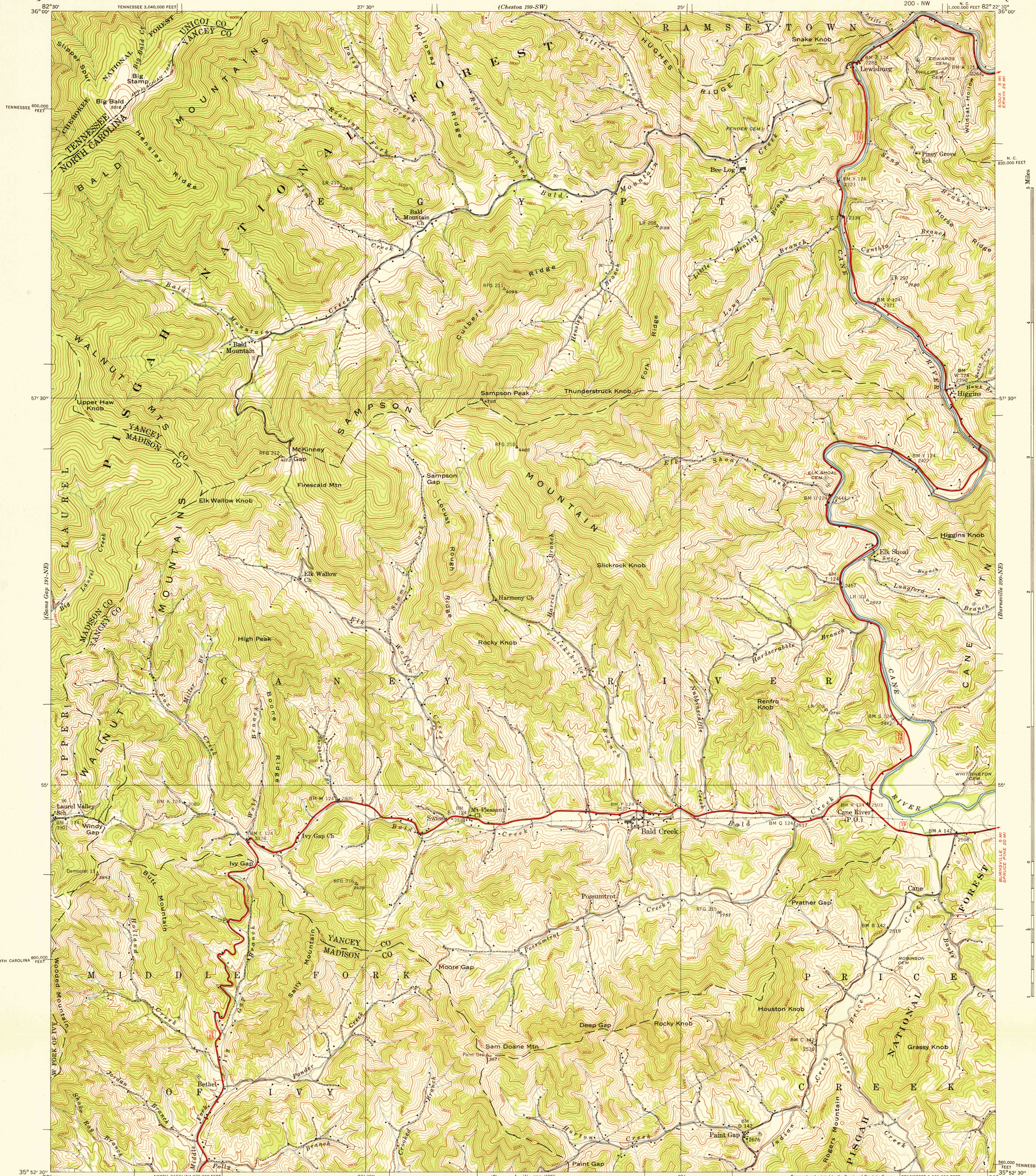


U. S. G. S.
FILE COPY
Inspection and Editing.

UNITED STATES
TENNESSEE VALLEY AUTHORITY
MAPS AND SURVEYS DIVISION

NORTH CAROLINA - TENNESSEE
BALD CREEK QUADRANGLE

200 - NW
N. C.
1:1,000,000 FEET 82° 22' 30" 36° 00'



Control by USC&GS, USGS, and TVA.
Topography by Fairchild Aerial Surveys, Inc.
by stereophotogrammetric methods.
Field examination by Tennessee Valley Authority - 1939
Office inspection and review by the Geological Survey.

Maps distributed by the Geological Survey.

APPROXIMATE MEAN
DECLINATION, 1939

Scale 24000
1 inch = 2 miles
1 centimeter = 1000 feet
1 kilometer = 1000 meters
Contour interval 40 feet with 20 foot contours shown by broken line.
Datum is mean sea level

USCS
Historical File
Topographic Division

Polyconic projection. 1927 North American datum
10,000 foot grid based on North Carolina and
Tennessee rectangular coordinate systems

ROUTES USUALLY TRAVELED
HARD, IMPERVIOUS SURFACES
OTHER SURFACE IMPROVEMENTS
19 U. S. ROUTE 69 STATE ROUTE

BALD CREEK, N. C.-TENN.
200 - NW
Edition of 1939
N5552.5-W8222.5 / 7.5

U. S. G. S.
FILE COPY
Inspection and Editing.

HISTORICAL

APR 1 - 1941