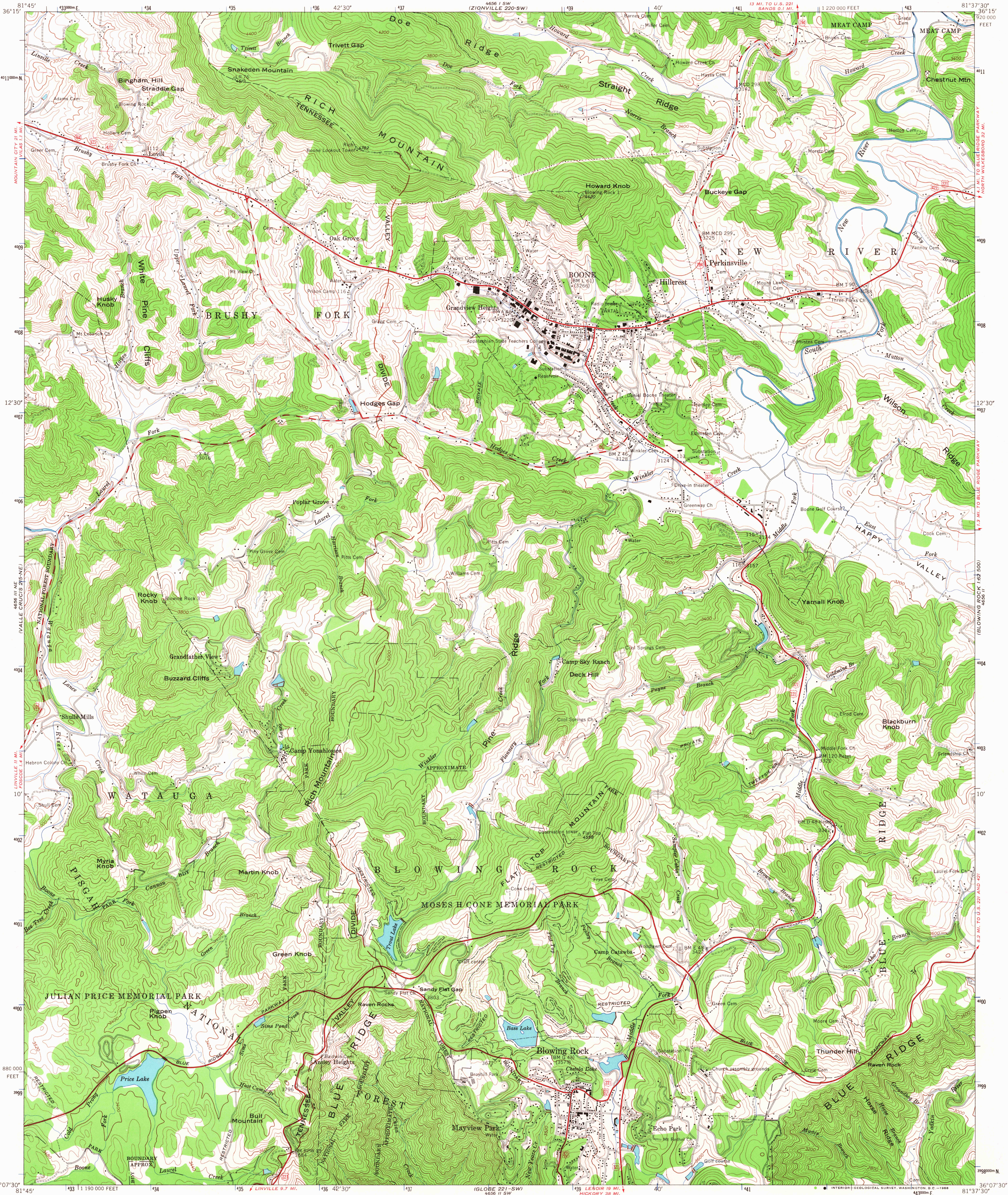


UNITED STATES
DEPARTMENT OF THE INTERIOR
GEOLOGICAL SURVEY

UNITED STATES
TENNESSEE VALLEY AUTHORITY
MAPS AND SURVEYS BRANCH

BOONE QUADRANGLE
NORTH CAROLINA-WATAUGA CO.
7.5 MINUTE SERIES (TOPOGRAPHIC) 221-NW



Mapped and edited by Tennessee Valley Authority
Published by the Geological Survey

Control by USC&GS, USGS, and TVA

Topography by multiplex methods from aerial
photographs taken 1953. Field examination by TVA, 1959

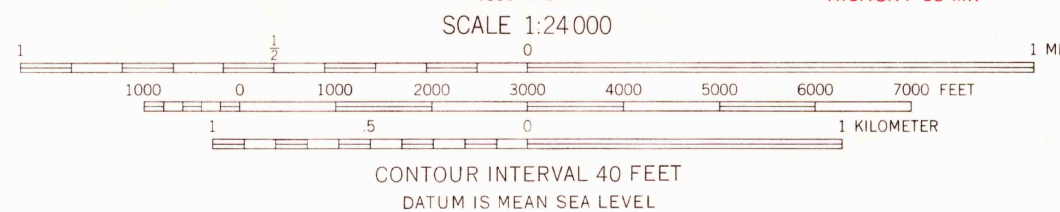
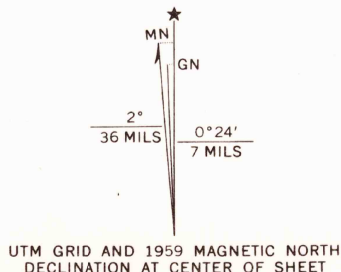
Polyconic projection, 1927 North American datum

10,000-foot grid based on North Carolina
rectangular coordinate system

1000 meter Universal Transverse Mercator Grid ticks.

Zone 17, shown in blue

Fine red dashed lines indicate selected fence and field lines
visible on aerial photographs. This information is unchecked



THIS MAP COMPLIES WITH NATIONAL MAP ACCURACY STANDARDS
FOR SALE BY U. S. GEOLOGICAL SURVEY, WASHINGTON, D. C. 20242.
U. S. TENNESSEE VALLEY AUTHORITY, CHATTANOOGA, TENN. 37401 OR KNOXVILLE, TENN. 37902
A FOLDER DESCRIBING TOPOGRAPHIC MAPS AND SYMBOLS IS AVAILABLE ON REQUEST

USGS
Historical File
Topographic Division



FILE COPY
TOPOGRAPHIC DIVISION

ROAD CLASSIFICATION	
Heavy-duty	Poor motor road
Medium-duty	Wagon and jeep track
Light-duty	Foot trail
U. S. Route	State Route
In developed areas, only through roads are classified	

BOONE, N. C.
N3607.5-W8137.5/7.5

1959

AMS 4656 II NW SERIES V842

4270
FEB 9 1968