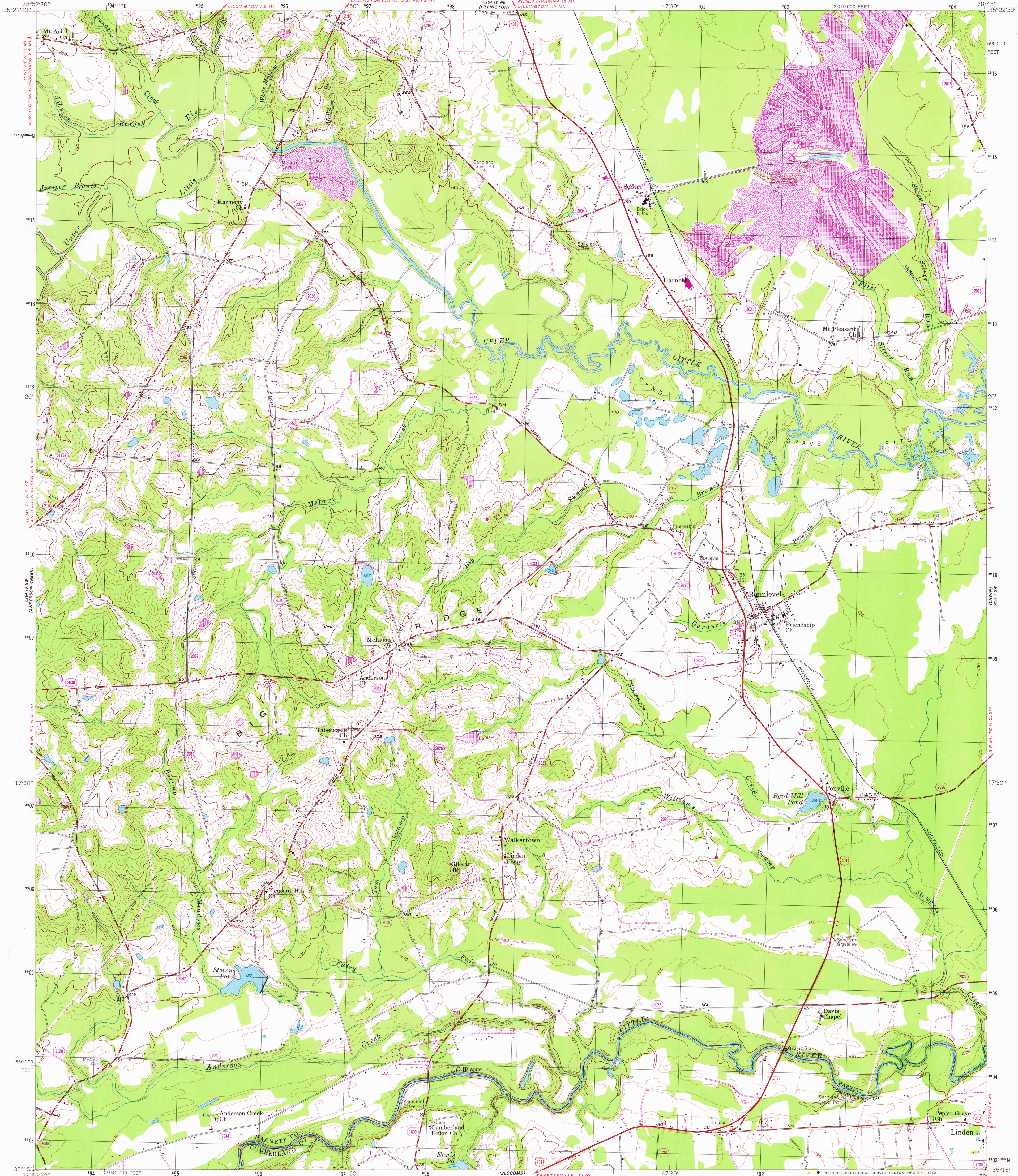


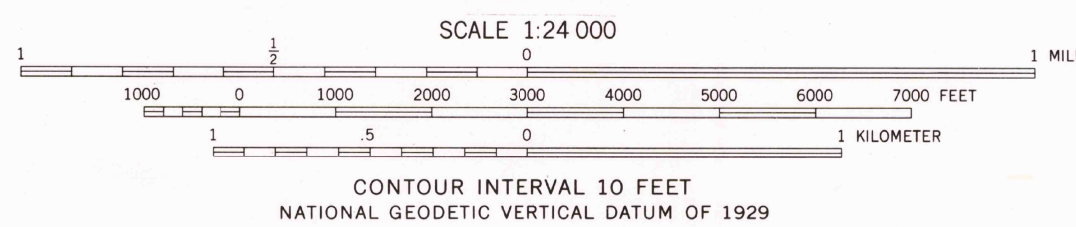
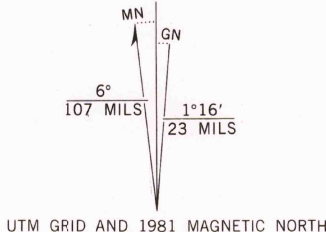
UNITED STATES
DEPARTMENT OF THE INTERIOR
GEOLOGICAL SURVEY

BUNNLEVEL QUADRANGLE
NORTH CAROLINA
7.5 MINUTE SERIES (TOPOGRAPHIC)



Mapped, edited, and published by the Geological Survey
Control by USGS, NOS/NOAA, and USCE
Topography by photogrammetric methods from aerial photographs
taken 1955. Field checked 1956
Polyconic projection. 10,000-foot grid ticks based on North Carolina
coordinate system. 1000-meter Universal Transverse Mercator
grid, zone 17. 1927 North American Datum
To place on the predicted North American Datum 1983 move
the projection lines 12 meters south and 23 meters west
as shown by dashed corner ticks
Fine red dashed lines indicate selected fence and field lines where
generally visible on aerial photographs. This information is unchecked

Revisions shown in purple and woodland compiled in
cooperation with State of North Carolina agencies from
aerial photographs taken 1980 and other sources. This
information not field checked. Map edited 1981



THIS MAP COMPLIES WITH NATIONAL MAP ACCURACY STANDARDS
FOR SALE BY U.S. GEOLOGICAL SURVEY, RESTON, VIRGINIA 22092.
A FOLDER DESCRIBING TOPOGRAPHIC MAPS AND SYMBOLS IS AVAILABLE ON REQUEST



QUADRANGLE LOCATION

ROAD CLASSIFICATION
Heavy-duty ——— Light-duty ———
Medium-duty ——— Unimproved dirt ———
U.S. Route ——— State Route ———

RETURN TO:
USGS NMD HISTORICAL MAP ARCHIVES

BUNNLEVEL, N. C.
N 3515—W 7845/7.5
1956
PHOTOREVISED 1981
DMA 5254 IV SE-SERIES V842

JUL 1982
2/ce