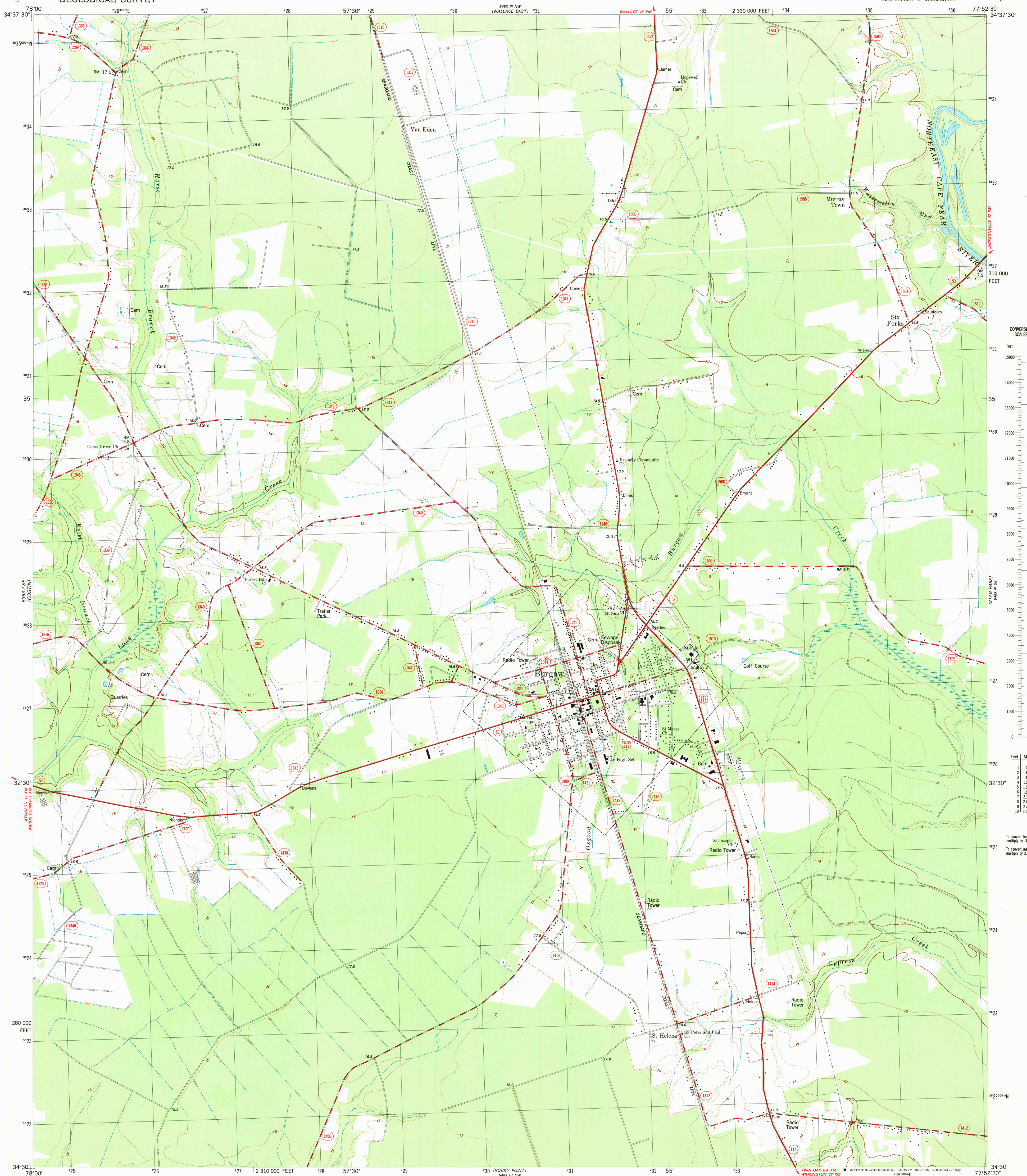
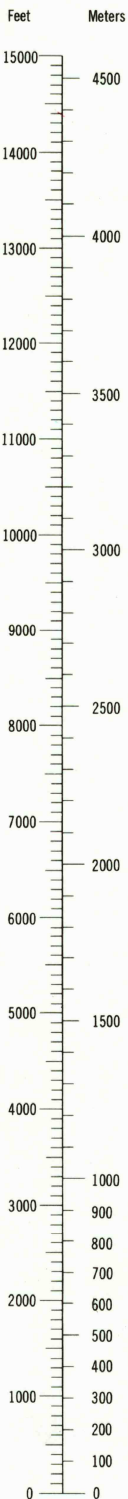


UNITED STATES
DEPARTMENT OF THE INTERIOR
GEOLOGICAL SURVEY

BURGAU QUADRANGLE
NORTH CAROLINA-PENDER CO.
7.5 MINUTE SERIES (TOPOGRAPHIC)
SW 1/4 BURGAU 15' QUADRANGLE



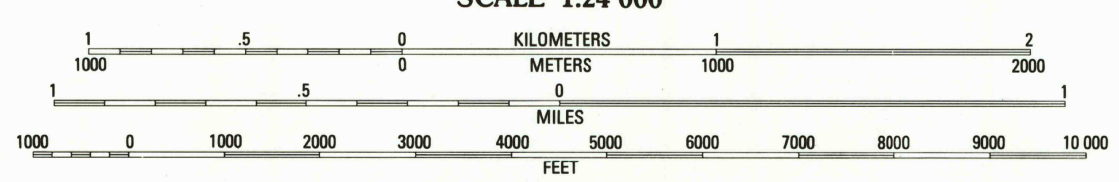
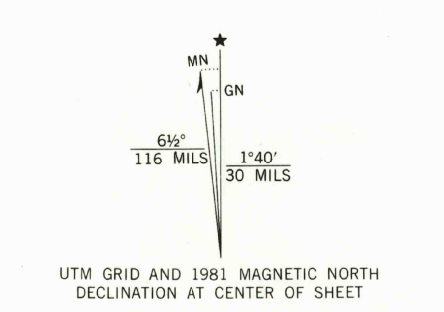
CONVERSION
SCALES



Feet	Meters
1	3048
2	6096
3	9144
4	12192
5	15240
6	18288
7	21336
8	24384
9	27432
10	30480

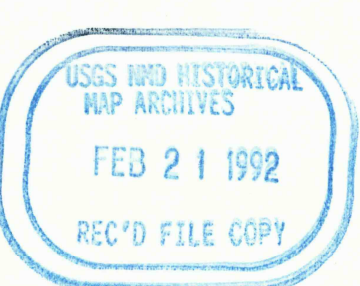
To convert feet to meters
multiply by 3048
To convert meters to feet
multiply by 3.2808

Mapped, edited, and published by the Geological Survey
Control by USGS, NOS/NOAA, and North Carolina Geodetic Survey
Topography by photogrammetric methods from aerial photographs
taken 1977. Field checked 1979. Map edited 1981
Projection and 10,000-foot grid ticks: North Carolina coordinate
system (Lambert conformal conic)
1000-meter Universal Transverse Mercator grid, zone 18
1927 North American Datum
The difference between 1927 North American Datum and North American
Datum of 1983 (NAD 83) for 7.5-minute intersections is given in USGS
Bulletin 1875. The NAD 83 is shown by dashed corner ticks
Fine red dashed lines indicate selected fence and field lines where
generally visible on aerial photographs. This information is unchecked



CONTOUR INTERVAL 2 METERS
SUPPLEMENTARY CONTOUR INTERVAL 1 METER
DASHED SUPPLEMENTARY CONTOURS ARE APPROXIMATE
NATIONAL GEODETIC VERTICAL DATUM OF 1929
CONTROL ELEVATIONS SHOWN TO THE NEAREST 0.1 METER
OTHER ELEVATIONS SHOWN TO THE NEAREST 0.5 METER
THIS MAP COMPLIES WITH NATIONAL MAP ACCURACY STANDARDS
FOR SALE BY U.S. GEOLOGICAL SURVEY
DENVER, COLORADO 80225, OR RESTON, VIRGINIA 22092
A FOLDER DESCRIBING TOPOGRAPHIC MAPS AND SYMBOLS IS AVAILABLE ON REQUEST

QUADRANGLE LOCATION
COUNTS AND ELEVATIONS
IN METERS



BURGAU, N. C.
SW 1/4 BURGAU 15' QUADRANGLE
34077-E8-TF-024
1981
PHOTOINSPECTED 1988
DMA 5453 III SW-SERIES V842

ROAD CLASSIFICATION
Primary highway, hard surface
Secondary highway, hard surface
Unimproved road
Interstate Route
U. S. Route
State Route