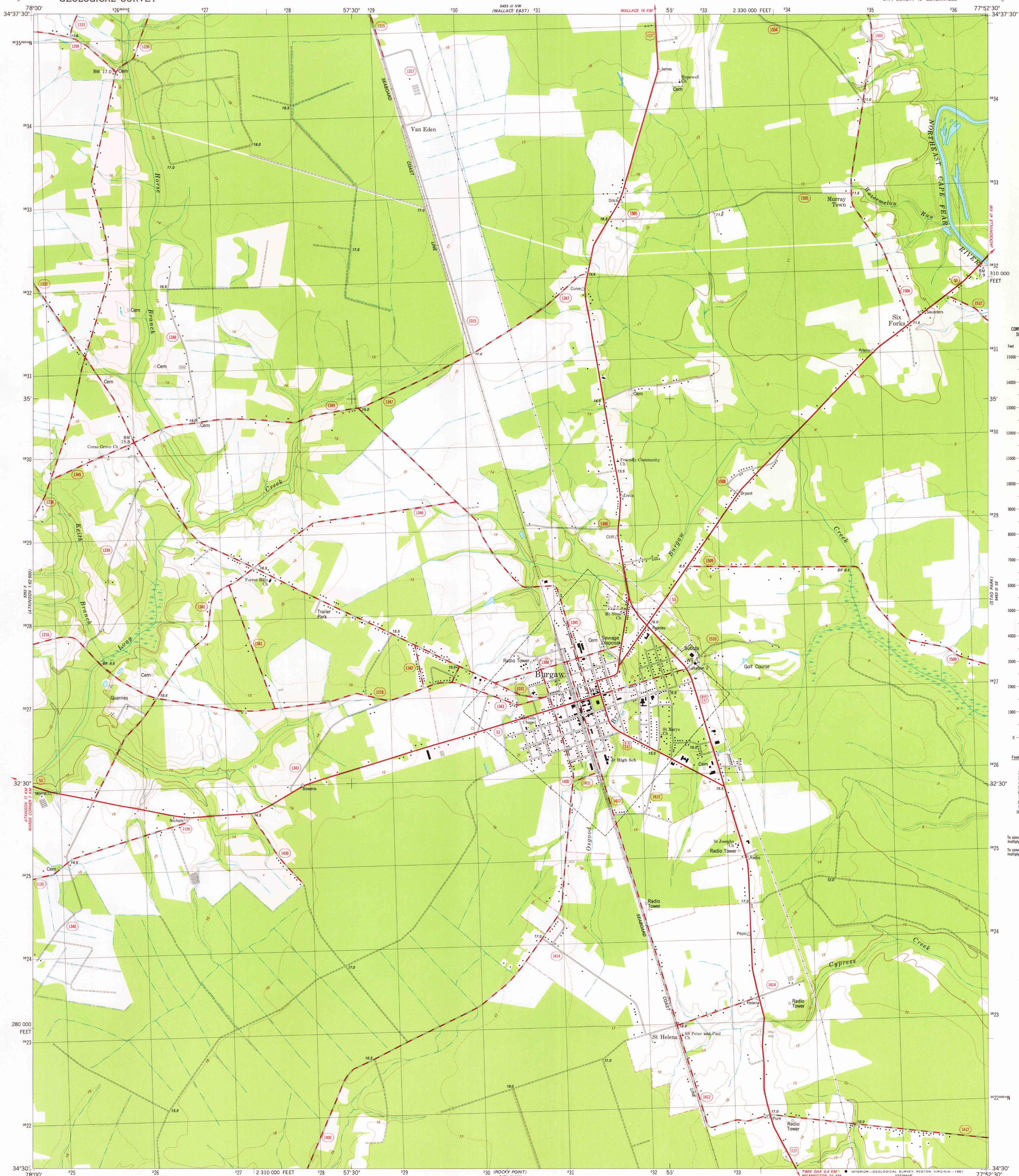


UNITED STATES
DEPARTMENT OF THE INTERIOR
GEOLOGICAL SURVEY

BURGAW QUADRANGLE
NORTH CAROLINA-PENDER CO.
7.5 MINUTE SERIES (TOPOGRAPHIC)
SW/4 BURGAW 15' QUADRANGLE

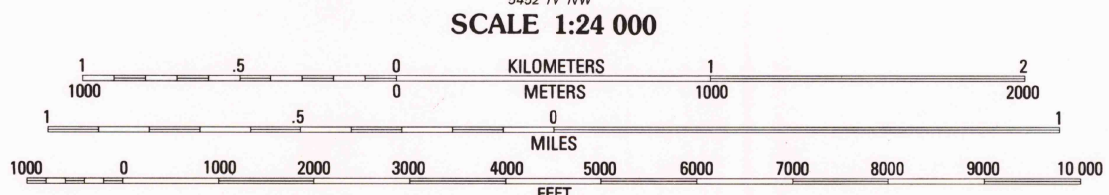
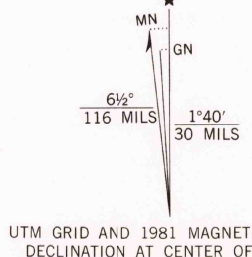


CONVERSION SCALES	
Feet	Meters
15000	4500
14000	
13000	4000
12000	
11000	3500
10000	
9000	3000
8000	
7000	2500
6000	
5000	1500
4000	
3000	900
2000	600
1000	300
0	0

Feet	Meters
1	3048
2	6096
3	9144
4	12192
5	15240
6	18288
7	21336
8	24384
9	27432
10	30480

To convert feet to meters
multiply by .3048
To convert meters to feet
multiply by 3.2808

Mapped, edited, and published by the Geological Survey
Control by USGS, NOS/NOAA, and North Carolina Geodetic Survey
Topography by photogrammetric methods from aerial photographs
taken 1977. Field checked 1979. Map edited 1981
Projection and 10,000-foot grid ticks: North Carolina coordinate
system (Lambert conformal conic)
1000-meter Universal Transverse Mercator grid, zone 18
1927 North American Datum
To place on the predicted North American Datum 1983
move the projection lines 14 meters south and
25 meters west as shown by dashed corner ticks
Fine red dashed lines indicate selected fence and field lines where
generally visible on aerial photographs. This information is unchecked



CONTOUR INTERVAL 2 METERS
SUPPLEMENTARY CONTOUR INTERVAL 1 METER
DASHED SUPPLEMENTARY CONTOURS ARE APPROXIMATE
NATIONAL GEODETTIC VERTICAL DATUM OF 1929
CONTROL ELEVATIONS SHOWN TO THE NEAREST 0.1 METER
OTHER ELEVATIONS SHOWN TO THE NEAREST 0.5 METER

THIS MAP COMPLIES WITH NATIONAL MAP ACCURACY STANDARDS
FOR SALE BY U. S. GEOLOGICAL SURVEY, RESTON, VIRGINIA 22092
A FOLDER DESCRIBING TOPOGRAPHIC MAPS AND SYMBOLS IS AVAILABLE ON REQUEST



QUADRANGLE LOCATION
CONTOURS AND ELEVATIONS
IN METERS

ROAD CLASSIFICATION
Primary highway, hard surface
Secondary highway, hard surface
Unimproved road
Light-duty road, hard or improved surface
U. S. Route
State Route

BURGAW, N. C.
SW/4 BURGAW 15' QUADRANGLE
N3430-W7752.5/7.5

1981

DMA 5453 III SW-SERIES V842