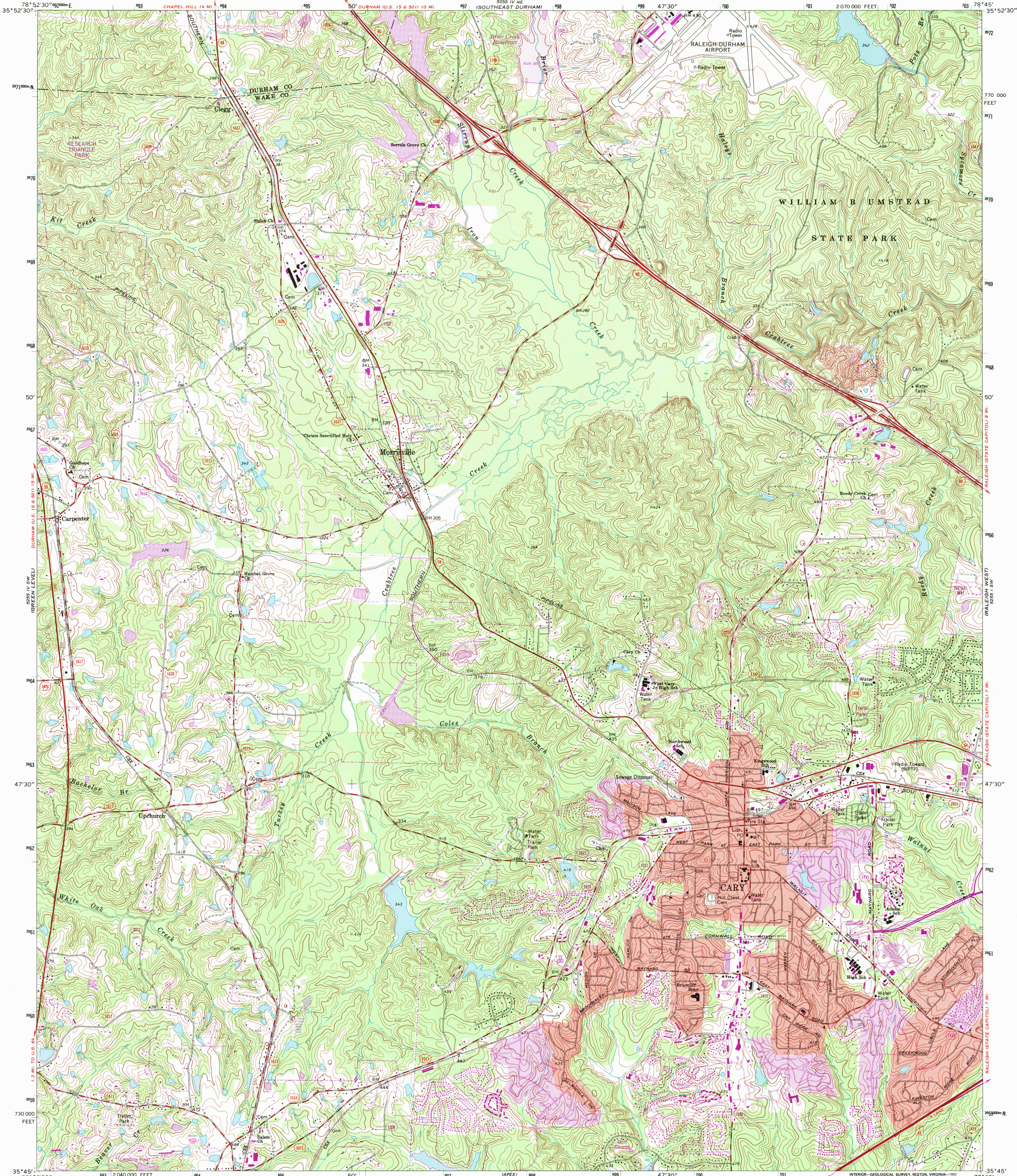


UNITED STATES
DEPARTMENT OF THE INTERIOR
GEOLOGICAL SURVEY

STATE OF NORTH CAROLINA
DEPARTMENT OF NATURAL AND ECONOMIC RESOURCES
RALEIGH, NORTH CAROLINA

CARY QUADRANGLE
NORTH CAROLINA
7.5 MINUTE SERIES (TOPOGRAPHIC)
SE/4 DURHAM SOUTH 15' QUADRANGLE



Mapped, edited, and published by the Geological Survey

Control by USGS, NOS/NOAA, USCE, and North Carolina
Geodetic Survey

Topography by photogrammetric methods from aerial photographs
taken 1972. Field checked 1973.

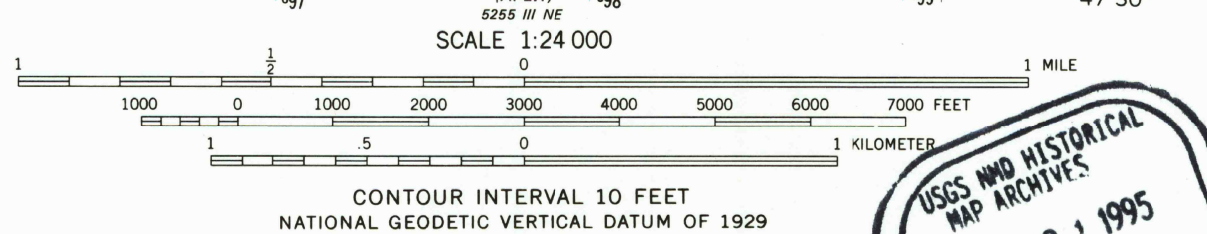
Projection and 10,000-foot grid ticks: North Carolina coordinate
system (Lambert conformal conic). 1000-meter Universal
Transverse Mercator grid ticks, zone 17, shown in blue. 1927
North American Datum.

The difference between 1927 North American Datum and North American
Datum of 1983 (NAD 83) for 7.5-minute intersections is given in USGS
Bulletin 1875. The NAD 83 is shown by dashed corner ticks.

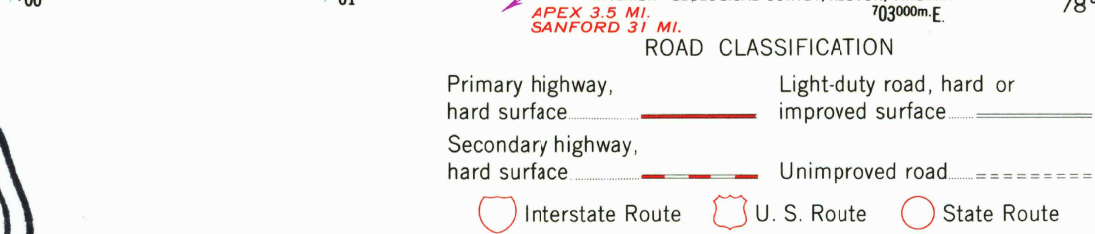
Red tint indicates areas in which only landmark buildings are shown.

There may be private inholdings within the boundaries of
the National or State reservations shown on this map.

Purple hatching indicates area to be submerged
Map photinspected 1988
No major culture or drainage changes observed



THIS MAP COMPLIES WITH NATIONAL MAP ACCURACY STANDARDS
FOR SALE BY U.S. GEOLOGICAL SURVEY
DENVER, COLORADO 80225 OR RESTON, VIRGINIA 22092
A FOLDER DESCRIBING TOPOGRAPHIC MAPS AND SYMBOLS IS AVAILABLE ON REQUEST



Revisions shown in purple and woodland compiled in
cooperation with State of North Carolina agencies from
aerial photographs taken 1984 and other sources. This
information not field checked. Map edited 1987.
Purple tint indicates extension of urban areas.

CARY, N. C.
SE/4 DURHAM SOUTH 15' QUADRANGLE
35078-G7-TF-024
PHOTOINSPECTED 1988
1973
PHOTOREVISED 1987
DMA 5255 IV SE - SERIES V842

