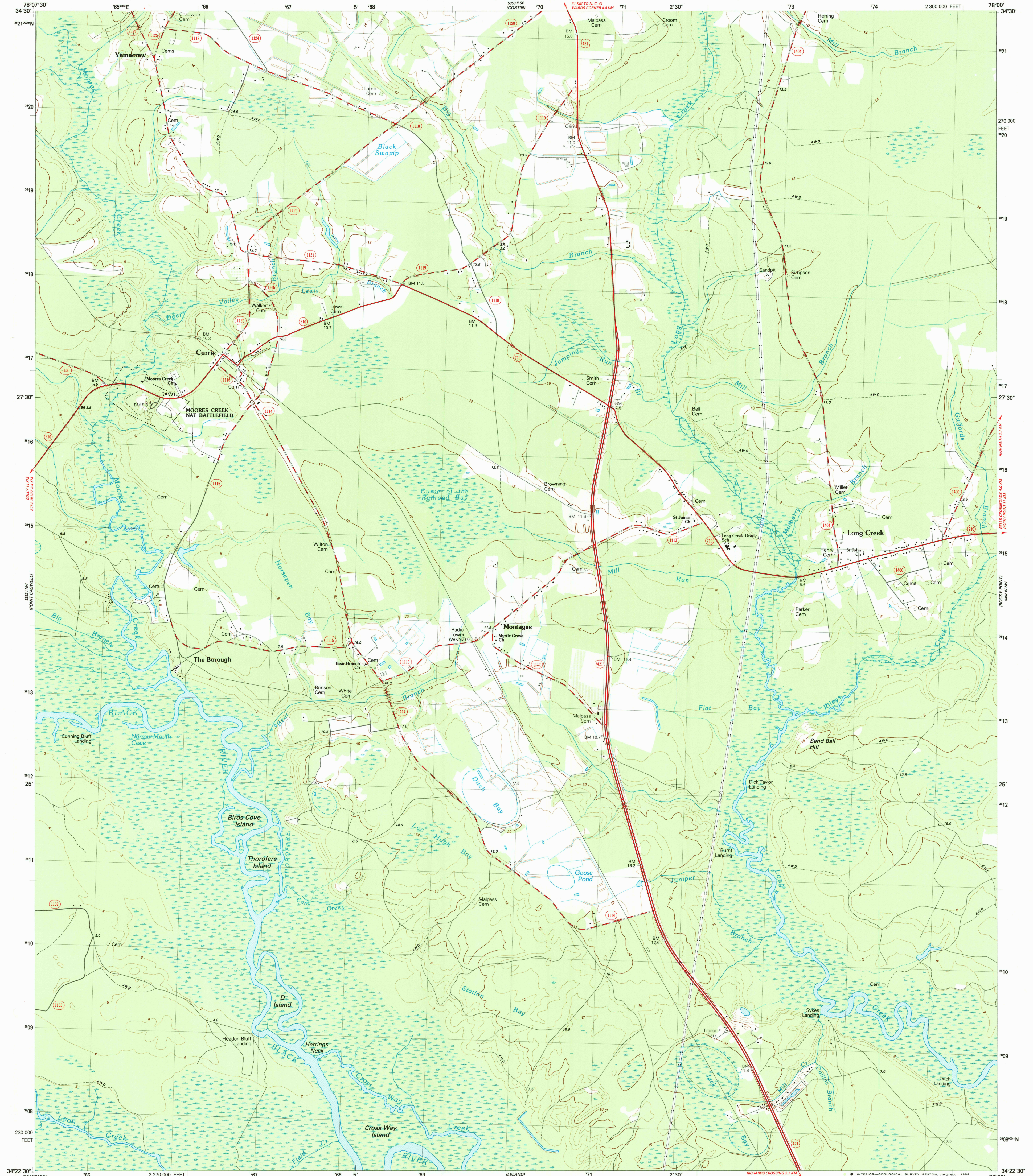


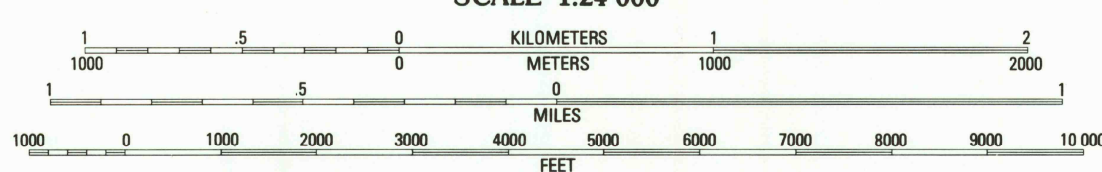
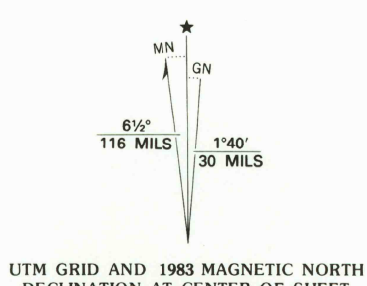
UNITED STATES
DEPARTMENT OF THE INTERIOR
GEOLOGICAL SURVEY

STATE OF NORTH CAROLINA
DEPARTMENT OF NATURAL RESOURCES
AND COMMUNITY DEVELOPMENT
RALEIGH, NORTH CAROLINA

CURRIE QUADRANGLE
NORTH CAROLINA—PENDER CO.
7.5 MINUTE SERIES (TOPOGRAPHIC)
NE 4 ACME 15' QUADRANGLE



Produced by the United States Geological Survey
Control by USGS, NOS/NOAA, and North Carolina Geodetic Survey
Compiled by photogrammetric methods from aerial photographs
taken 1979. Field checked 1981. Map edited 1983
Projection and 10,000-foot grid ticks: North Carolina coordinate
system (Lambert conformal conic)
1000-meter Universal Transverse Mercator grid, zone 17
1927 North American Datum
To place on the predicted North American Datum 1983
move the projection lines 14 meters south and
25 meters west as shown by dashed corner ticks
Short dashed blue lines indicate elliptical bay outlines
visible on aerial photographs
There may be private inholdings within the boundaries of
the National or State reservations shown on this map



CONTOUR INTERVAL 2 METERS
NATIONAL GEODETIC VERTICAL DATUM OF 1929
CONTROL ELEVATIONS SHOWN TO THE NEAREST 0.1 METER
OTHER ELEVATIONS SHOWN TO THE NEAREST 0.5 METER
THIS MAP COMPLIES WITH NATIONAL MAP ACCURACY STANDARDS
FOR SALE BY U. S. GEOLOGICAL SURVEY, RESTON, VIRGINIA 22092
A FOLDER DESCRIBING TOPOGRAPHIC MAPS AND SYMBOLS IS AVAILABLE ON REQUEST



CONTOURS AND ELEVATIONS
IN METERS

ROAD CLASSIFICATION
Primary highway, hard surface
Secondary highway, hard surface
Light-duty road, hard or improved surface
Unimproved road
Interstate Route U. S. Route State Route

CURRIE, N. C.
NE 4 ACME 15' QUADRANGLE
34078-D1-TM-024
1983
DMA 5352 I NE—SERIES V842

RETURN TO:
USGS AND HISTORICAL MAP ARCHIVES