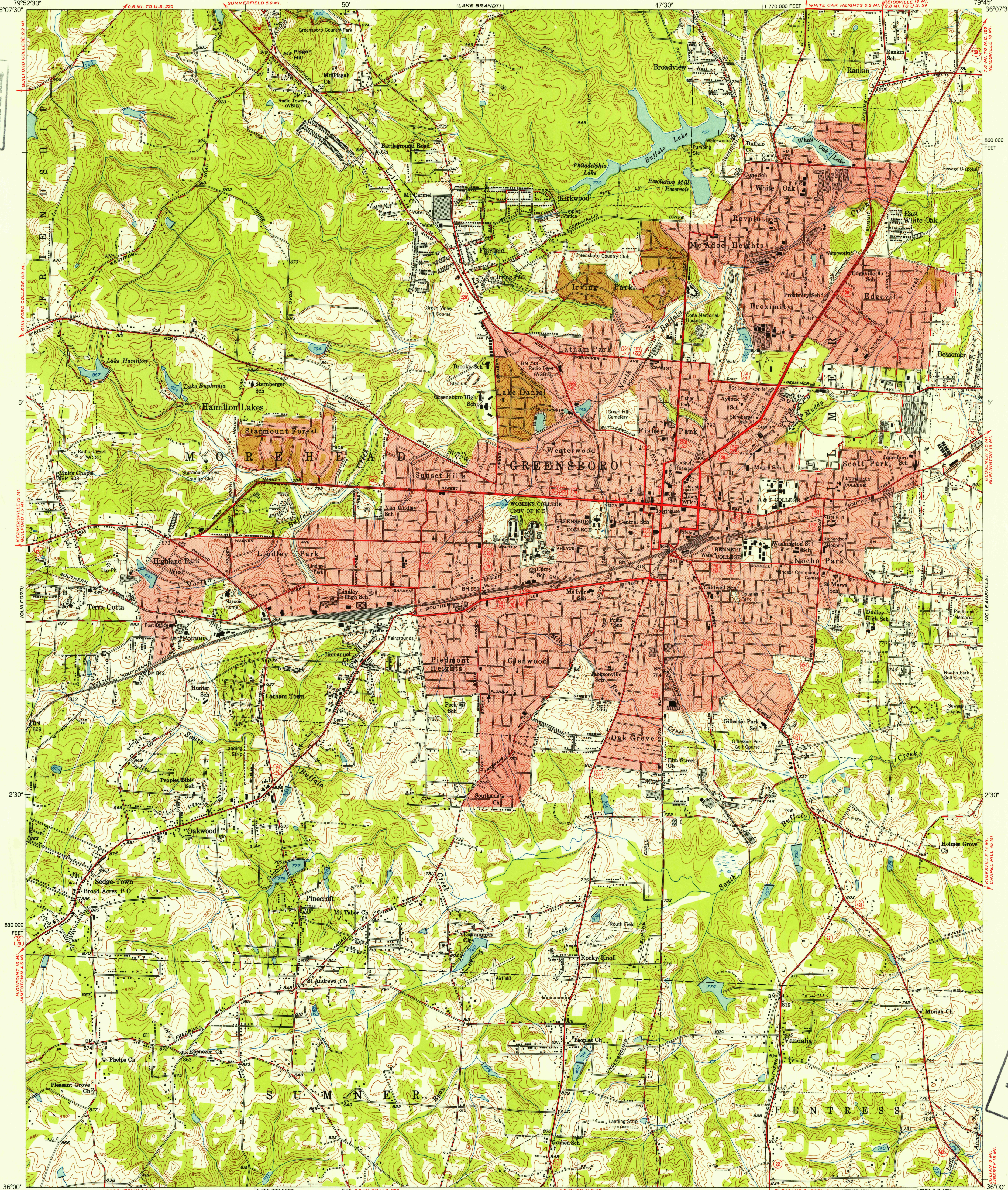


FILE COPY
Topographic and Historical

FILE COPY
Topographic and Historical



Mapped, edited, and published by the Geological Survey

Control by USGS, USCGS and North Carolina Geodetic Survey

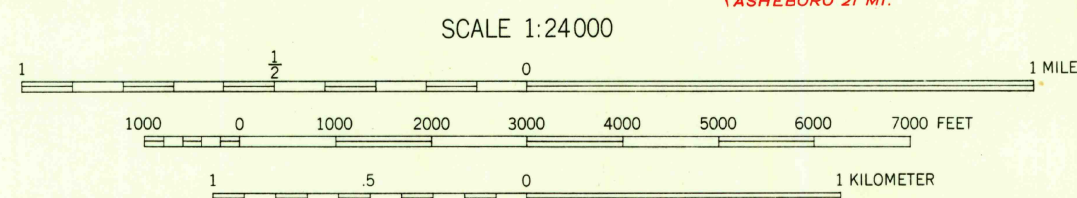
Culture and drainage in part compiled from aerial photographs taken 1948

Topography by plane-table surveys 1951

Polyconic projection, 1927 North American datum, 10,000-foot grid based on North Carolina coordinate system

Red tint indicates areas in which only landmark buildings are shown

TRUE NORTH
MAGNETIC NORTH
APPROXIMATE MEAN DECLINATION 1951



CONTOUR INTERVAL 10 FEET
DATUM IS MEAN SEA LEVEL

THIS MAP COMPLIES WITH NATIONAL MAP ACCURACY STANDARDS
FOR SALE BY U. S. GEOLOGICAL SURVEY, WASHINGTON 25, D. C.
A FOLDER DESCRIBING TOPOGRAPHIC MAPS AND SYMBOLS IS AVAILABLE ON REQUEST

USGS
Historical File
Topographic Division



ROAD CLASSIFICATION
Heavy-duty 4 LANE 6 LANE Light-duty
Medium-duty 4 LANE 6 LANE Unimproved dirt
U. S. Route State Route

GREENSBORO, N. C.
N3600-W7945/7.5

1951

FEB 19 1953