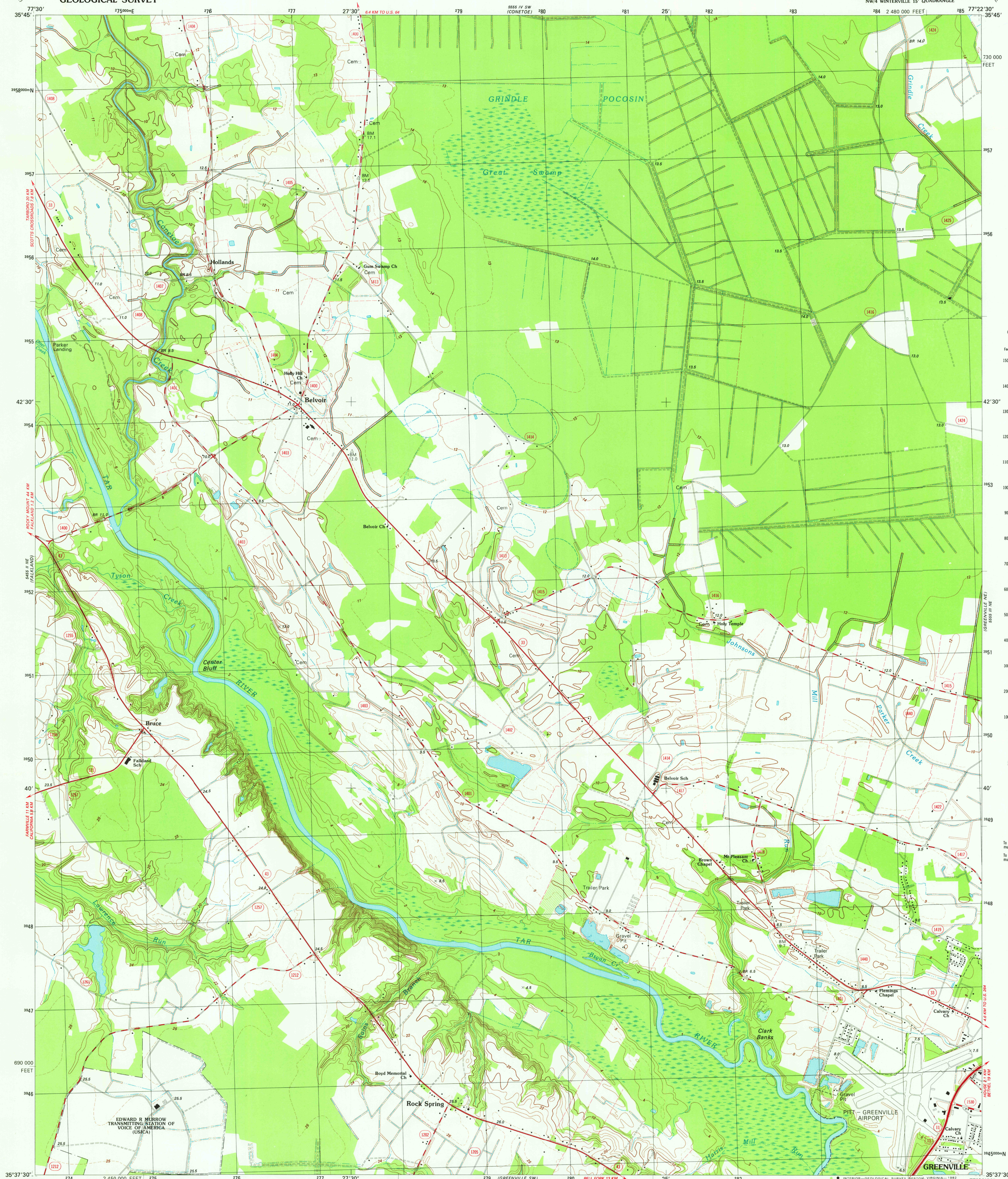


UNITED STATES
DEPARTMENT OF THE INTERIOR
GEOLOGICAL SURVEY

GREENVILLE NW QUADRANGLE
NORTH CAROLINA-PITT CO.
7.5 MINUTE SERIES (TOPOGRAPHIC)
NW/4 WINTERVILLE 15' QUADRANGLE



CONVERSION
SCALES

Feet Meters



Feet Meters

1 3048
2 6096
3 9144
4 12192
5 15240
6 18288
7 21336
8 24384
9 27432
10 30480

To convert feet to meters
multiply by 3048
To convert meters to feet
multiply by 3.2808

Mapped, edited, and published by the Geological Survey

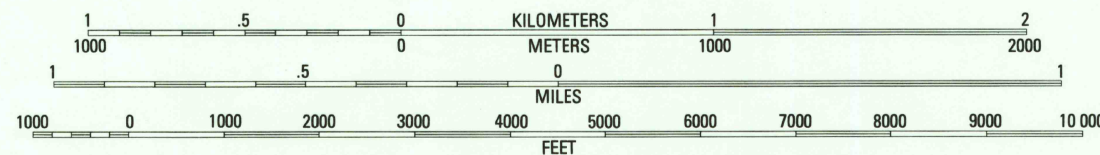
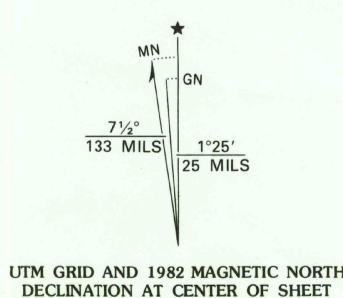
Control by USGS, NOS/NOAA, and North Carolina Geodetic Survey
Topography by photogrammetric methods from aerial photographs
taken 1977. Field checked 1978. Map edited 1982

Projection and 10,000-foot grid ticks: North Carolina coordinate
system (Lambert conformal conic)
1000-meter Universal Transverse Mercator grid, zone 18
1927 North American Datum

To place on the predicted North American Datum 1983
move the projection lines 12 meters south and
27 meters west as shown by dashed corner ticks

Short dashed blue lines indicate elliptical bay outlines
visible on aerial photographs
Fine red dashed lines indicate selected fence and field lines where
generally visible on aerial photographs

There may be private inholdings within the boundaries of
the National or State reservations shown on this map



CONTOUR INTERVAL 2 METERS
SUPPLEMENTARY CONTOUR INTERVAL 1 METER
DASHED SUPPLEMENTARY CONTOURS ARE APPROXIMATE
NATIONAL GEODETIC VERTICAL DATUM OF 1929
CONTROL ELEVATIONS SHOWN TO THE NEAREST 0.1 METER
OTHER ELEVATIONS SHOWN TO THE NEAREST 0.5 METER

THIS MAP COMPLIES WITH NATIONAL MAP ACCURACY STANDARDS
FOR SALE BY U.S. GEOLOGICAL SURVEY, RESTON, VIRGINIA 22092
A FOLDER DESCRIBING TOPOGRAPHIC MAPS AND SYMBOLS IS AVAILABLE ON REQUEST



QUADRANGLE LOCATION
CONTOURS AND ELEVATIONS
IN METERS

ROAD CLASSIFICATION

Primary highway, hard surface Light-duty road, hard or improved surface
Secondary highway, hard surface Unimproved road
Interstate Route U.S. Route State Route

GREENVILLE NW, N. C.
NW/4 WINTERVILLE 15' QUADRANGLE
N3537.5° W7722.5/7.5

1982

DMA 5555 111 NW-SERIES V842

AUG 1982

2100