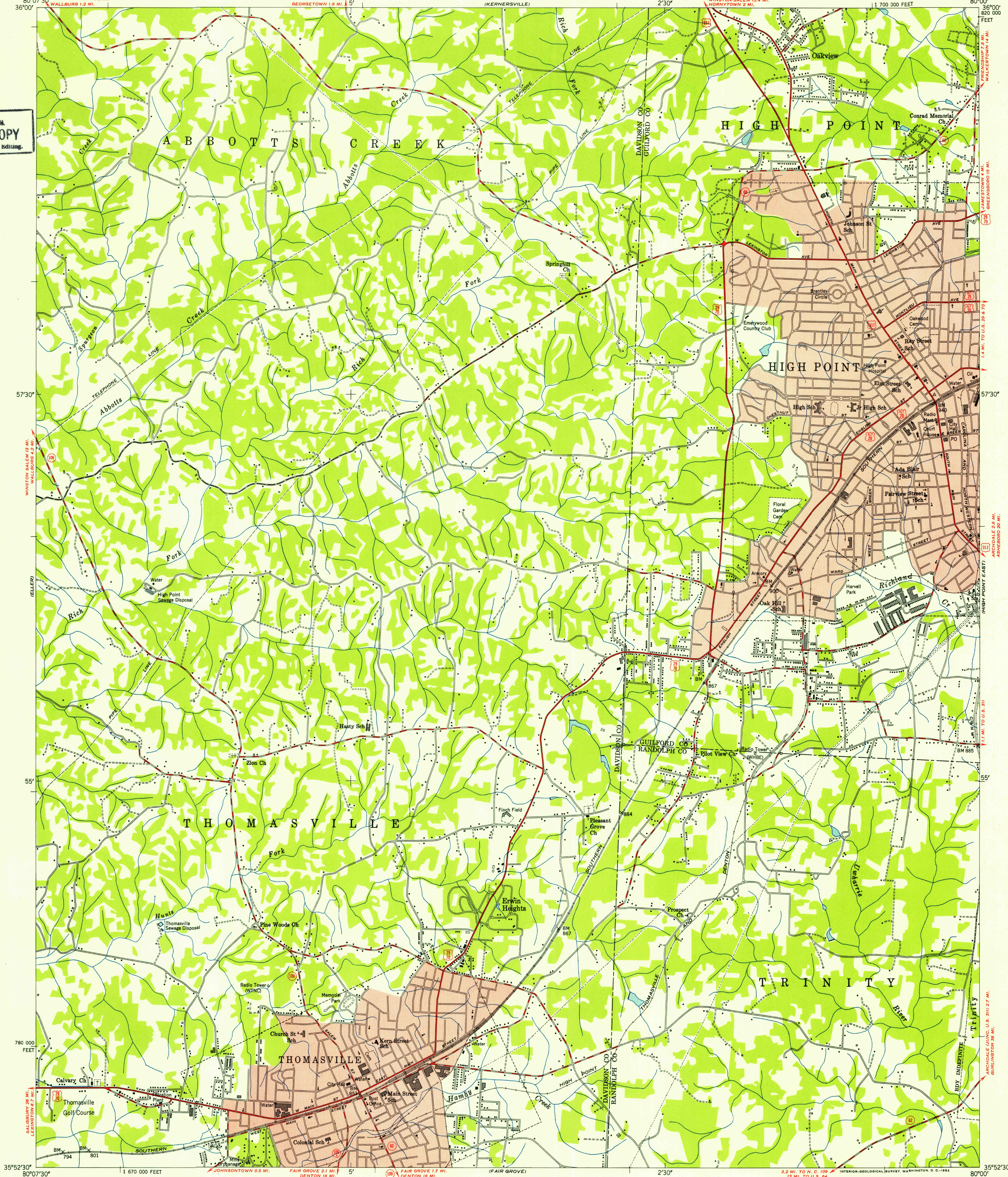
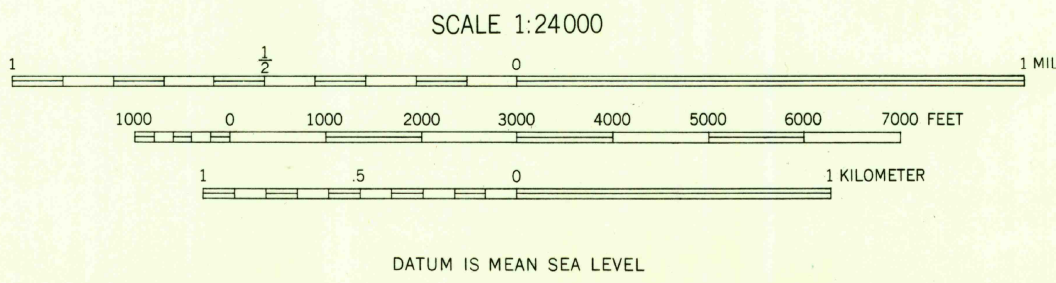


U. S. G. S.
FILE COPY
Inspection and Editing



Mapped, edited, and published by the Geological Survey
Control by USGS, USC&GS, USSCS, and
North Carolina Geodetic Survey
Compiled from aerial photographs by multiplex methods
Aerial photographs taken 1948, Field check 1949
Polyconic projection, 1927 North American datum
10,000-foot grid based on North Carolina coordinate system
Red tint indicates areas in which only
landmark buildings are shown

TRUE NORTH
MAGNETIC NORTH
APPROXIMATE MEAN
DECLINATION, 1949



THIS MAP COMPLIES WITH NATIONAL MAP ACCURACY STANDARDS
FOR SALE BY U. S. GEOLOGICAL SURVEY, WASHINGTON 25, D. C.
A FOLDER DESCRIBING TOPOGRAPHIC MAPS AND SYMBOLS IS AVAILABLE ON REQUEST

USGS
Historical File
Topographic Division
Inspection and Editing

ROAD CLASSIFICATION
Heavy-duty ——— 4 LANE 16 LANE Light-duty ———
Medium-duty ——— 4 LANE 16 LANE Unimproved dirt ———
U. S. Route State Route

HIGH POINT WEST, N. C.
N3552.5-W8000/7.5
1949