

(McDaniel Bald)
84°00'
35°07'30"

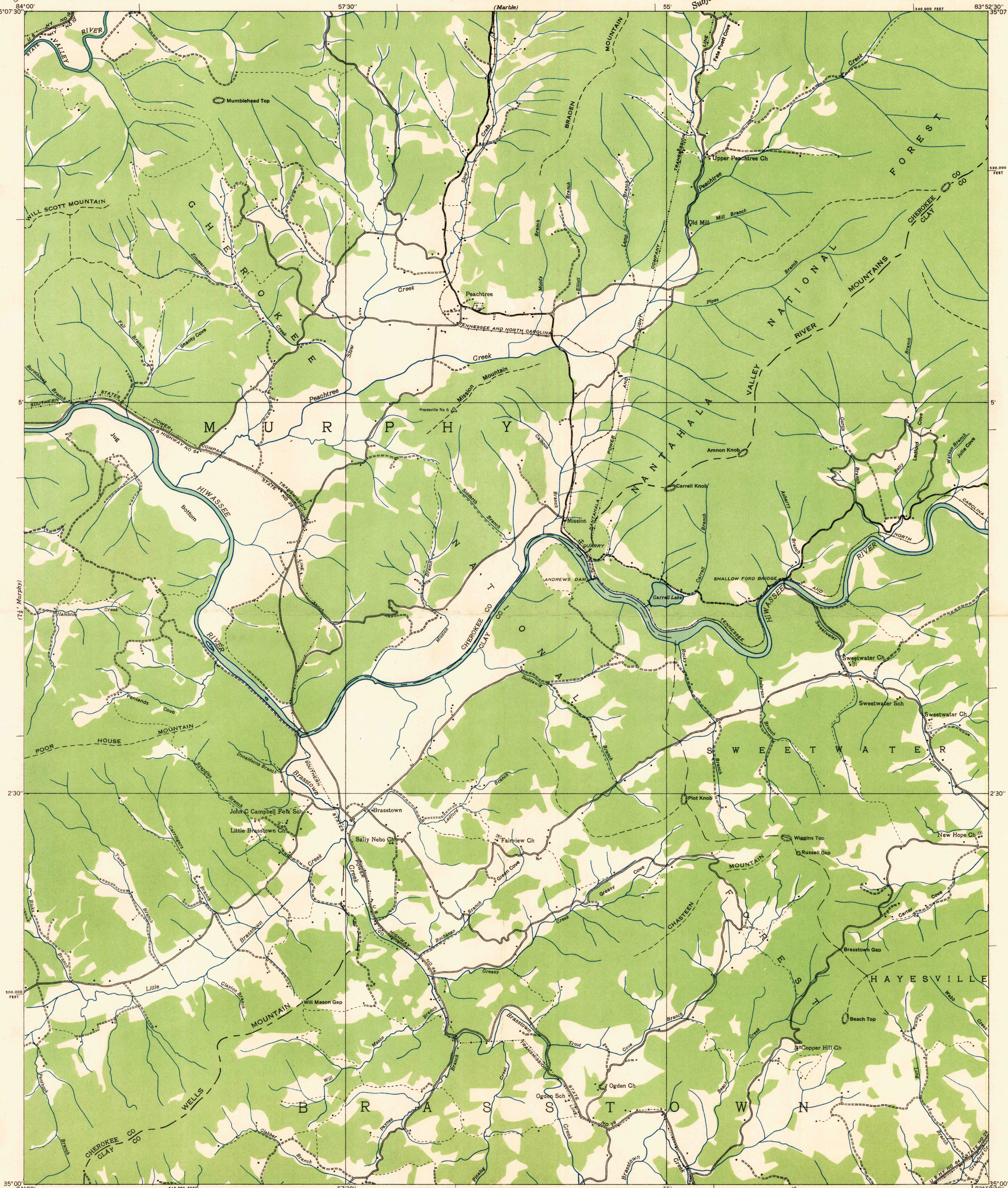
DEPARTMENT OF THE INTERIOR
U. S. GEOLOGICAL SURVEY

TENNESSEE VALLEY AUTHORITY
ARTHUR E. MORGAN, CHAIRMAN AND CHIEF ENGINEER
CARL A. BOCK, ASSISTANT CHIEF ENGINEER

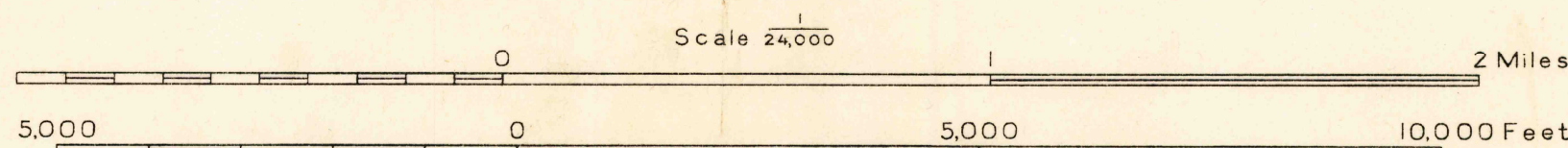
Advance sheet
Subject to correction

NORTH CAROLINA
PEACHTREE QUADRANGLE
150-SW

83°52'30"
35°07'30"



Albert Pike, Division Engineer
Compiled by U. S. Geological Survey from aerial photographs
Control by U. S. Geological Survey
Field examination in 1935



Datum is mean sea level

TRUE NORTH
MAGNETIC NORTH
APPROXIMATE MEAN
DECLINATION, 1985

Polyconic projection. 1927 North American datum
10,000 foot grid based on North Carolina
rectangular coordinate system

Ridge line ---
Trail ---

PEACHTREE, N. C.
150-SW

U.S.G.S.
FILE COPY
TOPOGRAPHIC DIVISION

USGS
Historical File
Topographic Division