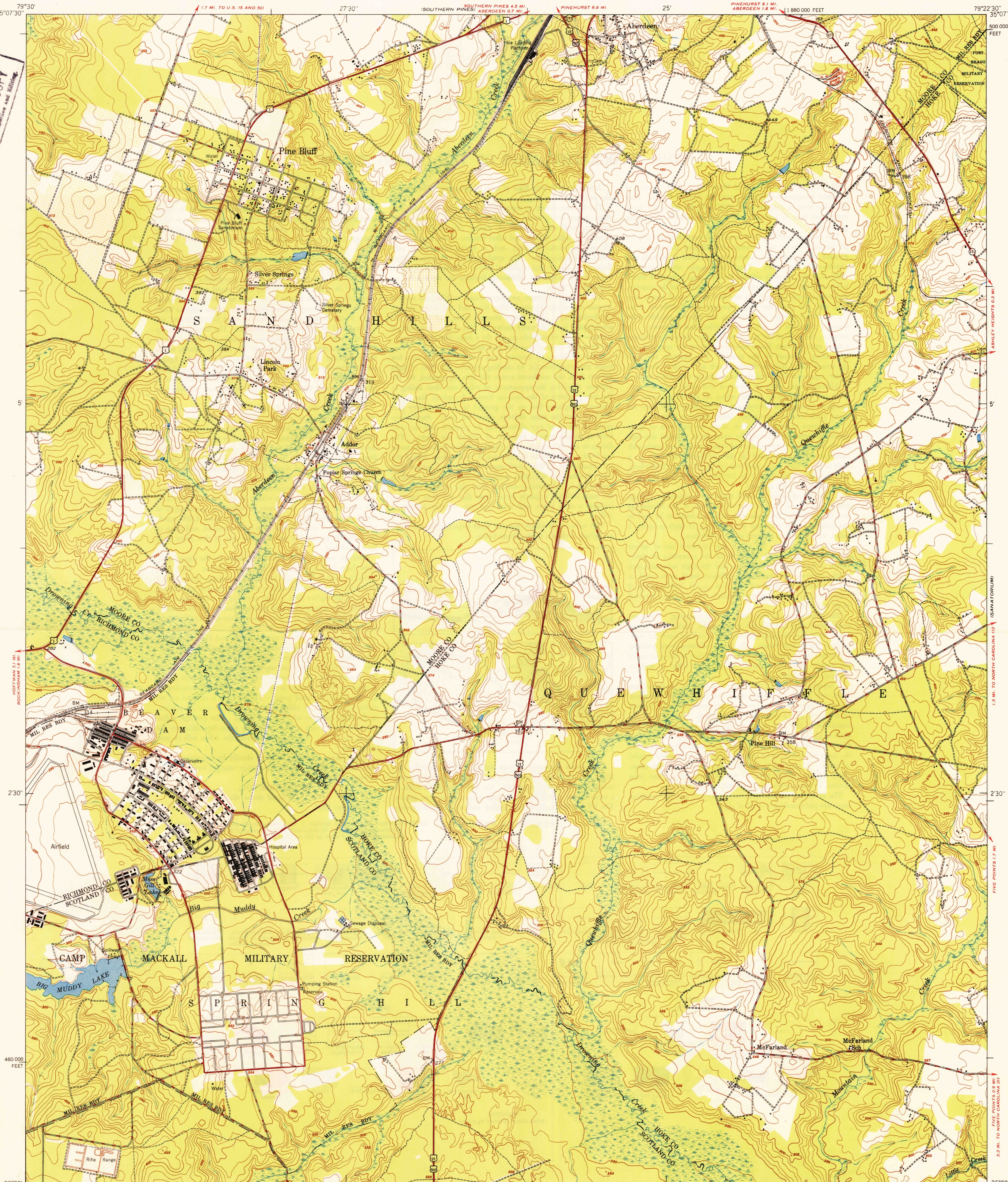
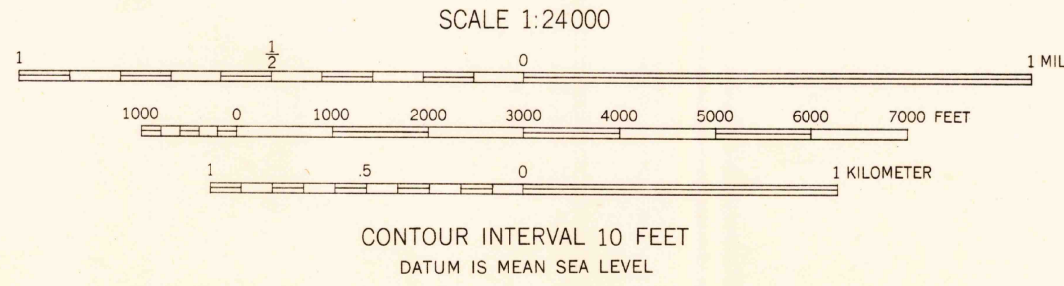


U.S.G.S.
FILE COPY
Inspection and Editing



Maped by the Army Map Service
Edited and published for civil use by the Geological Survey
Control by USGS, USC&GS, and CE
Topography from aerial photographs by multiplex methods
Aerial photographs taken 1946-1947. Field check 1948
Polyconic projection, 1927 North American datum
10,000-foot grid based on North Carolina coordinate system.
Unchecked elevations shown in brown

25°
TRUE NORTH
MAGNETIC NORTH
APPROXIMATE MEAN
DECLINATION, 1948



THIS MAP COMPLIES WITH NATIONAL MAP ACCURACY STANDARDS
FOR SALE BY U. S. GEOLOGICAL SURVEY, WASHINGTON 25, D. C.

USGS
Historical File
Topographic Division

HISTORICAL

U.S.G.S.
FILE COPY
Inspection and Editing

ROAD CLASSIFICATION
HARD-SURFACE ALL WEATHER ROADS DRY WEATHER ROADS
Heavy-duty 1 LANE 16 LANE Improved dirt
Medium-duty 1 LANE 16 LANE Unimproved dirt
Loose-surface, graded, or narrow hard-surface
U. S. Route State Route

PINE BLUFF, N. C.
N3500-W7922.5/7.5

EDITION OF 1950