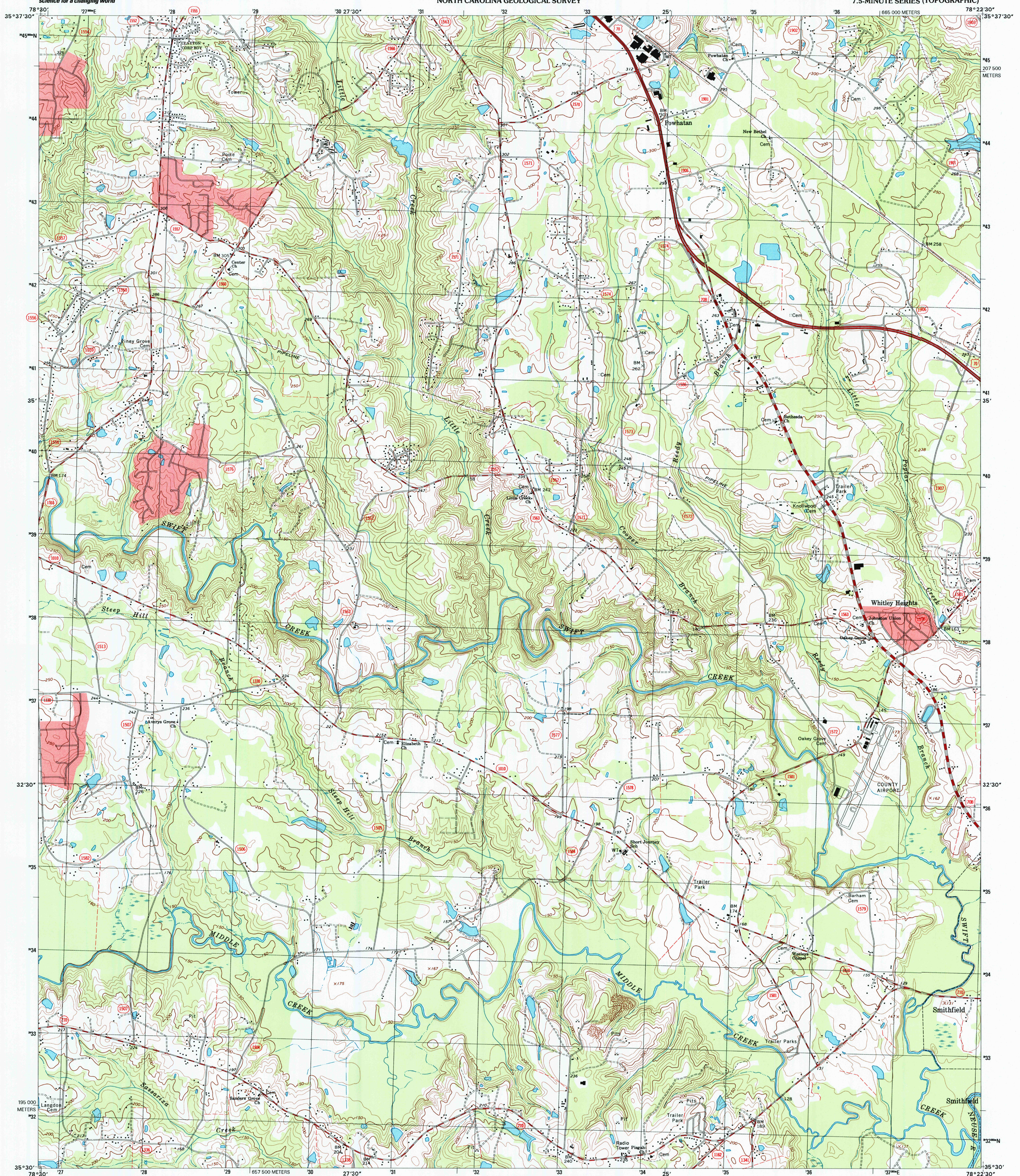




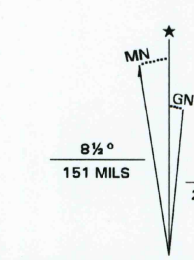
U.S. DEPARTMENT OF THE INTERIOR
U.S. GEOLOGICAL SURVEY

STATE OF NORTH CAROLINA
DEPARTMENT OF ENVIRONMENT AND NATURAL RESOURCES
DIVISION OF LAND RESOURCES
NORTH CAROLINA GEOLOGICAL SURVEY

POWHATAN QUADRANGLE
NORTH CAROLINA-JOHNSON CO.
7.5-MINUTE SERIES (TOPOGRAPHIC)



Produced by the United States Geological Survey
in cooperation with North Carolina Department
of Environment and Natural Resources
Topography compiled 1962. Planimetry derived from imagery
taken 1953 and other sources. Survey control current as of 1964
North American Datum of 1983 (NAD 83). Projection and
1 000-meter grid: Universal Transverse Mercator, zone 17
2 500-meter ticks: North Carolina Coordinate System of 1983
North American Datum of 1927 (NAD 27) is shown by dashed
corner ticks. The values of the shift between NAD 83 and
NAD 27 for 7.5-minute intersections are obtainable from
National Geographic Survey NADCON software
Landmark buildings verified 1964

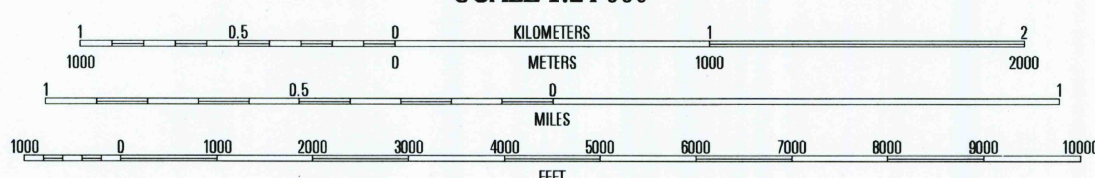


RECEIVED

APR 30 1999

USGS NMD

SCALE 1:24 000



CONTOUR INTERVAL 10 FEET
NATIONAL GEODETIC VERTICAL DATUM OF 1929
TO CONVERT FROM FEET TO METERS, MULTIPLY BY 0.3048

THIS MAP COMPLIES WITH NATIONAL MAP ACCURACY STANDARDS
FOR SALE BY U.S. GEOLOGICAL SURVEY, P.O. BOX 25286, DENVER, COLORADO 80225
A FOLDER DESCRIBING TOPOGRAPHIC MAPS AND SYMBOLS IS AVAILABLE ON REQUEST



QUADRANGLE LOCATION

1	2	3
4	5	6
7	8	9

ADJOINING 7.5' QUADRANGLE NAMES

ROAD CLASSIFICATION

Primary highway
hard surface
Secondary highway
hard surface
Light-duty road, hard or
improved surface
Unimproved road

Interstate Route
U.S. Route
State Route

POWHATAN, NC

1993

NIMA 5355 III SW-SERIES V842

