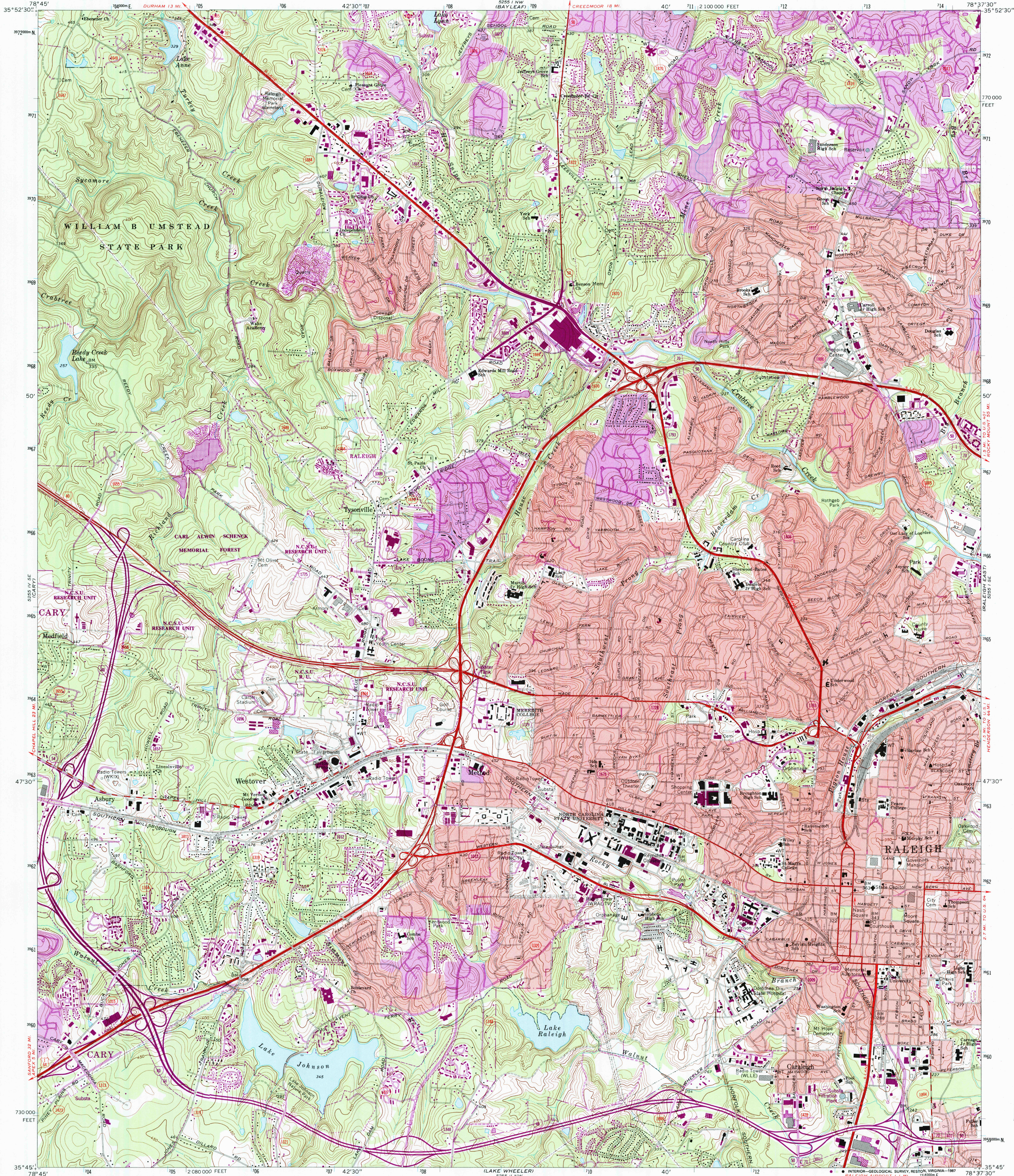


UNITED STATES
DEPARTMENT OF THE INTERIOR
GEOLOGICAL SURVEY

RALEIGH WEST QUADRANGLE
NORTH CAROLINA—WAKE CO.
7.5 MINUTE SERIES (TOPOGRAPHIC)
SW/4 RALEIGH 15' QUADRANGLE



Maped, edited, and published by the Geological Survey

Control by USGS, NOS/NOAA, and North Carolina Geodetic Survey

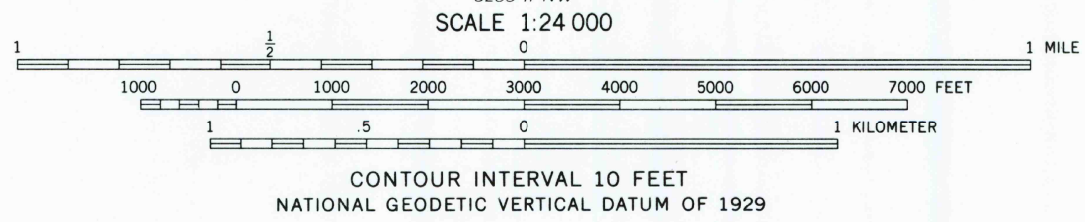
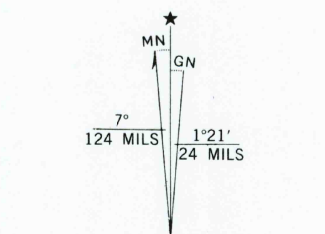
Topography by photogrammetric methods from aerial photographs taken 1965 and 1968. Field checked 1968

Polyconic projection. 10,000-foot grid ticks based on North Carolina coordinate system. 1000-meter Universal Transverse Mercator grid ticks, zone 17, shown in blue. 1927 North American Datum

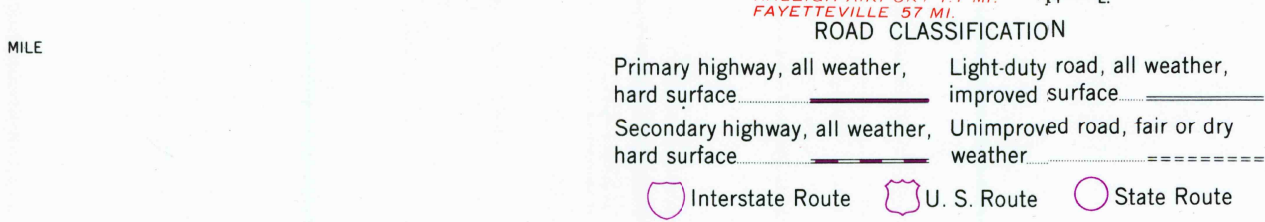
To place on the predicted North American Datum 1983 move the projection lines 12 meters south and 23 meters west as shown by dashed corner ticks

Red tint indicates areas in which only landmark buildings are shown

There may be private inholdings within the boundaries of the National or State reservations shown on this map



THIS MAP COMPLIES WITH NATIONAL MAP ACCURACY STANDARDS
FOR SALE BY U.S. GEOLOGICAL SURVEY
DENVER, COLORADO 80225 OR RESTON, VIRGINIA 22092
A FOLDER DESCRIBING TOPOGRAPHIC MAPS AND SYMBOLS IS AVAILABLE ON REQUEST



Revisions shown in purple and woodland compiled in cooperation with State of North Carolina agencies from aerial photographs taken 1984 and other sources. This information not field checked. Map edited 1987

Purple tint indicates extension of urban areas

1968
PHOTOREVISED 1987
DMA 5255 I SW—SERIES V842

RALEIGH WEST, N. C.
SW/4 RALEIGH 15' QUADRANGLE
35078-G6-TF-024

RETURN TO:
USGS AND HISTORICAL MAP ARCHIVES