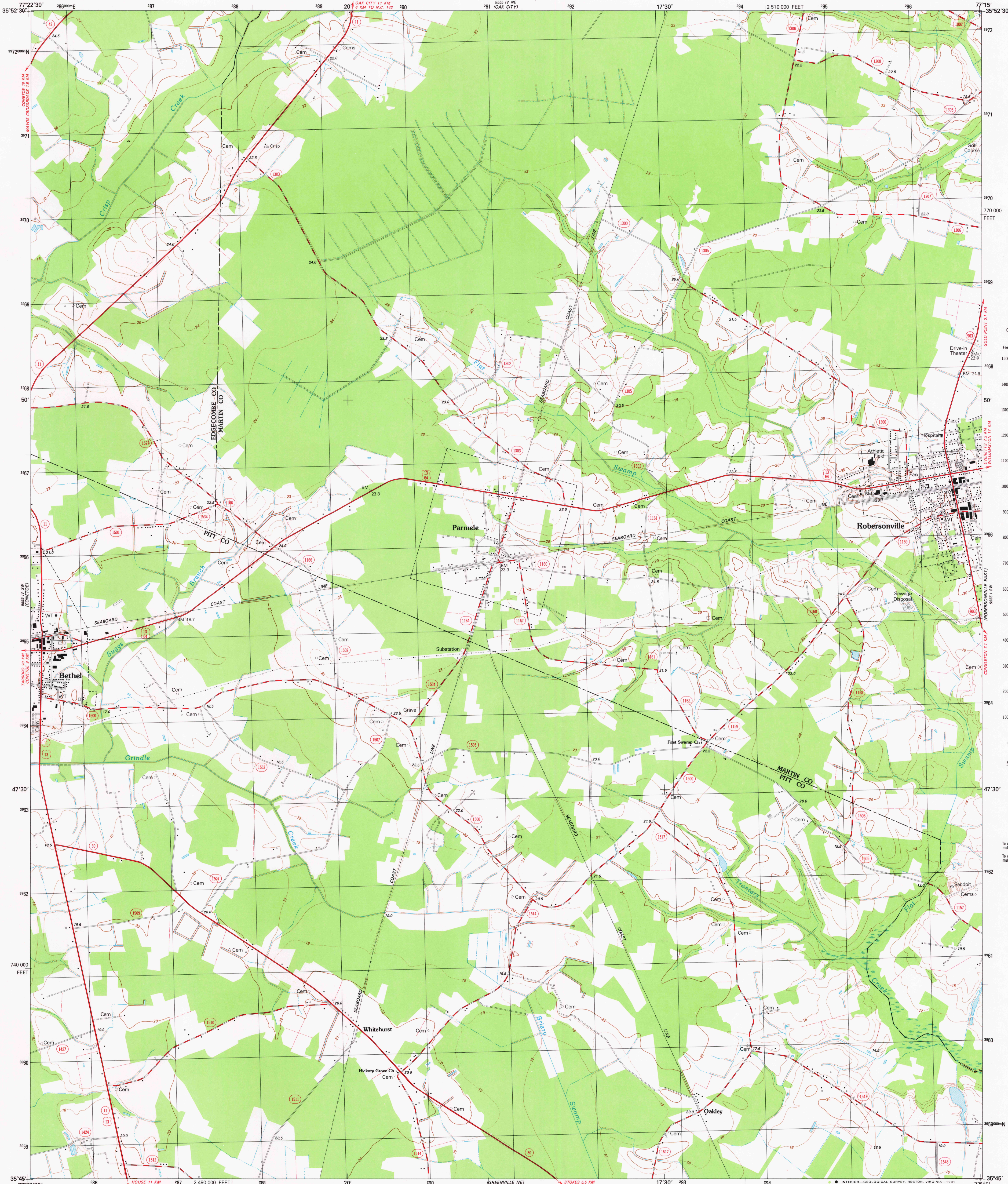


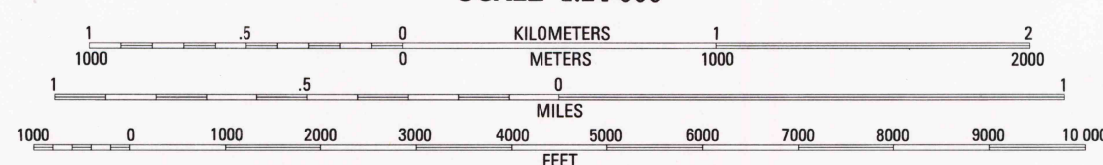
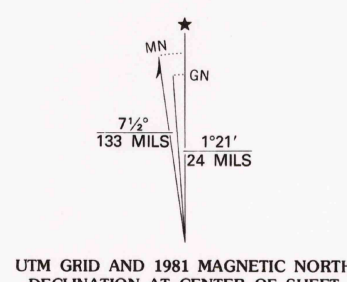
UNITED STATES
DEPARTMENT OF THE INTERIOR
GEOLOGICAL SURVEY

ROBERSONVILLE WEST QUADRANGLE
NORTH CAROLINA
7.5 MINUTE SERIES (TOPOGRAPHIC)
SE/4 PARMELE 15' QUADRANGLE



To convert feet to meters
multiply by .3048
To convert meters to feet
multiply by 3.2808

Mapped, edited, and published by the Geological Survey
Control by USGS, NOS/NOAA, and USCE
Topography by photogrammetric methods from aerial photographs
taken 1977. Field checked 1978. Map edited 1981
Projection and 10,000-foot grid ticks: North Carolina coordinate
system (Lambert conformal conic)
1000-meter Universal Transverse Mercator grid, zone 18
1927 North American Datum
To place on the predicted North American Datum 1983
move the projection lines 12 meters south and
27 meters west as shown by dashed corner ticks
Fine red dashed lines indicate selected fence and field lines where
generally visible on aerial photographs. This information is unchecked



CONTOUR INTERVAL 2 METERS
SUPPLEMENTARY CONTOUR INTERVAL 1 METER
DASHED SUPPLEMENTARY CONTOURS ARE APPROXIMATE
NATIONAL GEODETIC VERTICAL DATUM OF 1929
CONTROL ELEVATIONS SHOWN TO THE NEAREST 0.1 METER
OTHER ELEVATIONS SHOWN TO THE NEAREST 0.5 METER

THIS MAP COMPLIES WITH NATIONAL MAP ACCURACY STANDARDS
FOR SALE BY U. S. GEOLOGICAL SURVEY, RESTON, VIRGINIA 22092
A FOLDER DESCRIBING TOPOGRAPHIC MAPS AND SYMBOLS IS AVAILABLE ON REQUEST



CONTOURS AND ELEVATIONS
IN METERS

ROAD CLASSIFICATION
Primary highway, hard surface
Secondary highway, hard surface
Light-duty road, hard or improved surface
Unimproved road
Interstate Route U. S. Route State Route

ROBERSONVILLE WEST, N. C.
SE/4 PARMELE 15' QUADRANGLE
N3545-W7715/7.5
1981
DMA 5555 IV SE-SERIES V842

DEC 4 1981