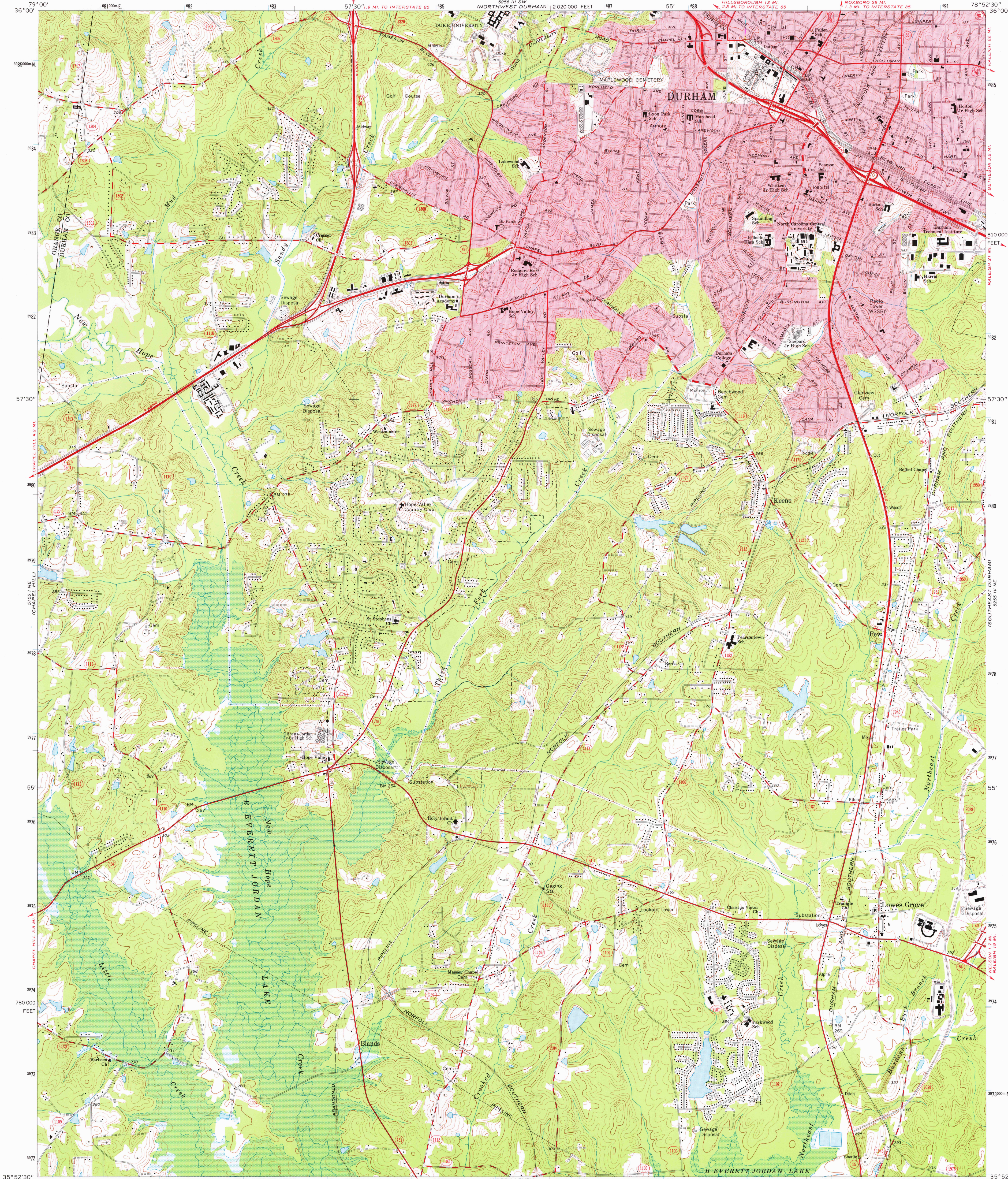


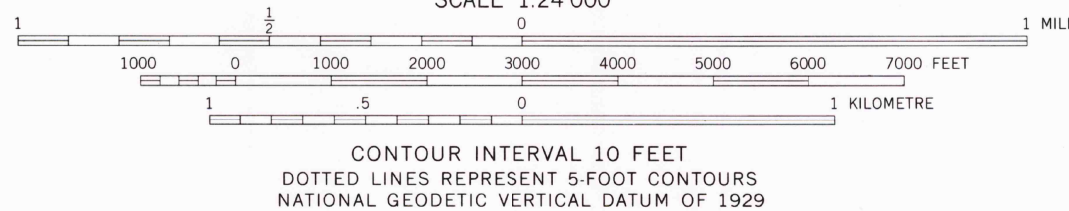
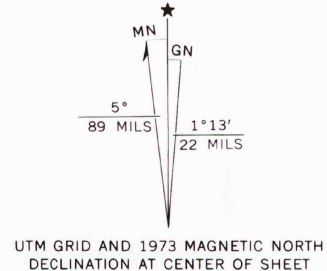
UNITED STATES
DEPARTMENT OF THE INTERIOR
GEOLOGICAL SURVEY

STATE OF NORTH CAROLINA
DEPARTMENT OF NATURAL AND ECONOMIC RESOURCES
RALEIGH, NORTH CAROLINA

SOUTHWEST DURHAM QUADRANGLE
NORTH CAROLINA
7.5 MINUTE SERIES (TOPOGRAPHIC)



Mapped, edited, and published by the Geological Survey
Control by USGS, NOS/NOAA, and North Carolina Geodetic Survey
Topography by photogrammetric methods from aerial photographs taken 1972. Field checked 1973
Projection and 10,000-foot grid ticks: North Carolina coordinate system (Lambert conformal conic)
1000-metre Universal Transverse Mercator grid ticks, zone 17, shown in blue. 1927 North American datum
Red tint indicates area in which only landmark buildings are shown
Areas covered by dashed light-blue pattern are subject to controlled inundation



THIS MAP COMPLIES WITH NATIONAL MAP ACCURACY STANDARDS
FOR SALE BY U. S. GEOLOGICAL SURVEY, RESTON, VIRGINIA 22092
A FOLDER DESCRIBING TOPOGRAPHIC MAPS AND SYMBOLS IS AVAILABLE ON REQUEST



ROAD CLASSIFICATION
Primary highway, hard surface ——— Light-duty road, hard or improved surface
Secondary highway, hard surface ——— Unimproved road ———
Interstate Route ——— U. S. Route ——— State Route ———

SOUTHWEST DURHAM, N. C.
NW/4 DURHAM SOUTH 15' QUADRANGLE
N3552.5—W7852.5/7.5

1973
AMS 9255 IV NW-SERIES V842

APR 13 1977
3250