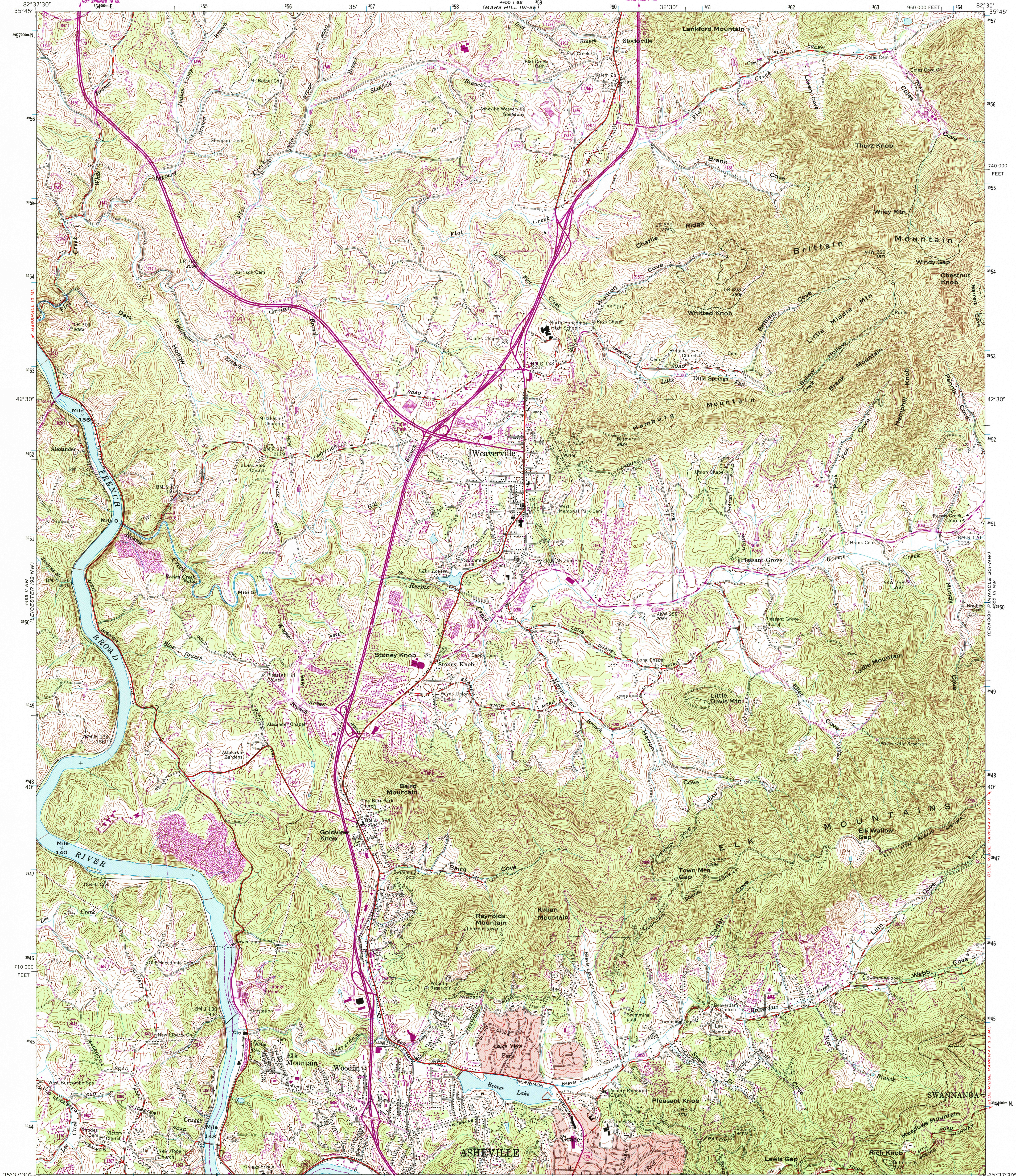


UNITED STATES  
DEPARTMENT OF THE INTERIOR  
GEOLOGICAL SURVEY

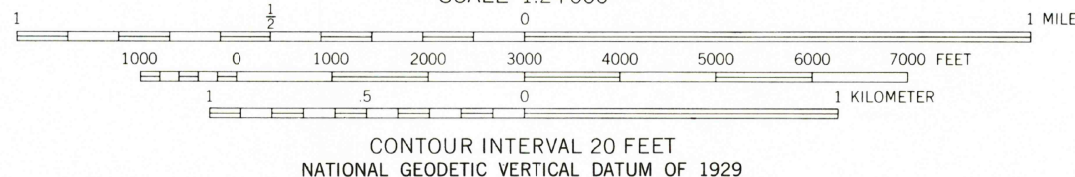
UNITED STATES  
TENNESSEE VALLEY AUTHORITY  
MAPS AND SURVEYS DEPARTMENT

WEAVERVILLE QUADRANGLE  
NORTH CAROLINA-BUNCOMBE CO.  
7.5 MINUTE SERIES (TOPOGRAPHIC) 192-NE

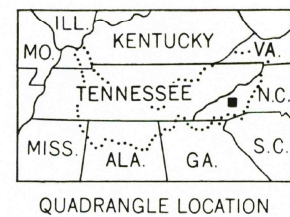


Mapped and edited by Tennessee Valley Authority  
Published by the Geological Survey  
Control by NOS/NOAA, USGS and TVA  
Revised by TVA in 1962 by photogrammetric methods using  
aerial photographs taken 1961 and by reference to TVA-USGS  
quadrangle dated 1942. Map field checked by TVA, 1962  
Polyconic projection. 10,000-foot grid ticks based on  
North Carolina coordinate system  
1000-meter Universal Transverse Mercator grid ticks,  
zone 17, shown in blue  
1927 North American Datum (NAD 27)  
North American Datum of 1983 (NAD 83) is shown by dashed  
corner ticks. The value of the shift between NAD 27 and  
NAD 83 for 7.5-minute intersections is given in  
USGS bulletin 1875

Fine red dashed lines indicate selected fence and field lines  
visible on aerial photographs. This information is unchecked  
Red tint indicates areas in which only landmark buildings are  
shown



THIS MAP COMPLIES WITH NATIONAL MAP ACCURACY STANDARDS  
FOR SALE BY U.S. GEOLOGICAL SURVEY, DENVER, COLORADO 80225, OR RESTON, VIRGINIA 22092  
TENNESSEE DEPARTMENT OF CONSERVATION, DIVISION OF GEOLOGY, NASHVILLE, TENN. 37243  
AND U.S. TENNESSEE VALLEY AUTHORITY, CHATTANOOGA, TENN. 37402  
A FOLDER DESCRIBING TOPOGRAPHIC MAPS AND SYMBOLS IS AVAILABLE ON REQUEST



Revisions shown in purple and woodland compiled by the  
Geological Survey in cooperation with State of North Carolina  
agencies from aerial photographs taken 1990 and other sources  
Contours not revised. This information not field checked  
Map edited 1993

ROAD CLASSIFICATION  
Primary highway, hard surface  
Secondary highway, hard surface  
Light-duty road, hard or improved surface  
Unimproved road  
Interstate Route  
U. S. Route  
State Route

WEAVERVILLE, N. C.  
35082-F5-TF-024  
1962  
PHOTOREVISED 1993  
DMA 4455 II NE-SERIES V842

