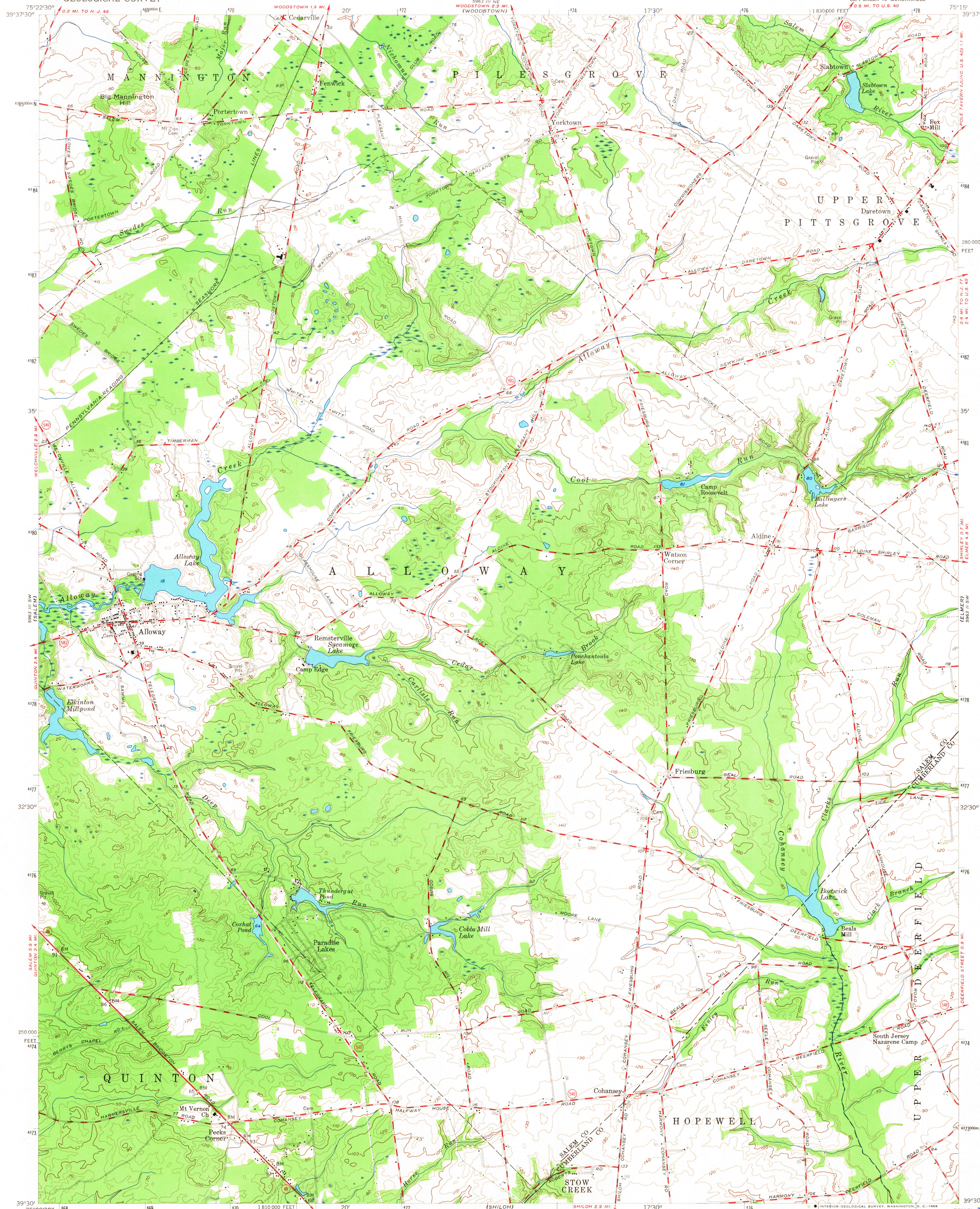
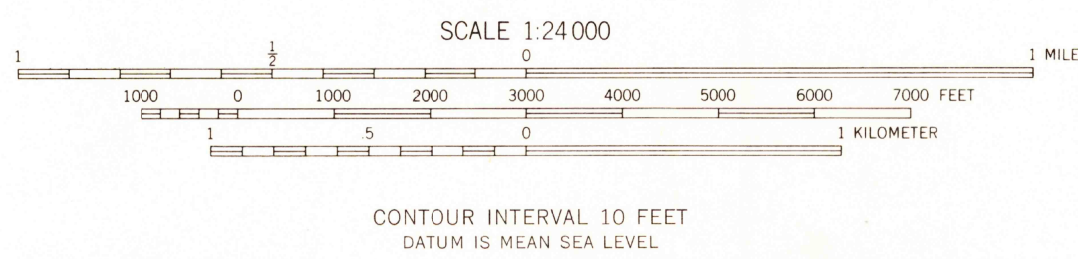
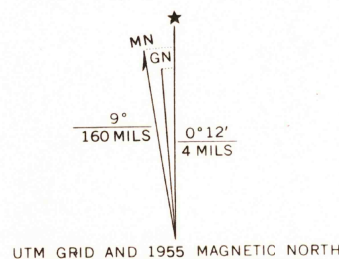


UNITED STATES
DEPARTMENT OF THE INTERIOR
GEOLOGICAL SURVEY

ALLOWAY QUADRANGLE
NEW JERSEY
7.5 MINUTE SERIES (TOPOGRAPHIC)
SE/4 SALEM 15' QUADRANGLE



Mapped, edited, and published by the Geological Survey
Control by USGS and New Jersey Geodetic Survey
Topography from aerial photographs by Kelsch plotter
Aerial photographs taken 1952. Field check 1955
Polyconic projection, 1927 North American datum
10,000-foot grid based on New Jersey coordinate system
1000-meter Universal Transverse Mercator grid ticks,
zone 18, shown in blue



ROAD CLASSIFICATION
Heavy-duty ——— Light-duty ———
Medium-duty ——— Unimproved dirt ———
U.S. Route ——— State Route ———



U.S.G.S.
FILE COPY
TOPOGRAPHIC DIVISION

ALLOWAY, N. J.
SE/4 SALEM 15' QUADRANGLE
N 3930-W 7515/7.5

1955

AMS 5963 III SE-SERIES V822

USGS
Historical File
Topographic Division

JUN 21 1968