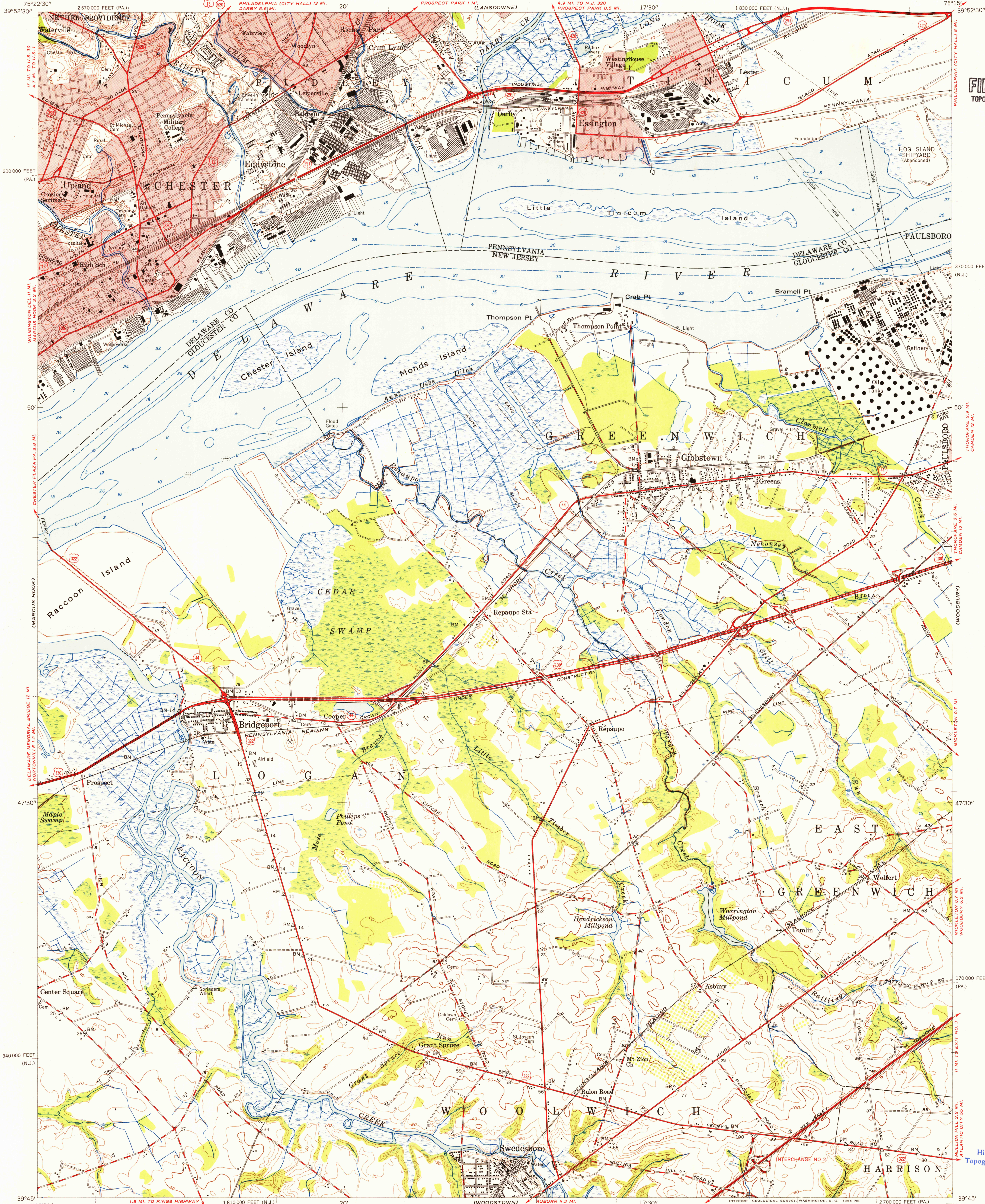


UNITED STATES  
DEPARTMENT OF THE INTERIOR  
GEOLOGICAL SURVEY

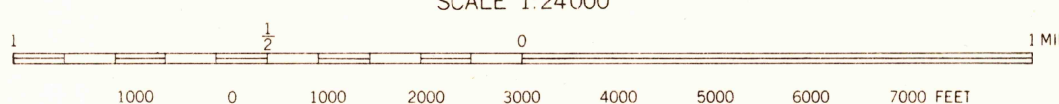
BRIDGEPORT QUADRANGLE  
NEW JERSEY-PENNSYLVANIA  
7.5 MINUTE SERIES (TOPOGRAPHIC)  
SE/4 CHESTER 15' QUADRANGLE

U.S.G.S.  
FILE COPY  
TOPOGRAPHIC DIVISION



Mapped, edited, and published by the Geological Survey  
Control by USGS, USC&GS, USCE, and New Jersey Geodetic Survey  
Topography by plane-table surveys 1939-1940. Revised 1953  
Hydrography from USC&GS chart 295 dated 1943  
Polyconic projection. 1927 North American datum  
10,000-foot grids based on New Jersey coordinate system,  
and Pennsylvania coordinate system, east zone  
Red tint indicates areas in which only  
landmark buildings are shown

APPROXIMATE MEAN  
DECLINATION, 1953



CONTOUR INTERVAL 10 FEET  
DATUM IS MEAN SEA LEVEL  
DEPTH CURVES AND SOUNDINGS IN FEET-DATUM IS MEAN LOW WATER  
SHORELINE SHOWN REPRESENTS THE APPROXIMATE LINE OF MEAN HIGH WATER  
THE MEAN RANGE OF TIDE IS 5.4 FEET  
THIS MAP COMPLIES WITH NATIONAL MAP ACCURACY STANDARDS  
FOR SALE BY U. S. GEOLOGICAL SURVEY, WASHINGTON 25, D. C.  
A FOLDER DESCRIBING TOPOGRAPHIC MAPS AND SYMBOLS IS AVAILABLE ON REQUEST

ROAD CLASSIFICATION  
Heavy-duty ——— Light-duty ———  
Medium-duty ——— Unimproved dirt ———  
U. S. Route ——— State Route ———



U.S.G.S.  
FILE COPY  
TOPOGRAPHIC DIVISION

BRIDGEPORT, N. J.-PA.  
SE/4 CHESTER 15' QUADRANGLE  
N 3945-W 7515/7.5  
1953

USGS  
Historical File  
Topographic Division

USGS  
Historical File  
Topographic Division

DEC 20 1955

4150