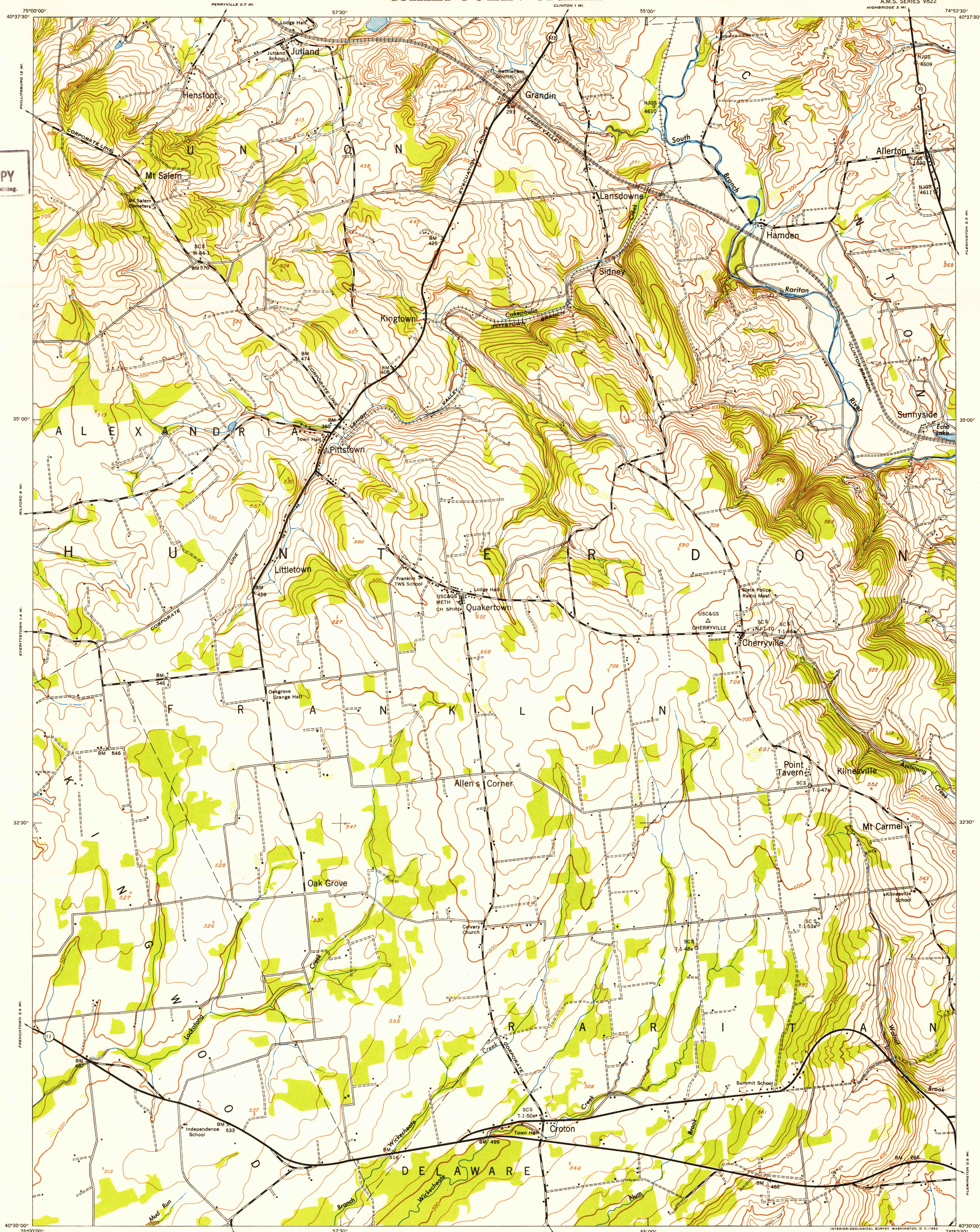
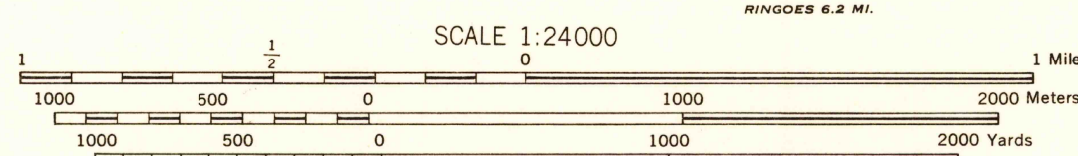
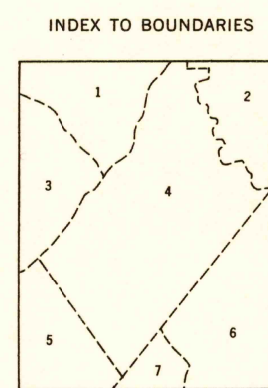


U.S.G.S.
FILE COPY
Inspection and MappingA.M.S. V822
First Edition (AMS 1), 1942; (AMS 2), 1946.

Prepared under the direction of the Chief of Engineers by the Army Map Service (AM), U. S. Army, Washington, D. C. Copied in 1946 from New Jersey, 1:31,680, AMS, Sheet 6065 III SW, 1942. Original map compiled from aerial photographs by stereophotogrammetric methods. Horizontal and vertical control by USC&GS. Scale changed and marginal data revised, 1946. Aerial photography by Army Map Service, 1942. This map complies with the national standard map accuracy requirements.

LEGEND	
ROAD DATA 1942	
Hard surface, heavy duty road, more than two lanes wide	Loose surface, graded, dry-weather road
Hard surface, heavy duty road, two lanes wide; Federal route marker	Trail; Dirt road
Secondary, hard surface, all-weather road, two lanes wide; State route marker	Railroad in street; Carline in street
RAILROADS	UNDER CONSTRUCTION
Standard gauge	Single track
Narrow gauge	Double track
Single track carline	ABANDONED
Double track carline	Single track
	Double track
	Intermittent lake
	Intermittent stream
	Dam
	Rapids; Falls
	Large rapids and falls
	Swamp, marsh
	Rocks awash at low tide
	Wharf, pier
	Man-made shoreline

CONTOUR INTERVAL 20 FEET
DATUM IS MEAN SEA LEVEL
POLYCONIC PROJECTION
1927 NORTH AMERICAN DATUMREPRINTED FROM MILITARY EDITION FOR CIVIL USE
FOR SALE BY U. S. GEOLOGICAL SURVEY, WASHINGTON 25, D. C.10°
TRUE NORTH
APPROXIMATE MEAN
DECLINATION, 1949

INDEX TO ADJOINING SHEETS	
Sheet 6065 III SW	Sheet 6065 III SW
Sheet 6065 III SW	Sheet 6065 III SW
Sheet 6065 III SW	Sheet 6065 III SW
Sheet 6065 III SW	Sheet 6065 III SW
Sheet 6065 III SW	Sheet 6065 III SW
Sheet 6065 III SW	Sheet 6065 III SW
Sheet 6065 III SW	Sheet 6065 III SW

CAKEPOULIN CREEK, NEW JERSEY
HUNTERDON COUNTY
N4030-W7452.5/7.5USGS
Historical File
Topographic DivisionUSGS
Historical File
Topographic DivisionU.S.G.S.
FILE COPY
Inspection and Mapping

SEP 12 1982

2080