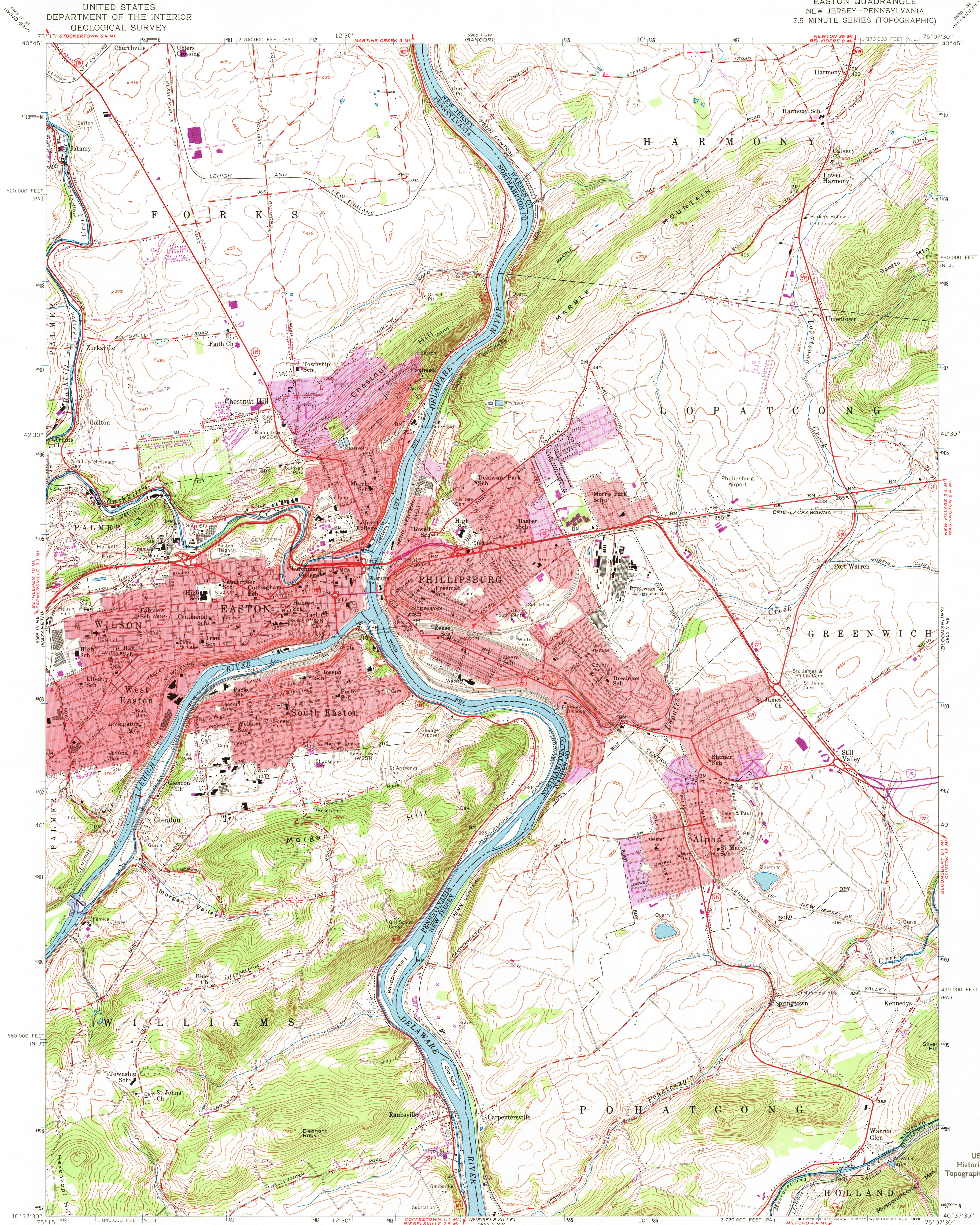


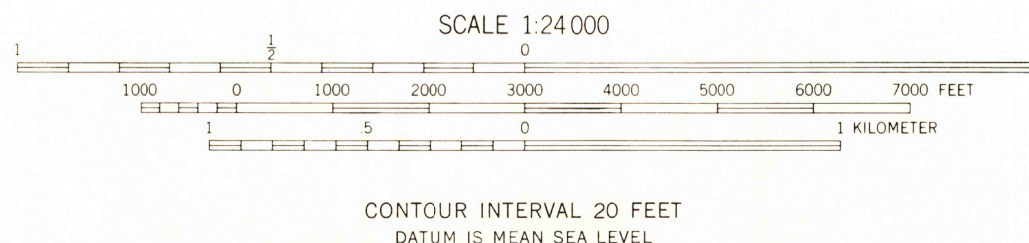
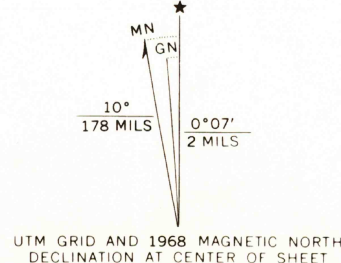
UNITED STATES
DEPARTMENT OF THE INTERIOR
GEOLOGICAL SURVEY

EASTON QUADRANGLE
NEW JERSEY-PENNSYLVANIA
7.5 MINUTE SERIES (TOPOGRAPHIC)



Mapped by the Army Map Service
Edited and published by the Geological Survey
Control by USGS, USC&GS, USCE, and New Jersey Geodetic Survey
Topography from aerial photographs by photogrammetric methods
Field check 1943. Culture revised by the Geological Survey 1956
Polyconic projection. 1927 North American datum
10,000-foot grid based on New Jersey coordinate system
and Pennsylvania coordinate system, south zone
1000-meter Universal Transverse Mercator grid ticks,
zone 18, shown in blue

Red tint indicates areas in which only landmark buildings are shown
Revisions shown in purple compiled by Geological Survey in
cooperation with State of Pennsylvania agencies, from aerial
photographs taken 1968. This information not field checked
Purple tint indicates extension of urban areas



THIS MAP COMPLIES WITH NATIONAL MAP ACCURACY STANDARDS
FOR SALE BY U. S. GEOLOGICAL SURVEY, WASHINGTON, D. C. 20242
A FOLDER DESCRIBING TOPOGRAPHIC MAPS AND SYMBOLS IS AVAILABLE ON REQUEST

ROAD CLASSIFICATION
Heavy-duty ——— Light-duty ———
Medium-duty ——— Unimproved dirt ———
Interstate Route U. S. Route State Route



U.S.G.S.
FILE COPY
TOPOGRAPHIC DIVISION

EASTON, N. J.-PA.
N4037.5-W7507.5/7.5
1956
PHOTO-REPRODUCED 1968
AMS 5965 II NW-SERIES V822

USGS
Historical File
Topographic Division

5355
AUG 26 1968