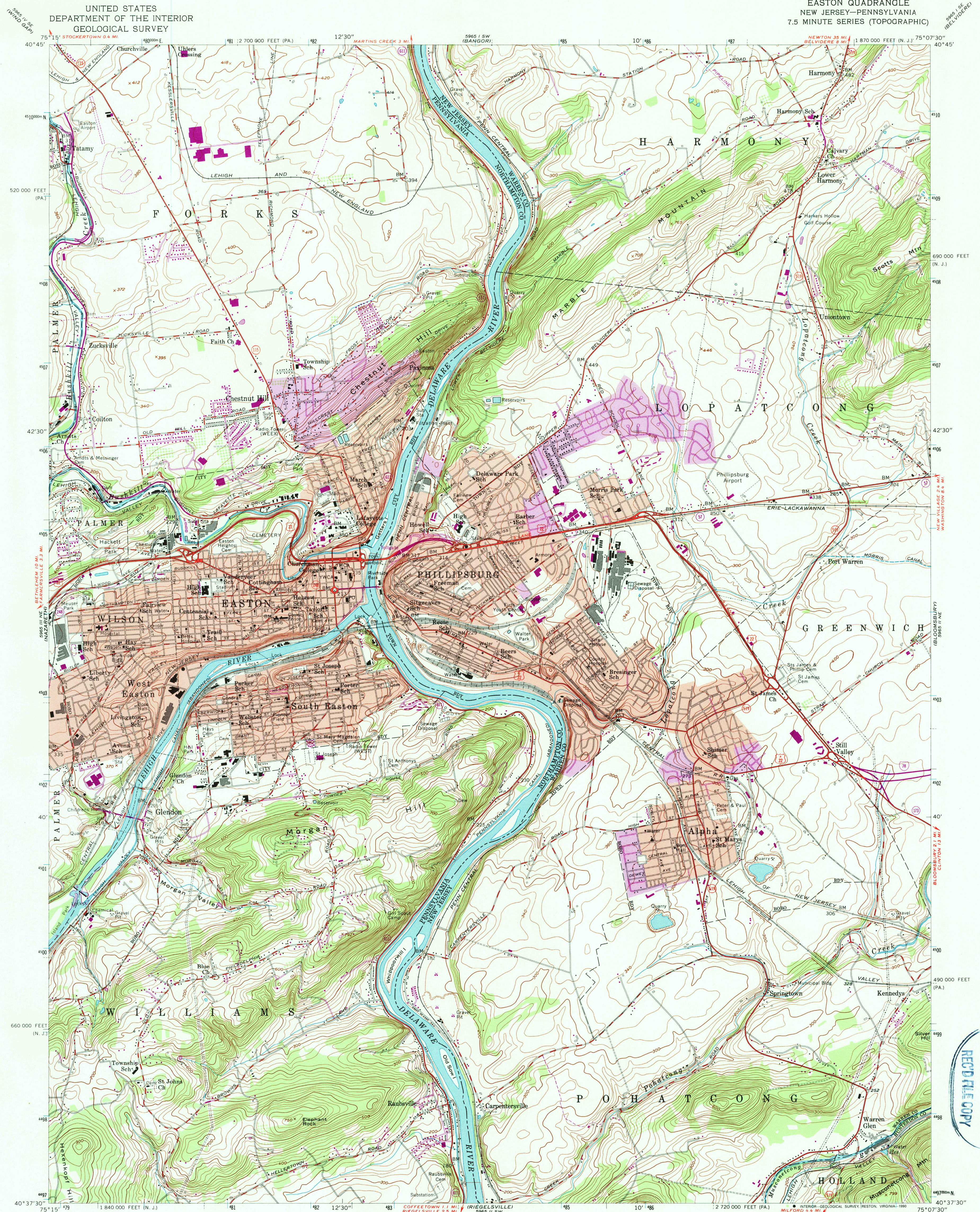


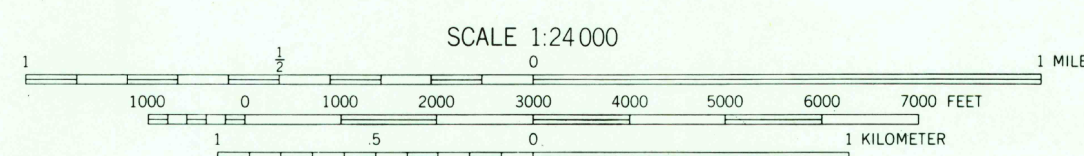
UNITED STATES
DEPARTMENT OF THE INTERIOR
GEOLOGICAL SURVEY

EASTON QUADRANGLE
NEW JERSEY-PENNSYLVANIA
7.5 MINUTE SERIES (TOPOGRAPHIC)



Mapped by the Army Map Service
Edited and published by the Geological Survey
Control by USGS, USC&GS, USCE, and New Jersey Geodetic Survey
Topography from aerial photographs by photogrammetric methods
Field check 1943. Culture revised by the Geological Survey 1956
Polyconic projection. 1927 North American datum
10,000-foot grids based on New Jersey coordinate system and Pennsylvania coordinate system, south zone
1000-meter Universal Transverse Mercator grid ticks, zone 18, shown in blue
Red tint indicates areas in which only landmark buildings are shown
Revisions shown in purple compiled by the Geological Survey in cooperation with State of Pennsylvania agencies from aerial photographs taken 1968 and taken 1973. This information not field checked
Purple tint indicates extension of urban areas

Map photoinspected 1980
No major culture or drainage changes observed



CONTOUR INTERVAL 20 FEET
NATIONAL GEODETIC VERTICAL DATUM OF 1929

THIS MAP COMPLIES WITH NATIONAL MAP ACCURACY STANDARDS
FOR SALE BY U.S. GEOLOGICAL SURVEY
DENVER, COLORADO 80225, OR RESTON, VIRGINIA 22092
A FOLDER DESCRIBING TOPOGRAPHIC MAPS AND SYMBOLS IS AVAILABLE ON REQUEST

ROAD CLASSIFICATION
Heavy-duty ——— Light-duty ———
Medium-duty ——— Unimproved dirt ———
Interstate Route U.S. Route State Route

EASTON, N. J.—PA.

N4037.5—W7507.5/7.5
PHOTOINSPECTED 1980
PHOTOREVISED 1968 AND 1973
AMS 5965 II NW—SERIES V822

USGS AND HISTORICAL MAP
4060 6 1980
REC'D FILE COPY