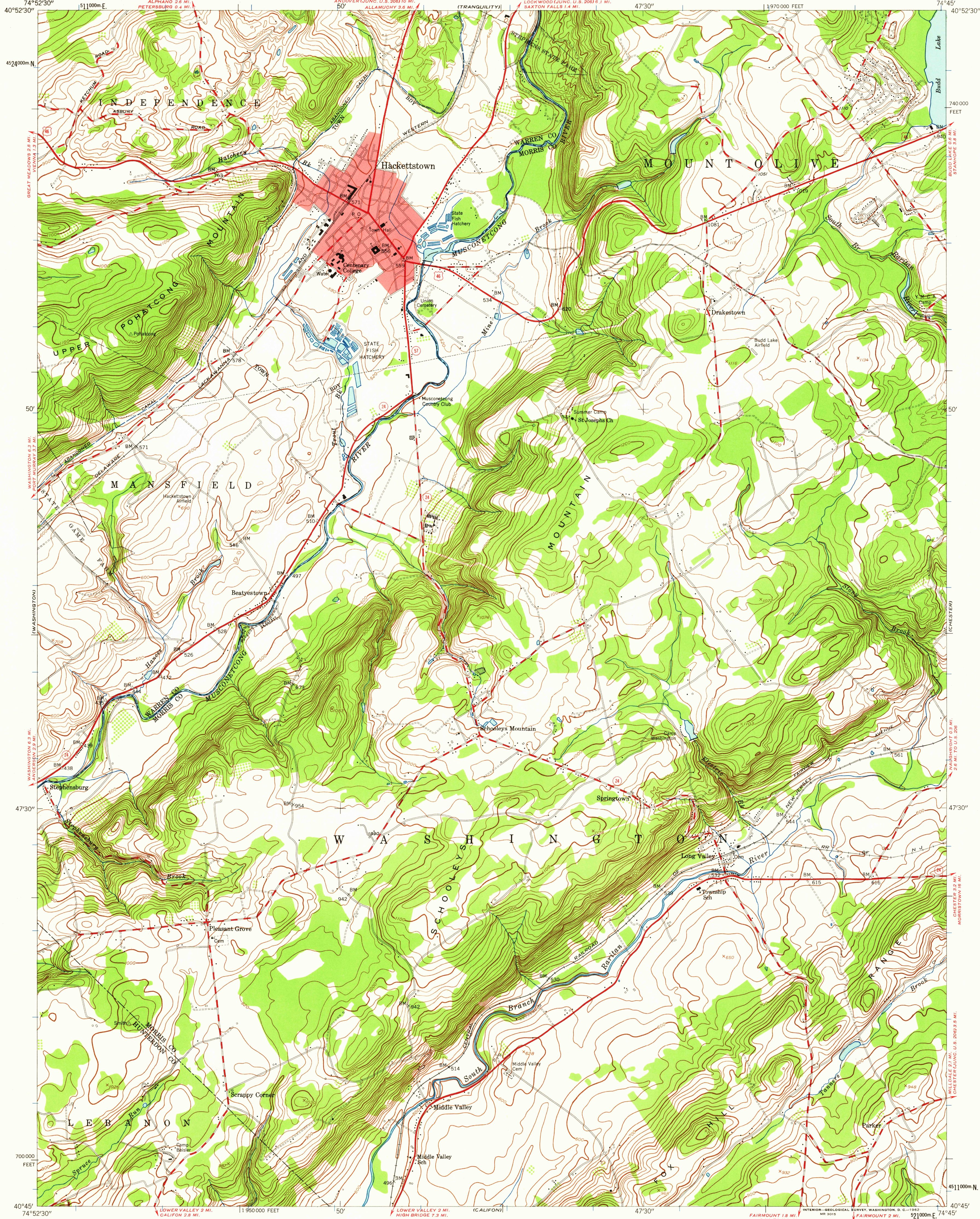


UNITED STATES
DEPARTMENT OF THE INTERIOR
GEOLOGICAL SURVEY

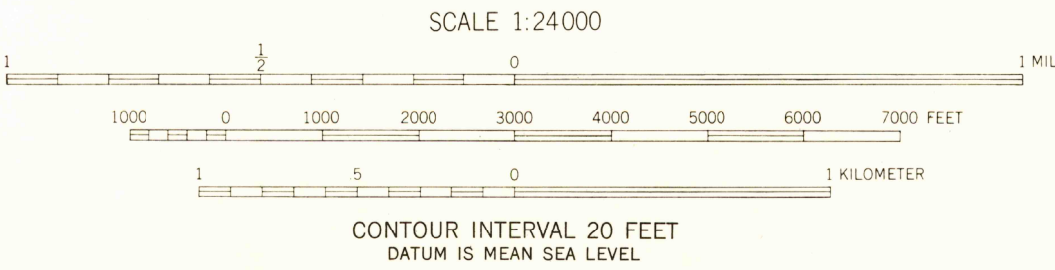
UNITED STATES
DEPARTMENT OF THE ARMY
CORPS OF ENGINEERS

HACKETTSTOWN QUADRANGLE
NEW JERSEY
7.5 MINUTE SERIES (TOPOGRAPHIC)



Mapped by the Army Map Service
Edited and published by the Geological Survey
Control by USGS, USCGS, and New Jersey Geodetic Survey
Topography from aerial photographs by stereophotogrammetric methods. Aerial photographs taken 1942. Field check 1943
Culture revised by the Geological Survey 1953
Polyconic projection. 1927 North American datum
10,000-foot grid based on New Jersey coordinate system
Red tint indicates area in which only landmark buildings are shown
1000-meter Universal Transverse Mercator grid ticks, zone 18, shown in blue

10°
TRUE NORTH
MAGNETIC NORTH
APPROXIMATE MEAN DECLINATION, 1953



ROAD CLASSIFICATION
Heavy-duty ——— Light-duty ———
Medium-duty ——— Unimproved dirt ———
U.S. Route ——— State Route ———

USGS
Historical File
HACKETTSTOWN, N. J.
N4045-W7445/7.5
Topographic Division

1953

THIS MAP COMPLIES WITH NATIONAL MAP ACCURACY STANDARDS
FOR SALE BY U. S. GEOLOGICAL SURVEY, WASHINGTON 25, D. C.
A FOLDER DESCRIBING TOPOGRAPHIC MAPS AND SYMBOLS IS AVAILABLE ON REQUEST

SEP 20 1952