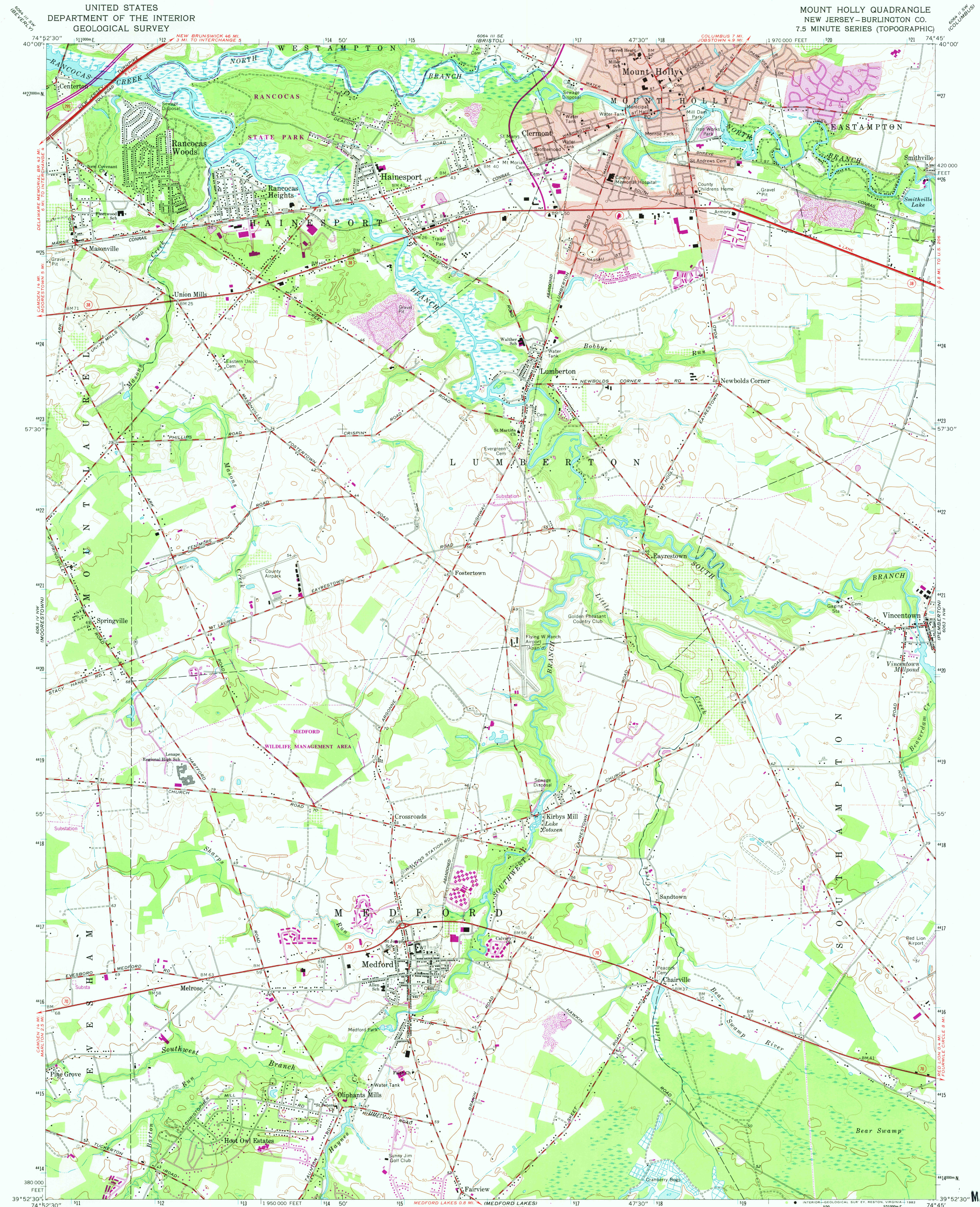
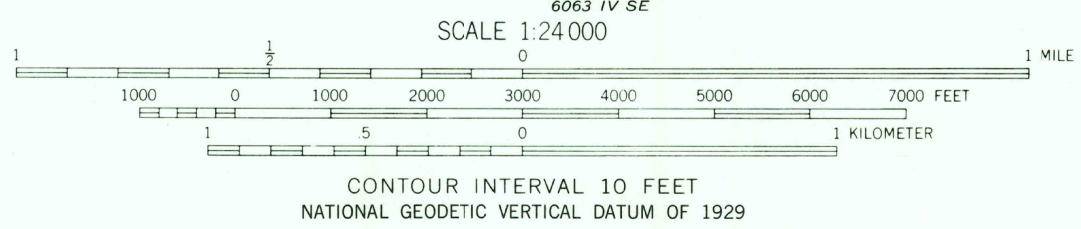
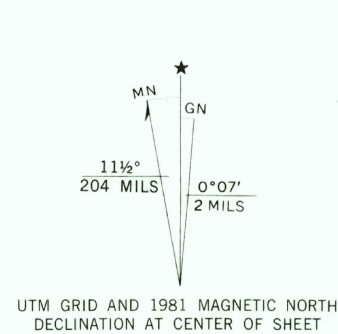


UNITED STATES  
DEPARTMENT OF THE INTERIOR  
GEOLOGICAL SURVEY

MOUNT HOLLY QUADRANGLE  
NEW JERSEY-BURLINGTON CO.  
7.5 MINUTE SERIES (TOPOGRAPHIC)



Mapped, edited, and published by the Geological Survey  
Control by USGS, NOS/NOAA, and New Jersey Geodetic Survey  
Planimetry by photogrammetric methods from aerial photographs  
taken 1951. Topography by planimetric surveys 1952-1953  
Revised from aerial photographs taken 1965. Field checked 1967  
Polyconic projection. 10,000-foot grid ticks based on New Jersey  
coordinate system. 1000-meter Universal Transverse Mercator grid  
ticks, zone 18, shown in blue. 1927 North American Datum. To  
place on the predicted North American Datum 1983 move the  
projection lines 6 meters south and 32 meters west as shown by  
dashed corner ticks  
Fine red dashed lines indicate selected fence and field lines where  
generally visible on aerial photographs. This information is unchecked  
Red tint indicates areas in which only landmark buildings are shown  
There may be private inholdings within the boundaries of  
the National or State reservations shown on this map



THIS MAP COMPLIES WITH NATIONAL MAP ACCURACY STANDARDS  
FOR SALE BY U. S. GEOLOGICAL SURVEY, RESTON, VIRGINIA 22092  
A FOLDER DESCRIBING TOPOGRAPHIC MAPS AND SYMBOLS IS AVAILABLE ON REQUEST

**ROAD CLASSIFICATION**

- Heavy-duty ——— Light-duty ———
- Medium-duty ——— Unimproved dirt ———
- Interstate Route ——— State Route ———

**QUADRANGLE LOCATION**

**RETURN TO:**  
USGS NMD HISTORICAL MAP ARCHIVES

**MOUNT HOLLY, N. J.**  
N3952.5—W7445/7.5

1967  
PHOTOREVISED 1981  
DMA 6063 IV NE-SERIES V822

Revisions shown in purple and woodland compiled from aerial  
photographs taken 1975 and other sources. This information  
not field checked. Map edited 1981  
Purple tint indicates extension of urban areas

MAY 28 1982

465