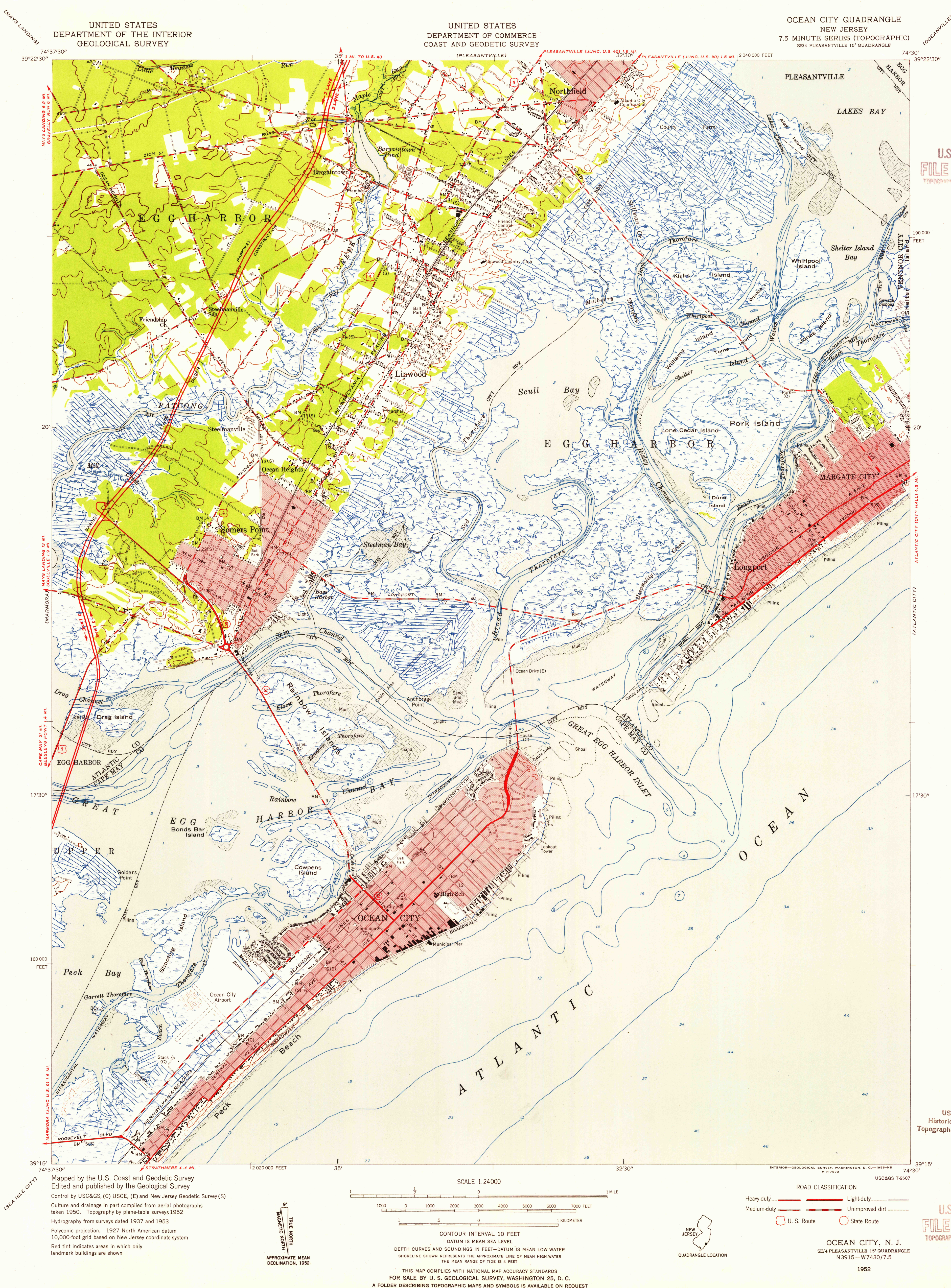


U.S.G.S.  
FILE COPY  
TOPOGRAPHIC DIVISION

USCS  
Historical File  
Topographic Division

U.S.G.S.  
FILE COPY  
TOPOGRAPHIC DIVISION

OCT 26 1955



Mapped by the U.S. Coast and Geodetic Survey  
Edited and published by the Geological Survey  
Control by USC&GS, (C) USCE, (E) and New Jersey Geodetic Survey (S)  
Culture and drainage in part compiled from aerial photographs  
taken 1950. Topography by plane-table surveys 1952  
Hydrography from surveys dated 1937 and 1953  
Polyconic projection. 1927 North American datum  
10,000-foot grid based on New Jersey coordinate system  
Red tint indicates areas in which only  
landmark buildings are shown

TRUE NORTH  
MAGNETIC NORTH  
APPROXIMATE MEAN  
DECLINATION, 1952

SCALE 1:24000  
1000 0 1000 2000 3000 4000 5000 6000 7000 FEET  
1 5 0 5 1 KILOMETER  
CONTOUR INTERVAL 10 FEET  
DATUM IS MEAN SEA LEVEL  
DEPTH CURVES AND SOUNDINGS IN FEET—DATUM IS MEAN LOW WATER  
SHORELINE SHOWN REPRESENTS THE APPROXIMATE LINE OF MEAN HIGH WATER  
THE MEAN RANGE OF TIDE IS 4 FEET

THIS MAP COMPLIES WITH NATIONAL MAP ACCURACY STANDARDS  
FOR SALE BY U. S. GEOLOGICAL SURVEY, WASHINGTON 25, D. C.  
A FOLDER DESCRIBING TOPOGRAPHIC MAPS AND SYMBOLS IS AVAILABLE ON REQUEST

ROAD CLASSIFICATION  
Heavy-duty ——— Light-duty ———  
Medium-duty ——— Unimproved dirt ———  
U. S. Route ——— State Route ———

OCEAN CITY, N. J.  
SE/4 PLEASANTVILLE 15' QUADRANGLE  
N 3915—W 7430/7.5

1952