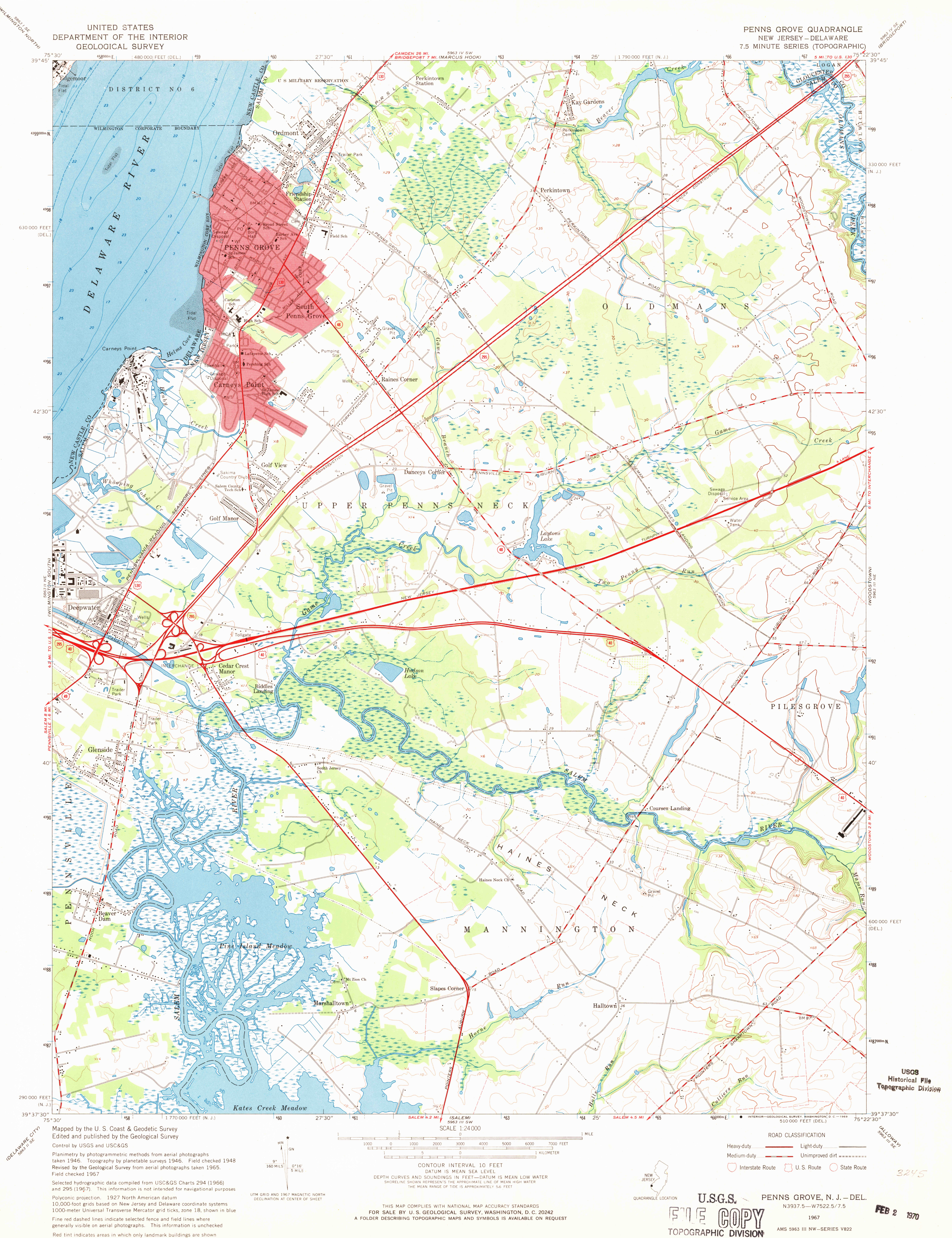


UNITED STATES
DEPARTMENT OF THE INTERIOR
GEOLOGICAL SURVEY

PENNS GROVE QUADRANGLE
NEW JERSEY-DELAWARE
7.5 MINUTE SERIES (TOPOGRAPHIC)



Mapped by the U. S. Coast & Geodetic Survey
Edited and published by the Geological Survey
Control by USGS and USC&GS
Planimetry by photogrammetric methods from aerial photographs
taken 1946. Topography by planimetric surveys 1946. Field checked 1948
Revised by the Geological Survey from aerial photographs taken 1965.
Field checked 1967
Selected hydrographic data compiled from USC&GS Charts 294 (1966)
and 295 (1967). This information is not intended for navigational purposes
Polyconic projection. 1927 North American datum
10,000-foot grid based on New Jersey and Delaware coordinate systems
1000-meter Universal Transverse Mercator grid ticks, zone 18, shown in blue
Fine red dashed lines indicate selected fence and field lines where
generally visible on aerial photographs. This information is unchecked
Red tint indicates areas in which only landmark buildings are shown

SCALE 1:24,000
CONTOUR INTERVAL 10 FEET
DATUM IS MEAN SEA LEVEL
DEPTH CURVES AND SOUNDINGS IN FEET—DATUM IS MEAN LOW WATER
SHORELINE SHOWS APPROXIMATE LINE OF MEAN HIGH WATER
THE MEAN RANGE OF TIDE IS APPROXIMATELY 5.6 FEET

ROAD CLASSIFICATION
Heavy-duty ——— Light-duty ———
Medium-duty ——— Unimproved dirt ———
Interstate Route U. S. Route State Route
NEW JERSEY
QUADRANGLE LOCATION
U.S.G.S. PENNS GROVE, N. J.—DEL.
N3937.5—W7522.5/7.5
1967
AMS 5963 III NW—SERIES V822
FEB 2 1970