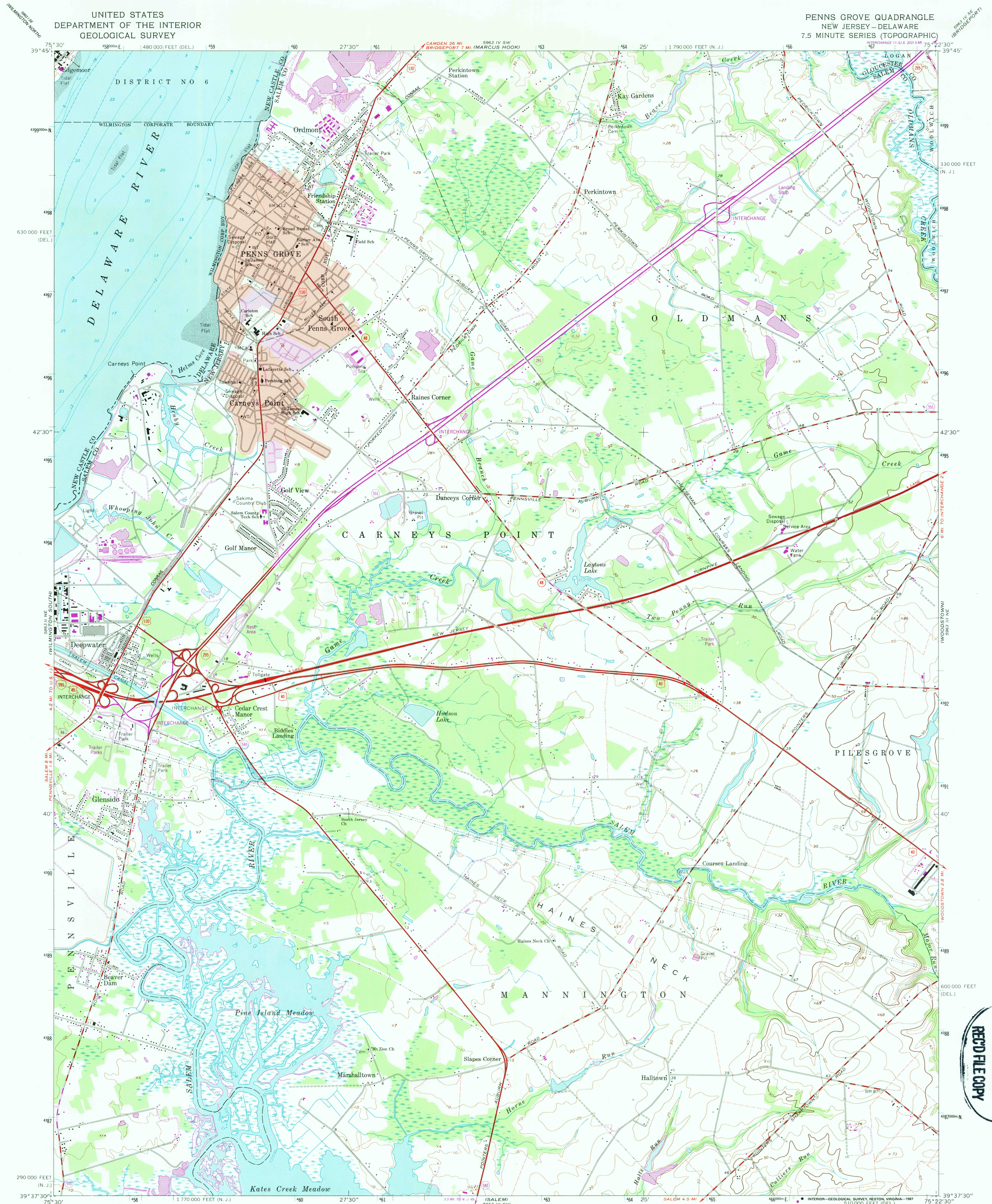


UNITED STATES  
DEPARTMENT OF THE INTERIOR  
GEOLOGICAL SURVEY

PENNS GROVE QUADRANGLE  
NEW JERSEY-DELAWARE  
7.5 MINUTE SERIES (TOPOGRAPHIC)



Maped by U. S. Coast & Geodetic Survey  
Edited and published by the Geological Survey  
Control by USGS and NOS/NOAA  
Planimetry by photogrammetric methods from aerial photographs  
taken 1946. Topography by planimetric methods 1946. Field checked 1948  
Revised by the Geological Survey from aerial photographs taken 1965  
Field checked 1967  
Selected hydrographic data compiled from NOS charts 294 (1966)  
and 295 (1967). This information is not intended for navigational purposes  
Polyconic projection. 10,000-foot grid ticks based on New Jersey  
and Delaware coordinate systems  
1000-meter Universal Transverse Mercator grid ticks,  
zone 18, shown in blue  
1927 North American Datum  
To place on the predicted North American Datum 1983  
move the projection lines 6 meters south and  
31 meters west as shown by dashed corner ticks  
Fine red dashed lines indicate selected fence and field lines where  
generally visible on aerial photographs. This information is unchecked  
Red tint indicates area in which only landmark buildings are shown

Revisions shown in purple and woodland compiled by the  
Geological Survey from aerial photographs taken 1983 and  
other sources. This information not field checked  
Map edited 1986  
Purple tint indicates extension of urban area

THIS MAP COMPLIES WITH NATIONAL MAP ACCURACY STANDARDS  
FOR SALE BY U. S. GEOLOGICAL SURVEY  
DENVER, COLORADO 80225, OR RESTON, VIRGINIA 22092  
A FOLDER DESCRIBING TOPOGRAPHIC MAPS AND SYMBOLS IS AVAILABLE ON REQUEST

ROAD CLASSIFICATION  
Heavy-duty ——— Light-duty ———  
Medium-duty ——— Unimproved dirt ———  
Interstate Route ——— U. S. Route ——— State Route ———

PENNS GROVE, N. J. - DEL.  
39075-F4-TF-024

1967  
PHOTOREVISED 1986  
DMA 5963 III NW - SERIES V822

USGS AND HISTORICAL MAP  
DEC 21 1997  
REC'D FILE COPY