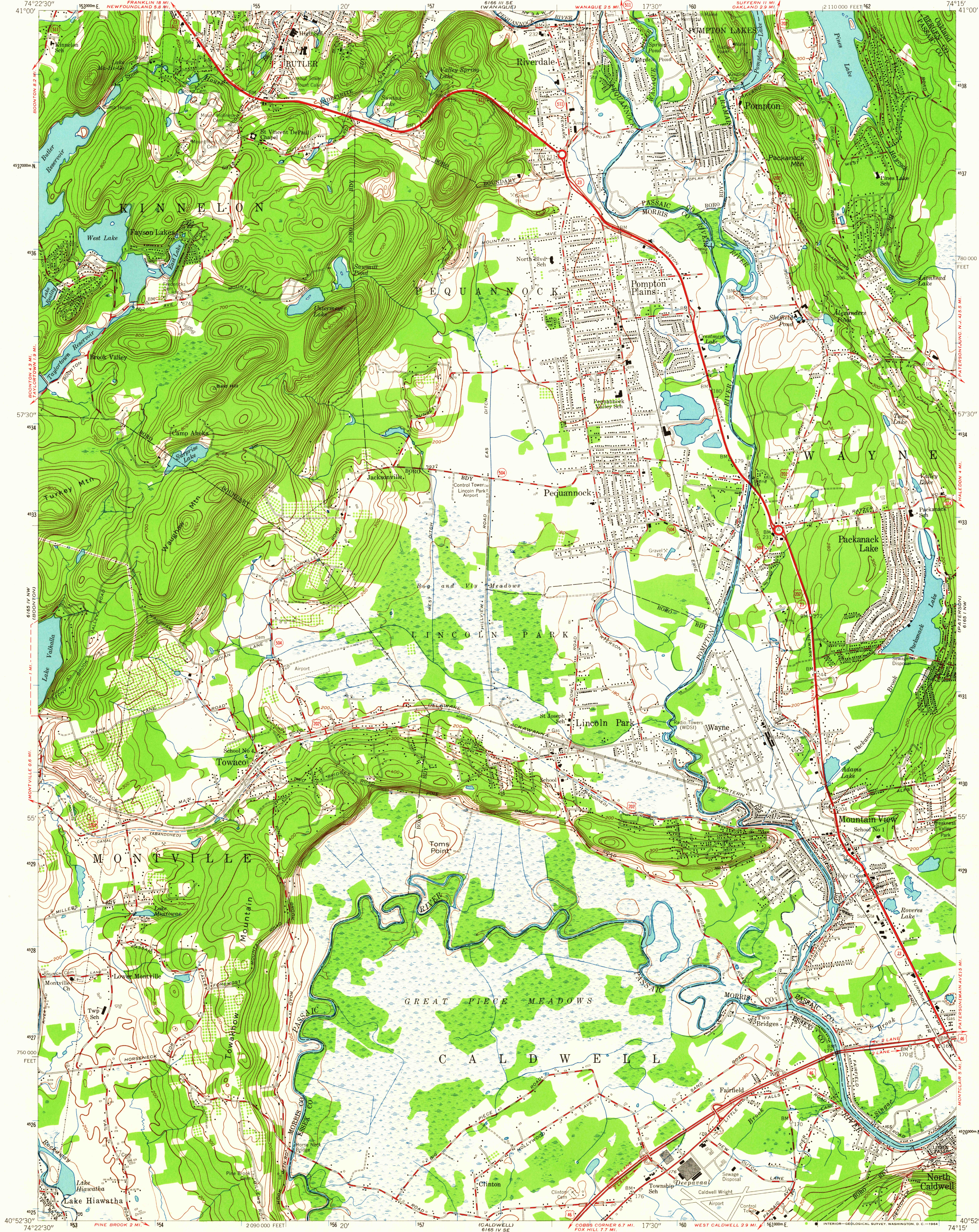


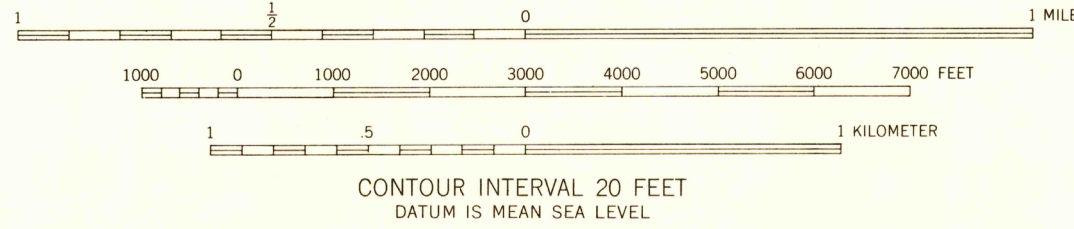
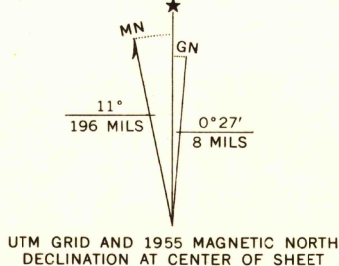
UNITED STATES
DEPARTMENT OF THE INTERIOR
GEOLOGICAL SURVEY

UNITED STATES
DEPARTMENT OF THE ARMY
CORPS OF ENGINEERS

POMPTON PLAINS QUADRANGLE
NEW JERSEY
7.5 MINUTE SERIES (TOPOGRAPHIC)



Mapped by the Army Map Service
Edited and published by the Geological Survey
Control by USC&GS and New Jersey Geodetic Survey
Topography from aerial photographs by photogrammetric
methods. Aerial photographs taken 1942. Field check 1943
Culture revised by the Geological Survey 1955
Polyconic projection. 1927 North American datum
10,000-foot grid based on New Jersey coordinate system
1000-meter Universal Transverse Mercator grid ticks,
zone 18, shown in blue



ROAD CLASSIFICATION
Heavy-duty ——— Light-duty ———
Medium-duty ——— Unimproved dirt ———
U. S. Route State Route

POMPTON PLAINS, N. J.
N4052.5-W7415/7.5

1955

AMS 6165 IV NE-SERIES V822

THIS MAP COMPLIES WITH NATIONAL MAP ACCURACY STANDARDS
FOR SALE BY U. S. GEOLOGICAL SURVEY, WASHINGTON 25, D. C.
A FOLDER DESCRIBING TOPOGRAPHIC MAPS AND SYMBOLS IS AVAILABLE ON REQUEST

AUG 27 1964

USGS
Historical File
Topographic Division

U.S.G.S.
FILE COPY
TOPOGRAPHIC DIVISION
6215