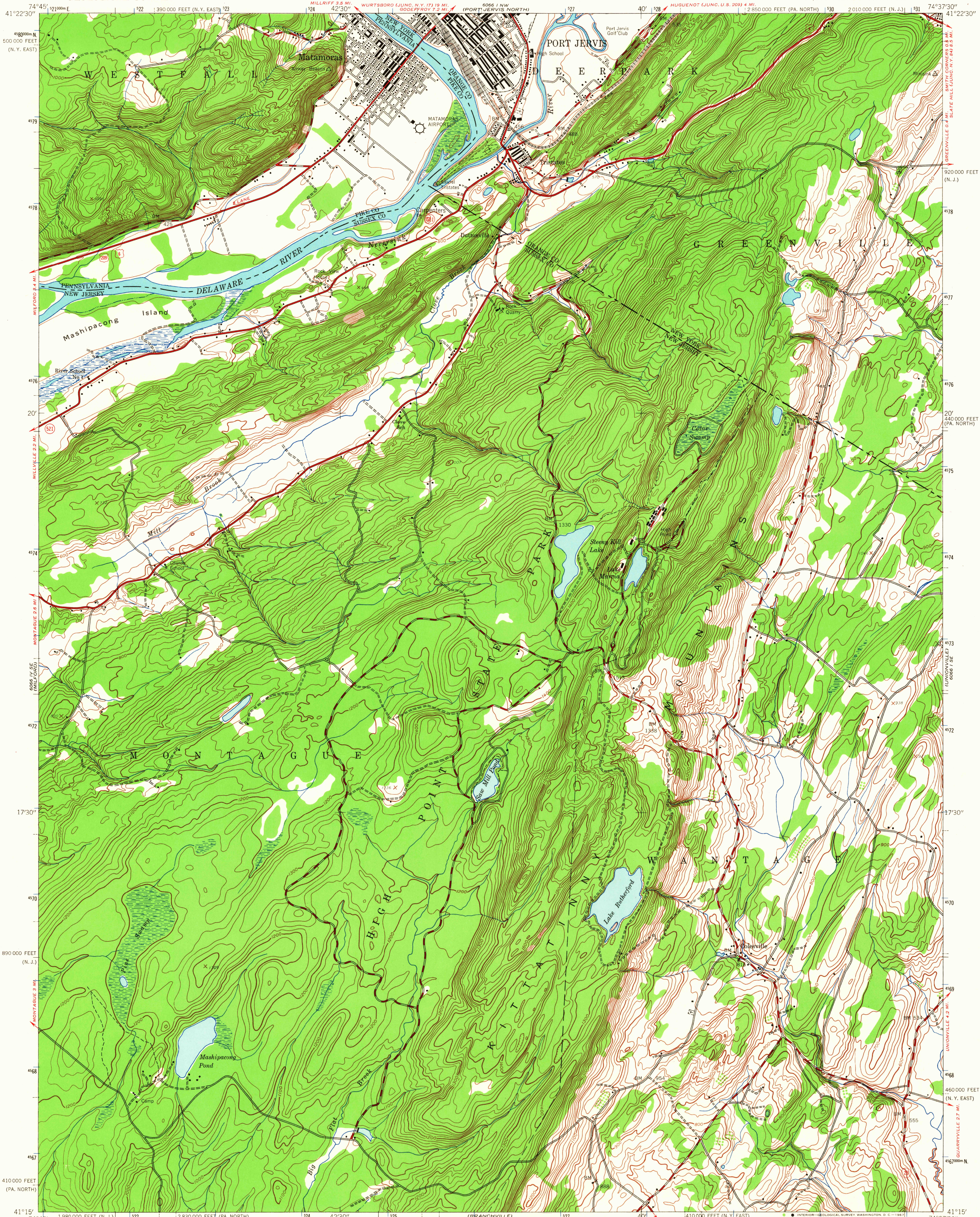
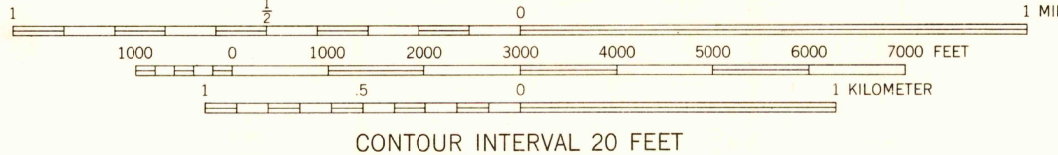
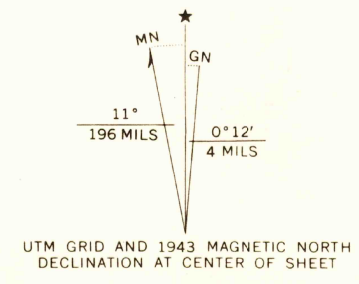


UNITED STATES
DEPARTMENT OF THE INTERIOR
GEOLOGICAL SURVEY

PORT JERVIS SOUTH QUADRANGLE
NEW JERSEY—NEW YORK—PENNSYLVANIA
7.5 MINUTE SERIES (TOPOGRAPHIC)
SW/4 PORT JERVIS 15' QUADRANGLE



Mapped by the Army Map Service
Published for civil use by the Geological Survey
Control by USC&GS
Topography by photogrammetric methods from aerial photographs
taken 1942. Field checked 1943.
Polyconic projection. 1927 North American datum
10,000-foot grids based on New York coordinate system, east zone,
Pennsylvania coordinate system, north zone and
New Jersey coordinate system.
1000-meter Universal Transverse Mercator grid ticks,
zone 18, shown in blue



THIS MAP COMPLIES WITH NATIONAL MAP ACCURACY STANDARDS
FOR SALE BY U.S. GEOLOGICAL SURVEY, WASHINGTON, D.C. 20242
A FOLDER DESCRIBING TOPOGRAPHIC MAPS AND SYMBOLS IS AVAILABLE ON REQUEST

U.S.G.S.
FILE COPY
TOPOGRAPHIC DIVISION

ROAD CLASSIFICATION
Heavy-duty ——— Light-duty ———
Medium-duty ——— Unimproved dirt ———
U.S. Route ——— State Route ———

PORT JERVIS SOUTH, N.J.-N.Y.-PA.
SW/4 PORT JERVIS 15' QUADRANGLE
N4115-W7437.5/7.5

1943
AMS 6066 1 SW-SERIES V821

USGS
Historical File
Topographic Division

8190
SEP 21 1967