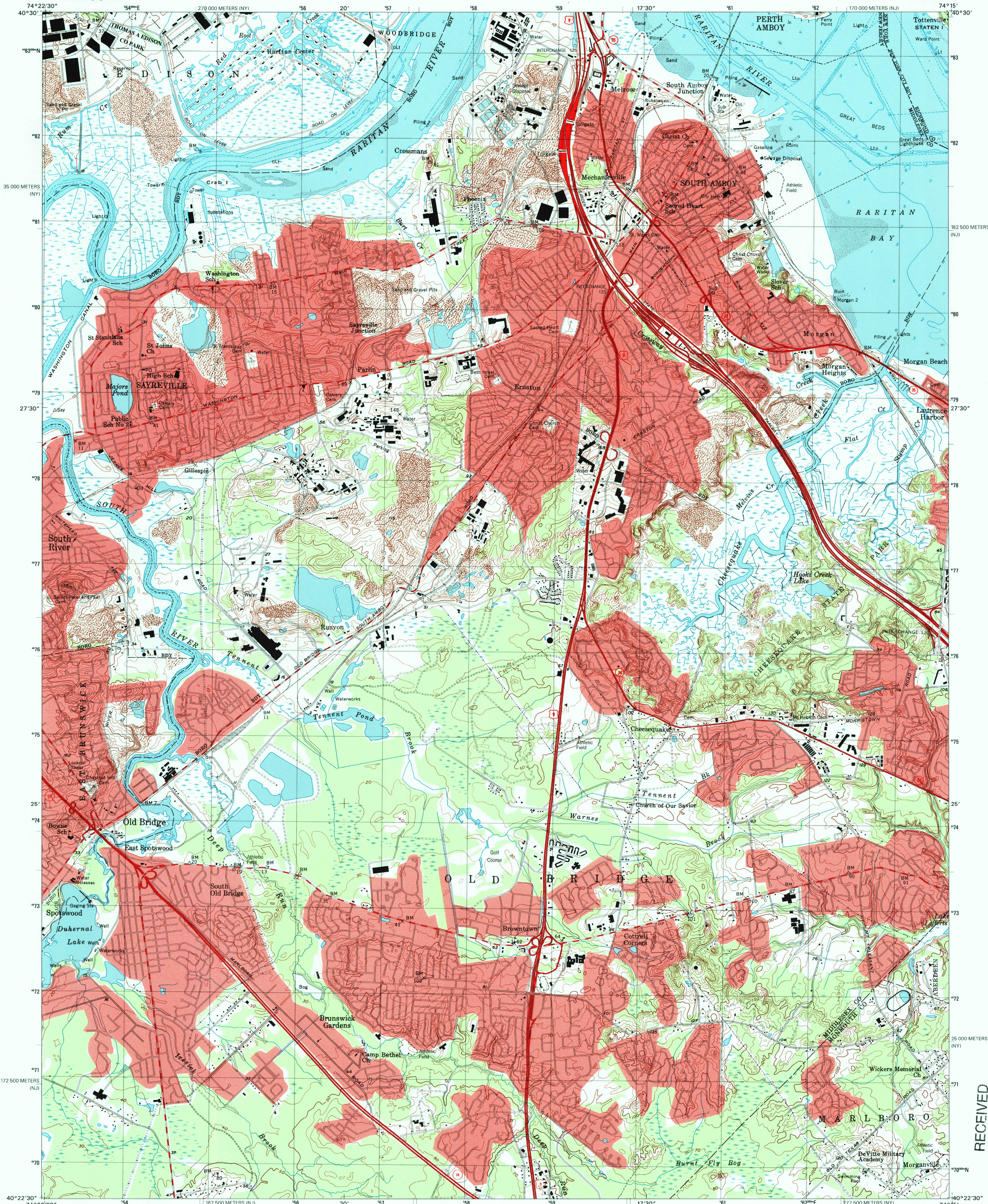


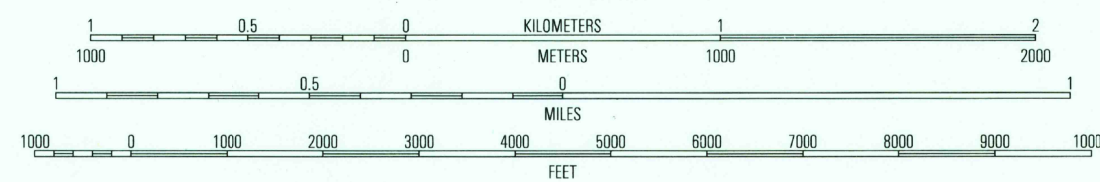
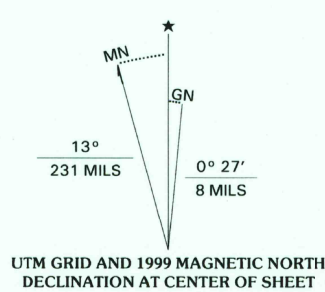


U.S. DEPARTMENT OF THE INTERIOR  
U.S. GEOLOGICAL SURVEY

SOUTH AMBOY QUADRANGLE  
NEW JERSEY-NEW YORK  
7.5-MINUTE SERIES (TOPOGRAPHIC)



Produced by the United States Geological Survey  
Topography compiled 1938. Planimetry derived from imagery taken 1995 and other sources. Survey control current as of 1954.  
Selected hydrographic data compiled from NOS Charts 286 (1954) and 375 (1953). This information is not intended for navigational purposes.  
North American Datum of 1983 (NAD 83). Projection and 1,000-meter grid: Universal Transverse Mercator, zone 18.  
2,500-meter ticks: New Jersey Coordinate System of 1983 and New York Coordinate System of 1983 (Long Island zone).  
North American Datum of 1927 (NAD 27) is shown by dashed corner ticks. The values of the shift between NAD 83 and NAD 27 for 7.5-minute intersections are obtainable from National Geographic Survey NADCON software.  
There may be private inholdings within the boundaries of the National or State reservations shown on this map.  
Landmark buildings verified 1954.



CONTOUR INTERVAL 10 FEET  
NATIONAL GEODETIC VERTICAL DATUM OF 1929  
TO CONVERT FROM FEET TO METERS, MULTIPLY BY 0.3048  
DEPTH CURVES AND SOUNDINGS IN FEET. DATUM IS MEAN LOWER LOW WATER  
THE RELATIONSHIP BETWEEN THE TWO DATUMS IS VARIABLE  
THE MEAN RANGE OF TIDE IS APPROXIMATELY 5.3 FEET



ROAD CLASSIFICATION  
Primary highway hard surface .....  
Secondary highway hard surface .....  
Light-duty road, hard or improved surface .....  
Unimproved road .....  
Interstate Route U.S. Route State Route

1	2	3
4	5	6
7	8	9

SOUTH AMBOY, NJ-NY  
1995

NIMA 6164 IV NE-SERIES 822

RECEIVED  
JAN 31 2001  
USGS NMU  
HISTORICAL MAP ARCHIVES

