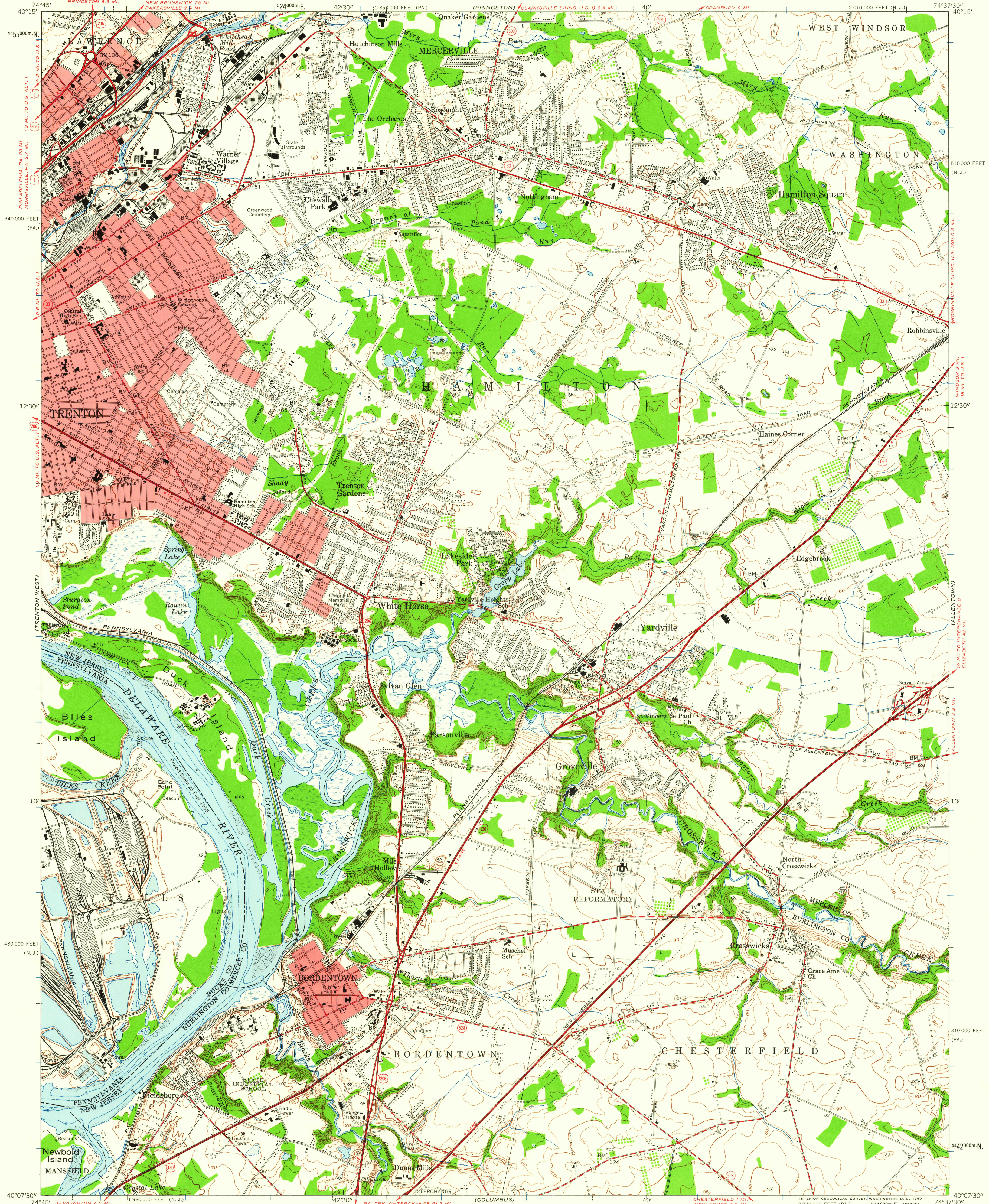


UNITED STATES
DEPARTMENT OF THE INTERIOR
GEOLOGICAL SURVEY

UNITED STATES
DEPARTMENT OF THE ARMY
CORPS OF ENGINEERS

TRENTON EAST QUADRANGLE
NEW JERSEY-PENNSYLVANIA
7.5 MINUTE SERIES (TOPOGRAPHIC)
NW 1/4 BORDENTOWN 15' QUADRANGLE



Mapped by the Army Map Service
Published for civil use by the Geological Survey
Control by USC&GS, USCE, and New Jersey Geodetic Control Survey
Topography from aerial photographs by photogrammetric methods
Aerial photographs taken 1947. Planimetric detail revised from
aerial photographs taken 1955-1956. Field check 1957
Hydrography compiled from USC&GS chart 296 (1954)
Polyconic projection. 1927 North American datum
10,000-foot grid based on New Jersey coordinate system,
and Pennsylvania coordinate system, south zone
1000-meter Universal Transverse Mercator grid ticks,
zone 18, shown in blue
Red tint indicates areas in which only
landmark buildings are shown

APPROXIMATE MEAN
DECLINATION, 1957

SCALE 1:24,000
1 000 0 1000 2000 3000 4000 5000 6000 7000 FEET
1 0 1 2 3 4 5 6 7 8 9 10 KILOMETER
CONTOUR INTERVAL 10 FEET
DATUM IS MEAN SEA LEVEL
DEPTH CURVES AND SOUNDINGS IN FEET-DATUM IS MEAN LOW WATER
SHORELINE SHOWN REPRESENTS THE APPROXIMATE LINE OF MEAN HIGH WATER
THE MEAN RANGE OF TIDE IS APPROXIMATELY 6.3 FEET



U.S.G.S.
FILE COPY
TOPOGRAPHIC DIVISION

TRENTON EAST, N.J.-PA.
NW 1/4 BORDENTOWN 15' QUADRANGLE
N4007.5-W7437.5/7.5

1957

OCT 17 1960

4125