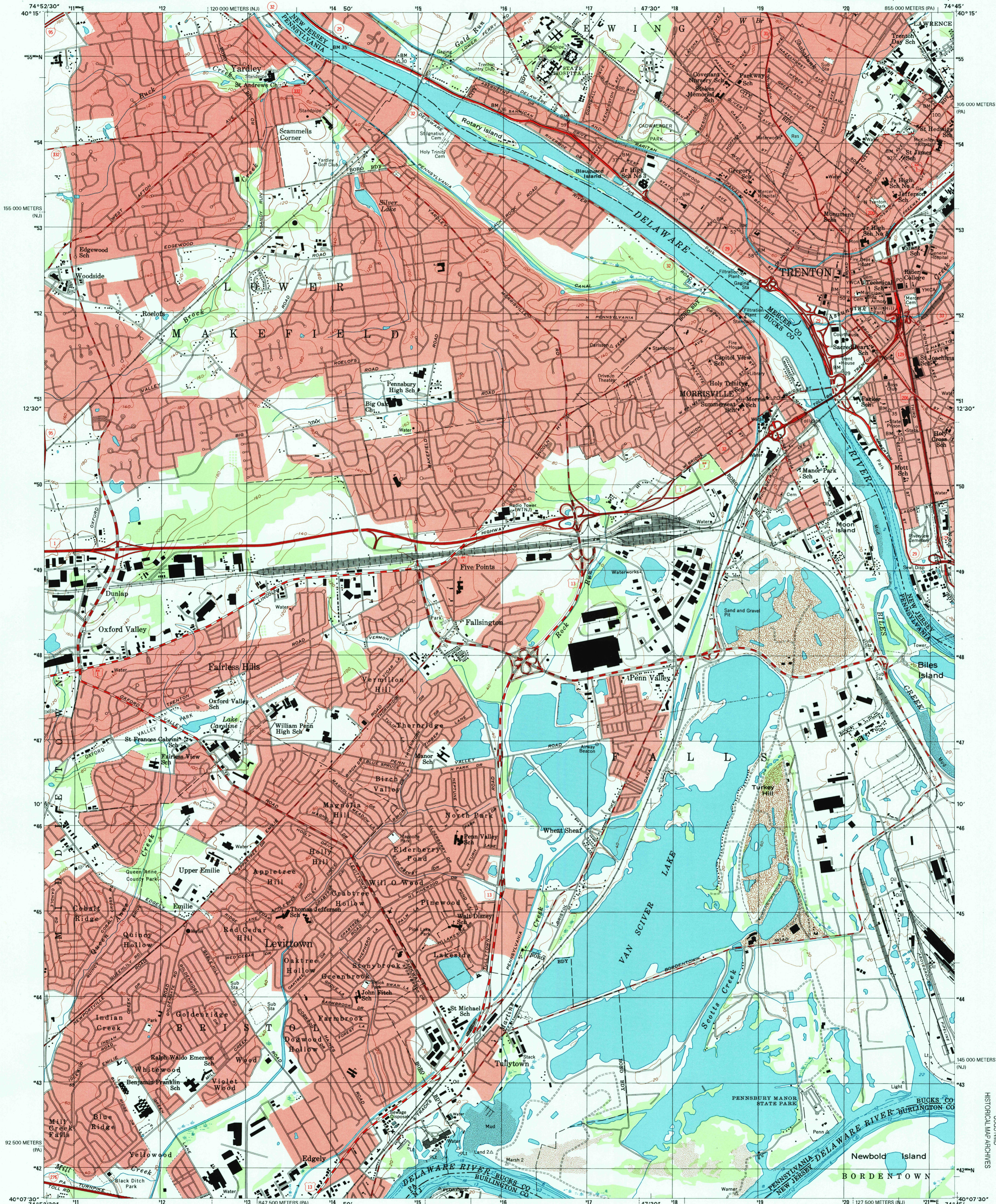


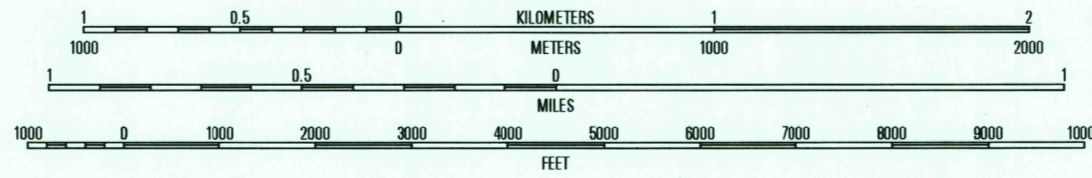
UNITED STATES  
DEPARTMENT OF THE INTERIOR  
GEOLOGICAL SURVEY

TRENTON WEST QUADRANGLE  
NEW JERSEY-PENNSYLVANIA  
7.5-MINUTE SERIES (TOPOGRAPHIC)



Produced by the United States Geological Survey  
Topography compiled 1942. Planimetry derived from imagery  
taken 1995. Survey control current as of 1943.  
North American Datum of 1983 (NAD 83). Projection and  
1 000-meter grid: Universal Transverse Mercator, zone 18  
2 500-meter ticks: Pennsylvania Coordinate System of 1983  
(south zone) and New Jersey Coordinate System of 1983  
(south zone).  
North American Datum of 1927 (NAD 27) is shown by dashed  
corner ticks. The values of the shift between NAD 83 and  
NAD 27 for 7.5-minute intersections are obtainable from  
National Geodetic Survey NADCON software.  
There may be private inholdings within the boundaries of the  
National or State reservations shown on this map.  
Landmark buildings verified 1943.

UTM GRID AND 1983 MAGNETIC NORTH  
DECLINATION AT CENTER OF SHEET



CONTOUR INTERVAL 20 FEET  
NATIONAL GEODETIC VERTICAL DATUM OF 1929  
TO CONVERT FROM FEET TO METERS, MULTIPLY BY 0.3048  
THE MEAN RANGE OF TIDE IS APPROXIMATELY 6.3 FEET



QUADRANGLE LOCATION

ROAD CLASSIFICATION  
Primary highway  
hard surface .....  
Secondary highway  
hard surface .....  
Light-duty road, hard or  
improved surface .....  
Unimproved road .....  
Interstate Route  
U.S. Route  
State Route

1	2	3
4	5	6
7	8	9

ADJOINING 7.5' QUADRANGLE NAMES

TRENTON WEST, NJ-PA  
1995

NIMA 6064 III NE-SERIES V831

FOR SALE BY U.S. GEOLOGICAL SURVEY, P.O. BOX 25286, DENVER, COLORADO 80225  
A FOLDER DESCRIBING TOPOGRAPHIC MAPS AND SYMBOLS IS AVAILABLE ON REQUEST

RECEIVED  
MAR 31 1999  
USGS NIMD  
HISTORICAL MAP ARCHIVES

