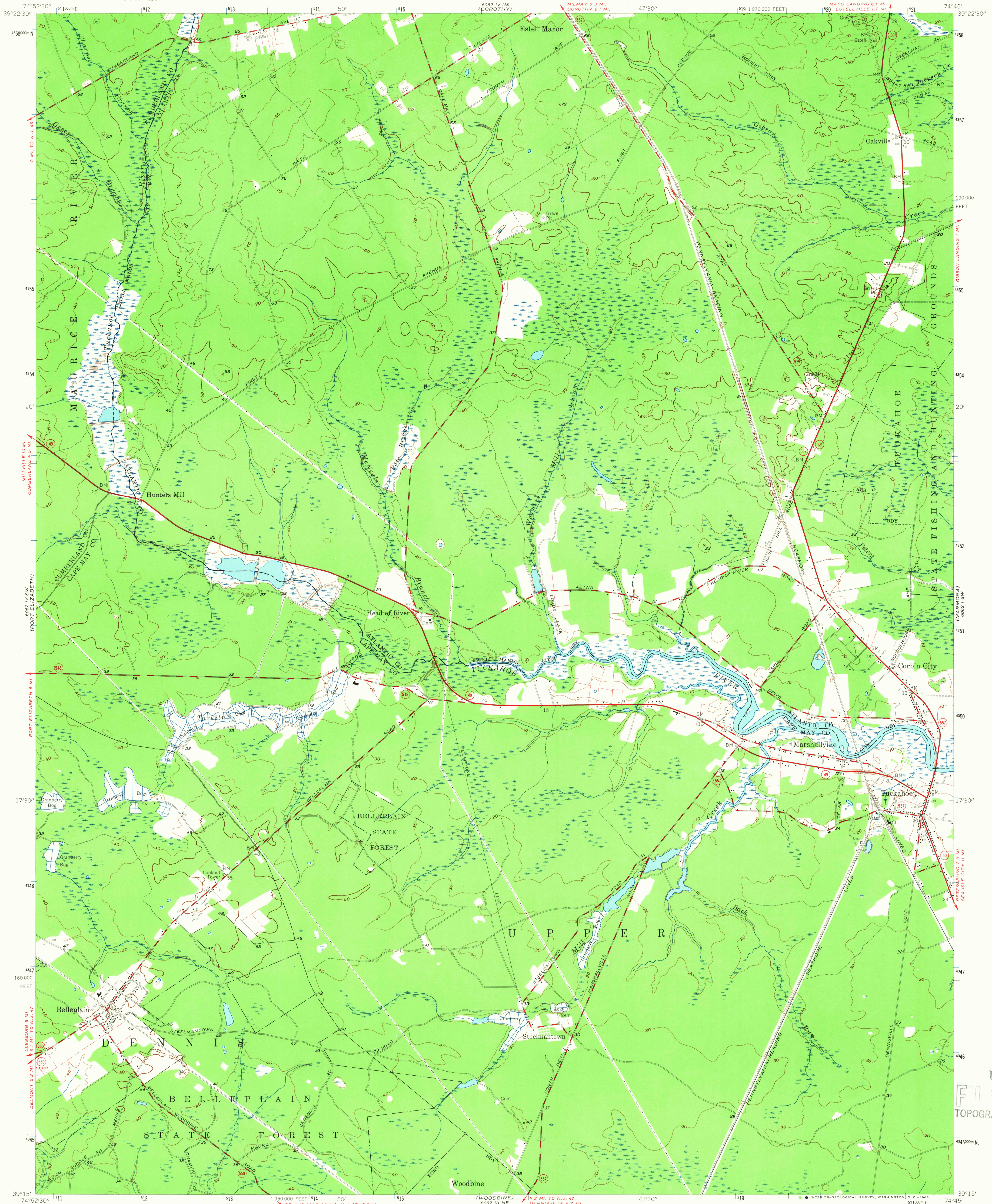
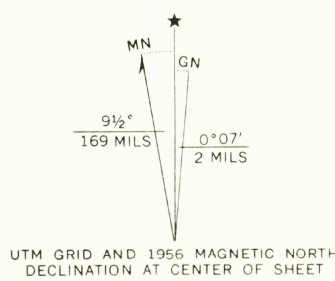


UNITED STATES
DEPARTMENT OF THE INTERIOR
GEOLOGICAL SURVEY

TUCKAHOE QUADRANGLE
NEW JERSEY
7.5 MINUTE SERIES (TOPOGRAPHIC)
SE/4 TUCKAHOE 15' QUADRANGLE
MAYS LANDING 6.1 MI.
ESTELLVILLE 1.7 MI.



Mapped, edited, and published by the Geological Survey
Control by USC&GS and New Jersey Geodetic Survey
Culture and drainage in part compiled from aerial photographs
taken 1951. Topography by planetable surveys 1955-1956
Polyconic projection. 1927 North American datum
10,000-foot grid based on New Jersey coordinate system
1000-meter Universal Transverse Mercator grid ticks,
zone 18, shown in blue
Fine red dashed lines indicate selected fence and field lines
visible on aerial photographs. This information is unchecked



THIS MAP COMPLIES WITH NATIONAL MAP ACCURACY STANDARDS
FOR SALE BY U.S. GEOLOGICAL SURVEY, WASHINGTON, D.C. 20242
A FOLDER DESCRIBING TOPOGRAPHIC MAPS AND SYMBOLS IS AVAILABLE ON REQUEST



ROAD CLASSIFICATION
Heavy-duty ——— Light-duty ———
Medium-duty ——— Unimproved dirt ———
○ State Route

TUCKAHOE, N. J.
SE/4 TUCKAHOE 15' QUADRANGLE
N 3915-W 7445/7.5

1956
AMS 6062 IV SE-SERIES V822

U.S.G.S.
FIVE COPY
TOPOGRAPHIC DIVISION

USGS
Historical File
Topographic Division
2165
AUG 24 1965