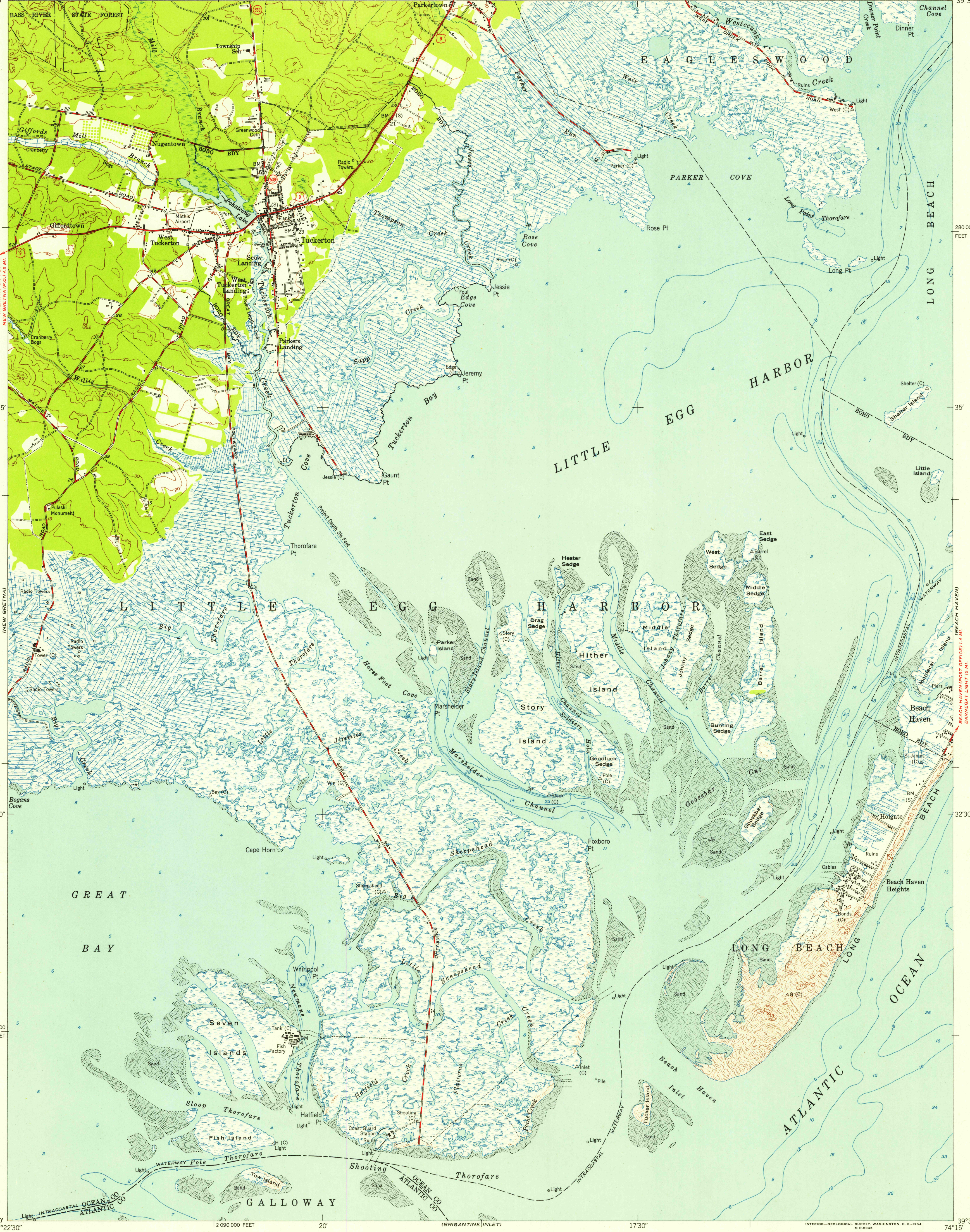


UNITED STATES
DEPARTMENT OF THE INTERIOR
GEOLOGICAL SURVEY

UNITED STATES
DEPARTMENT OF COMMERCE
COAST AND GEODETIC SURVEY

TUCKERTON QUADRANGLE
NEW JERSEY
7.5 MINUTE SERIES (TOPOGRAPHIC)
SE/4 TUCKERTON 15' QUADRANGLE



Map by the U. S. Coast & Geodetic Survey
Edited and published by the Geological Survey
Control by USC&GS (C), and New Jersey
Geodetic Control Survey (S)
Culture and drainage in part compiled from aerial
photographs taken 1950. Topography by plane-table
surveys 1950. Field check 1952
Hydrography from surveys dated 1935 and 1936
Polyconic projection, 1927 North American datum
10,000-foot grid based on New Jersey coordinate system

TRUE NORTH
MAGNETIC NORTH
APPROXIMATE MEAN
DECLINATION, 1952

SCALE 1:24,000
1 0 1000 2000 3000 4000 5000 6000 7000 FEET
1 0 5 10 KILOMETER
CONTOUR INTERVAL 10 FEET
DATUM IS MEAN SEA LEVEL
DEPTH CURVES AND SOUNDINGS IN FEET—DATUM IS MEAN LOW WATER
SHORELINE SHOWN REPRESENTS THE APPROXIMATE LINE OF MEAN HIGH WATER
THE MEAN RANGE OF TIDE IS 2 FEET IN INLAND WATERS
AND 3 FEET ALONG THE OCEAN
THIS MAP COMPLIES WITH NATIONAL MAP ACCURACY STANDARDS
FOR SALE BY U. S. GEOLOGICAL SURVEY, WASHINGTON 25, D. C.
A FOLDER DESCRIBING TOPOGRAPHIC MAPS AND SYMBOLS IS AVAILABLE ON REQUEST



ROAD CLASSIFICATION
Heavy-duty 4 LANE 16 LANE Light-duty
Medium-duty 4 LANE 16 LANE Unimproved dirt
U. S. Route State Route

TUCKERTON, N. J.
SE/4 TUCKERTON 15' QUADRANGLE
N 3930—W 7415/7.5

1952

USGS
Historical File
Topographic Division

U.S.G.S.
FILE COPY
TOPOGRAPHIC DIVISION

NOV 1 1954

3140