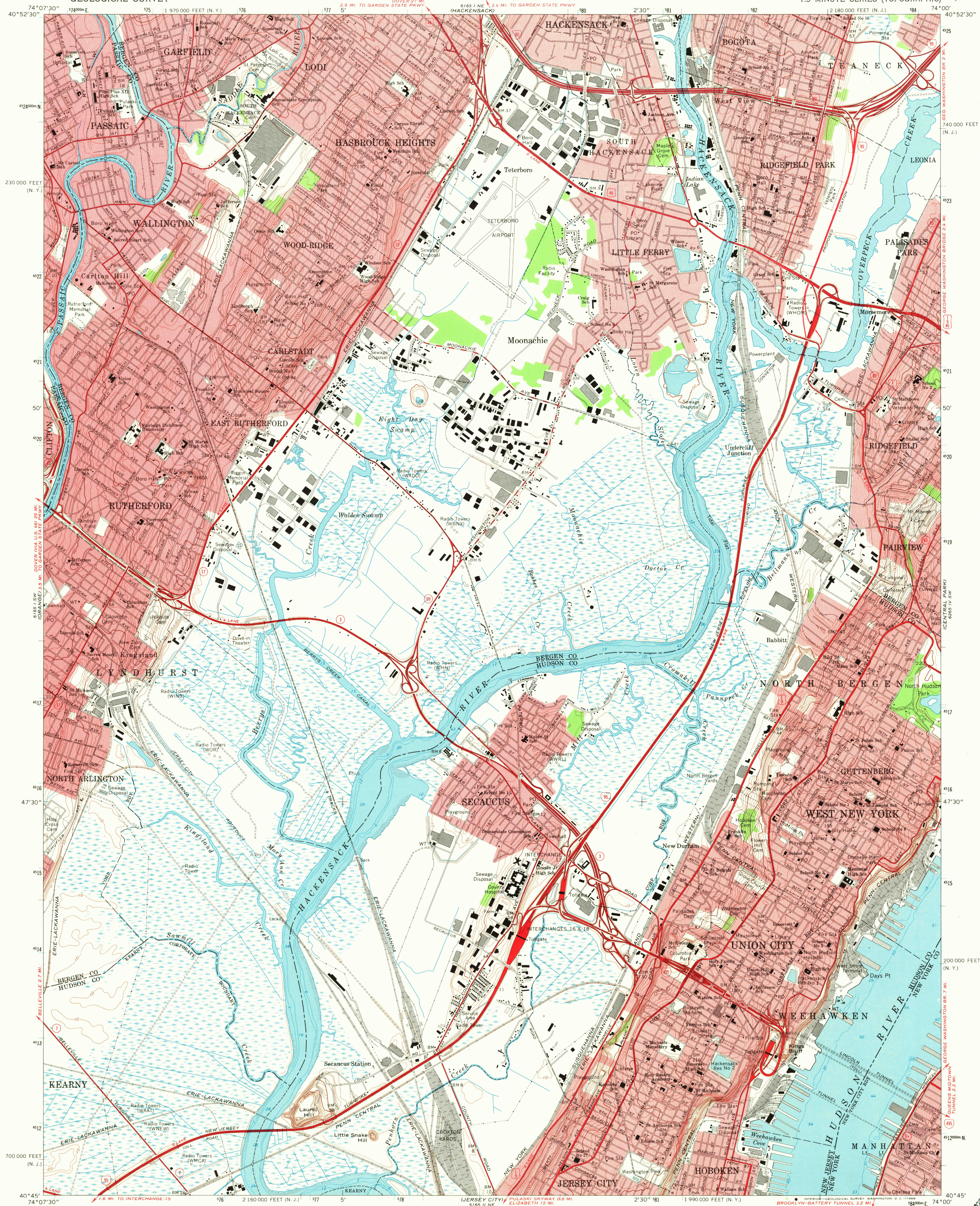


UNITED STATES  
DEPARTMENT OF THE INTERIOR  
GEOLOGICAL SURVEY

WEEHAWKEN QUADRANGLE  
NEW JERSEY—NEW YORK  
7.5 MINUTE SERIES (TOPOGRAPHIC)



Maped, edited, and published by the Geological Survey  
Revised in cooperation with New York Department of Transportation  
Control by USGS, USC&GS, USCE, and New Jersey Geodetic Survey  
Topography by planetable surveys 1935.  
Revised from aerial photographs taken 1966. Field checked 1967  
Selected hydrographic data compiled from USC&GS Charts 287, 745,  
and 746 (1966). This information is not intended for navigational purposes  
Polyconic projection. 1927 North American datum  
10,000-foot grids based on New Jersey coordinate system,  
and New York coordinate system, Long Island zone  
1000-meter Universal Transverse Mercator grid ticks,  
zone 18, shown in blue  
Red tint indicates areas in which only landmark buildings are shown

SCALE 1:24,000  
CONTOUR INTERVAL 10 FEET  
DATUM IS MEAN SEA LEVEL  
DEPTH CURVES AND SOUNDINGS IN FEET—DATUM IS MEAN LOW WATER  
SHORELINE SHOWN REPRESENTS THE APPROXIMATE LINE OF MEAN HIGH WATER  
THE MEAN RANGE OF TIDE IS APPROXIMATELY 4.2 FEET IN THE HUDSON RIVER  
AND 5.1 FEET IN THE HACKENSACK AND PASSAIC RIVERS  
THIS MAP COMPLIES WITH NATIONAL MAP ACCURACY STANDARDS  
FOR SALE BY U. S. GEOLOGICAL SURVEY, WASHINGTON, D. C. 20542  
A FOLDER DESCRIBING TOPOGRAPHIC MAPS AND SYMBOLS IS AVAILABLE ON REQUEST

ROAD CLASSIFICATION  
Heavy-duty ——— Light-duty ———  
Medium-duty ——— Unimproved dirt ———  
Interstate Route U. S. Route State Route

U.S.G.S.  
FILE COPY  
TOPOGRAPHIC DIVISION

WEEHAWKEN, N. J.—N. Y.  
N4045—W7400/7.5

1967  
AMS 6165 I SE—SERIES V822

DEC 17 1968