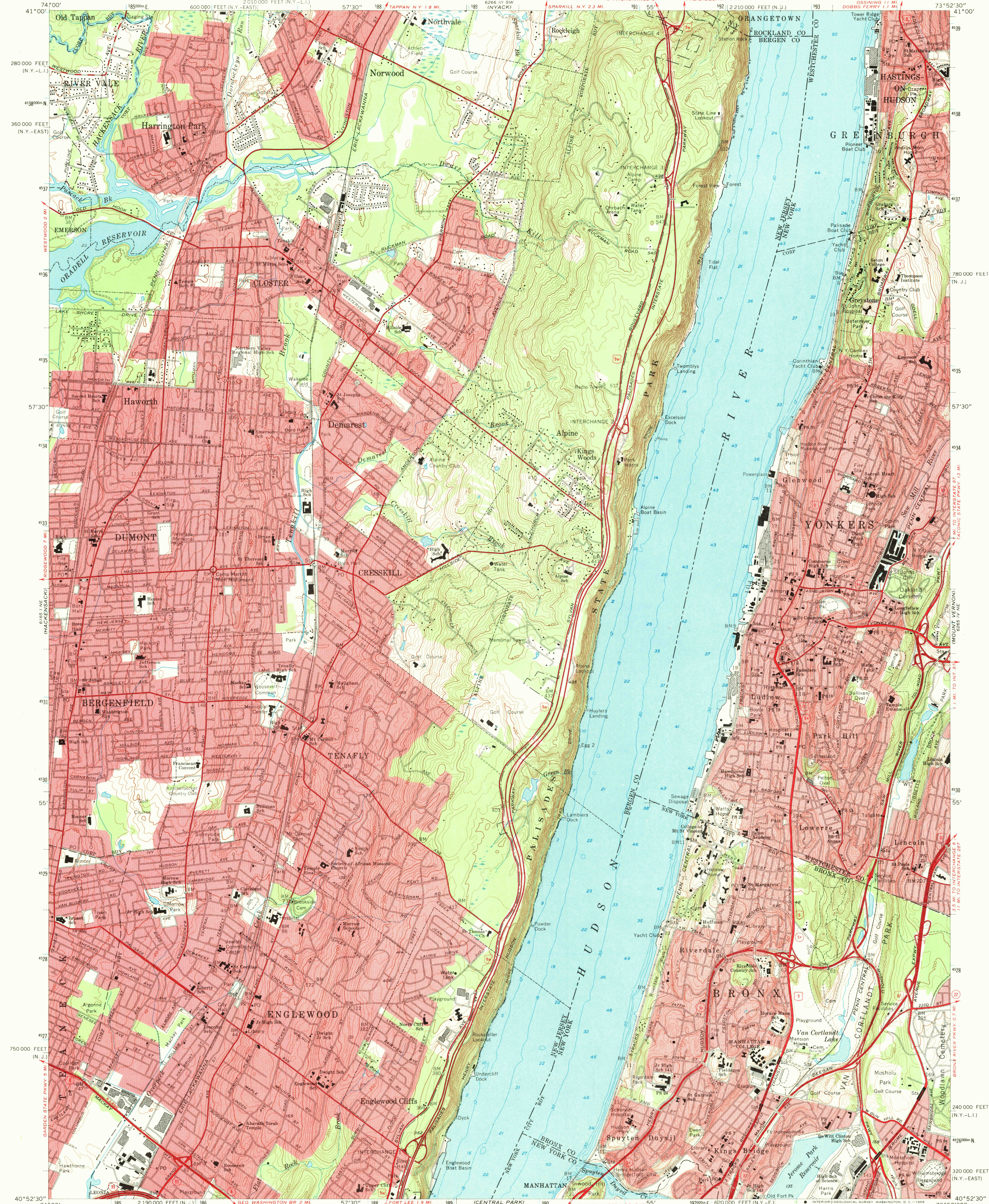
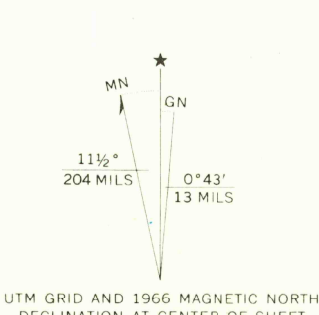


UNITED STATES  
DEPARTMENT OF THE INTERIOR  
GEOLOGICAL SURVEY

YONKERS, N.J.—N.Y.  
NEW JERSEY—NEW YORK  
7.5 MINUTE SERIES (TOPOGRAPHIC)  
NW/4 HARLEM 15 QUADRANGLE  
DOVER 15 QUADRANGLE  
DOVER 15 QUADRANGLE



Mapped, edited, and published by the Geological Survey  
New York area revised in cooperation with New York  
Department of Transportation  
Control by USGS, USC&GS, USCE, New Jersey Geodetic Survey,  
and City of New York Board of Estimate and Apportionment  
Topography by photogrammetric methods from aerial photographs  
taken 1954. Field checked 1956. Revised 1966  
Selected hydrographic data compiled from USC&GS Charts 747 and 748  
(1966). This information is not intended for navigational purposes  
Polyconic projection. 1927 North American datum.  
10,000-foot grids based on New Jersey coordinate system, and  
New York coordinate system, east and Long Island zones  
1000-meter Universal Transverse Mercator grid ticks,  
zone 18, shown in blue  
Red tint indicates areas in which only landmark buildings are shown



SCALE 1:24,000  
CONTOUR INTERVAL 10 FEET  
DATUM IS MEAN SEA LEVEL  
DEPTH CURVES AND SOUNDINGS IN FEET—DATUM IS MEAN LOW WATER  
SHORELINE SHOWN REPRESENTS THE APPROXIMATE LINE OF MEAN HIGH WATER  
THE MEAN RANGE OF TIDE IS APPROXIMATELY 3.7 FEET

THIS MAP COMPLIES WITH NATIONAL MAP ACCURACY STANDARDS  
FOR SALE BY U.S. GEOLOGICAL SURVEY, WASHINGTON, D.C. 20242  
A FOLDER DESCRIBING TOPOGRAPHIC MAPS AND SYMBOLS IS AVAILABLE ON REQUEST



ROAD CLASSIFICATION  
Heavy-duty ——— Light-duty ———  
Medium-duty ——— Unimproved dirt ———  
Interstate Route U.S. Route State Route  
YONKERS, N.J.—N.Y.  
NW/4 HARLEM 15 QUADRANGLE  
N4052.5—W7352.5/7.5  
1966  
AMS 6265 IV NW—SERIES V821  
U.S.G.S.  
FILE COPY  
TOPOGRAPHIC DIVISION  
USGS  
Historical File  
Topographic Division

10170