

# Newark

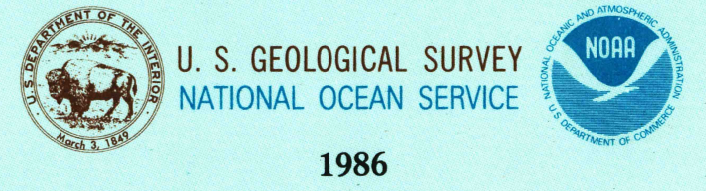
## NEW JERSEY-NEW YORK

1:100 000-scale metric  
topographic-bathymetric map



30 X 60 MINUTE QUADRANGLE  
SHOWING

- Contours and elevations in meters
- Highways, roads and other manmade structures
- Water features
- Woodland areas
- Geographic names
- Bathymetric contours in meters



Produced by the United States Geological Survey and the National Ocean Service  
Compiled from USGS 1:250,000-scale topographic maps dated 1970-1981  
Bathymetry compiled by the National Ocean Service from tide-contoured hydrographic surveys. This information is not intended for navigational purposes.  
How low water (dotted line) and mean high water (heavy solid line) compiled by NOS from tide-contoured aerial photographs. Apparent shoreline (outer edge of vegetation) shown by light solid line.  
Projection and 10,000-meter grid, zone 18, Universal Transverse Mercator 25,000-foot grid ticks based on New Jersey coordinate system, and New York coordinate system, Long Island area.  
1982 North American Datum  
To place on the projected North American Datum 1983, move the projection lines 6 meters south and 34 meters west.  
There may be private subdivisions within the boundaries of the National or State reservations shown on this map.

CONTOUR INTERVAL 20 METERS  
SUPPLEMENTARY CONTOUR INTERVAL 10 METERS  
NATIONAL GEODETIC VERTICAL DATUM OF 1929  
ELEVATIONS SHOWN TO THE NEAREST METERS  
BATHYMETRIC CONTOUR INTERVAL: 1 METERS WITH SUPPLEMENTARY 1 METER CONTOURS-MEAN LOW WATER DATUM  
THE RELATIONSHIP BETWEEN THE TWO DATUMS IS VARIABLE

BASIC MAP COMPLES WITH NATIONAL MAP ACCURACY STANDARDS. BATHYMETRIC SURVEY DATA COMPLES WITH INTERNATIONAL HYDROGRAPHIC ORGANIZATION (IHO) SPECIAL PUBLICATION 44 ACCURACY STANDARDS AND/OR STANDARDS USED AS OF THE DATE OF THE SURVEYS

CONVERSION TABLE		DECLINATION DIAGRAM		ADJOINING MAPS		
Meters	Feet	17° 12' 22" N		1	2	3
1	3.2808			4	5	
2	6.5617			6	7	8
3	9.8425					
4	13.1234					
5	16.4042					
6	19.6850					
7	22.9659					
8	26.2467					
9	29.5275					
10	32.8084					
To convert meters to feet multiply by 3.2808		UTM grid convergence (GN) and 100-magnetic declination (MD) at center of map. Diagram is approximate.				
To convert feet to meters multiply by 0.3048						

FOR SALE BY U. S. GEOLOGICAL SURVEY  
DENVER, COLORADO 80225, OR RESTON, VIRGINIA 20192  
AND NATIONAL OCEAN SERVICE, ROCKVILLE, MARYLAND 20852

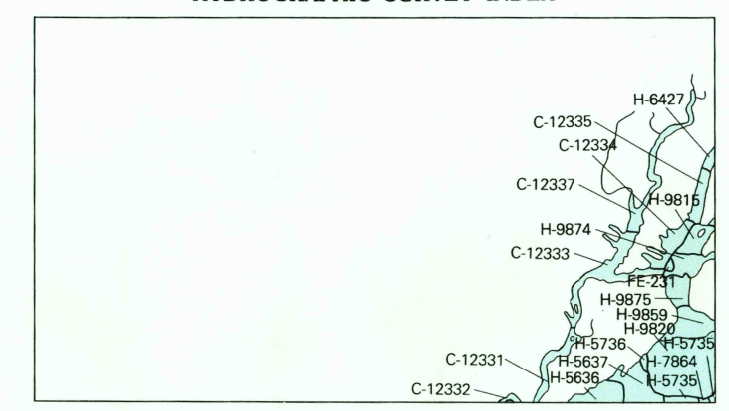
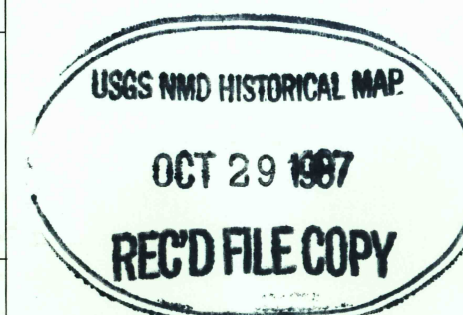
### Topographic Map Symbols

- Primary highway, hard surface
- Secondary highway, hard surface
- Light duty road, principal street, hard or improved surface
- Other road or street; trail
- Route marker: Interstate, U. S., State
- Relief: standard gap; narrow gage
- Bridge: overpass; underpass
- Tunnel: road; railroad
- Built up area; locality: elevation
- Airport; landing field; landing strip
- National boundary
- State boundary
- County boundary
- National or State reservation boundary
- Land grant boundary
- U. S. public lands survey: range, township, section
- Ramps, township, section line: protected
- Power transmission line: pipeline
- Dam; dam with lock
- Cemetery; building
- Windmill; water well; spring
- Mine shaft; adit or cave; mine; quarry; gravel pit
- Campground; picnic area; U. S. location monument
- Rail; cliff dwelling
- Quarried surface; strip mine; low; sand
- Contours: index; intermediate; supplementary
- Bathymetric contours: index; intermediate
- Stream, lake: perennial; intermittent
- Rapids, large and small; falls, large and small
- Area to be submerged; marsh; swamp
- Land subject to controlled inundation; woodland
- Scrub; mangrove
- Orchard; vineyard

A pamphlet describing topographic maps is available on request

HYDROGRAPHIC SURVEY INFORMATION			
SURVEY NUMBER	SURVEY DATE	SCALE	SURVEY LINE SPACING (NAUTICAL MILES)
H-5826	1934	1:10,000	01.02
H-5827	1934	1:10,000	01.02
H-5726	1934	1:25,000	04.00
H-5728	1934	1:25,000	04.00
H-5827	1939	1:10,000	01.04
H-1384	1960	1:10,000	02.10
H-5829	1970	1:10,000	03.08
H-5830	1970	1:10,000	03.10
H-5816	1980	1:10,000	02.10
H-5875	1980	1:10,000	02.10
FE-221	1981	1:5,000	01.02

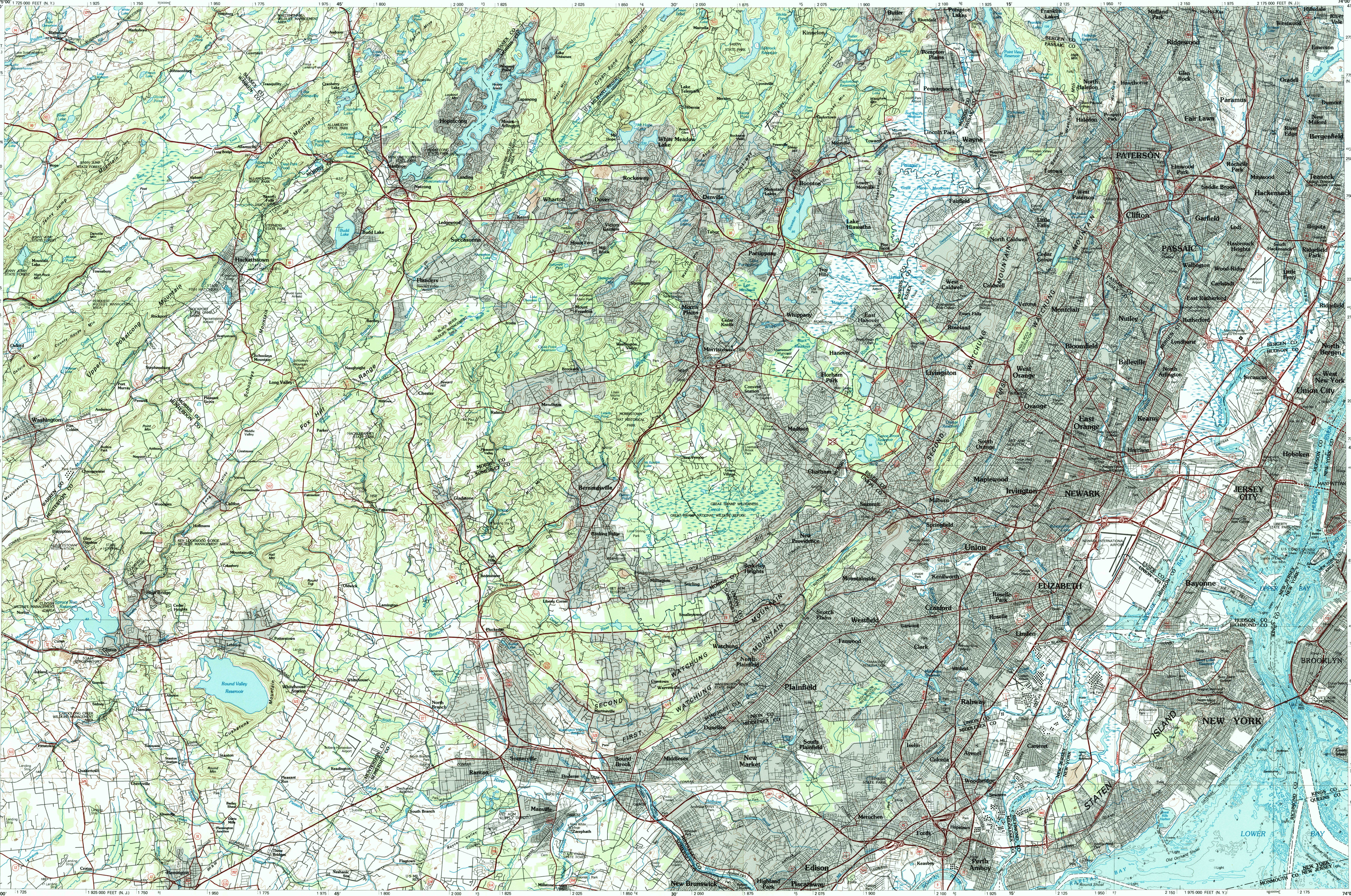
HYDROGRAPHIC SURVEY INDEX			
SURVEY NUMBER	SURVEY DATE	SCALE	SURVEY LINE SPACING (NAUTICAL MILES)
NOS CHART 12331	1981	1:16,000	01.02
NOS CHART 12332	1979	1:25,000	04.00
NOS CHART 12333	1980	1:10,000	01.04
NOS CHART 12334	1981	1:10,000	01.04
NOS CHART 12335	1980	1:10,000	01.04
NOS CHART 12337	1980	1:16,000	01.02



Photographic copies of the above and prior surveys may be obtained at the cost of reproduction by addressing the Director, NCEC 243 National Ocean Service, National Oceanic and Atmospheric Administration, Rockville, Maryland 20852

## NEWARK, NEW JERSEY-NEW YORK

30 X 60 MINUTE SERIES (TOPOGRAPHIC-BATHYMETRIC)



SCALE 1:100 000  
1 CENTIMETER ON THE MAP REPRESENTS 1 KILOMETER ON THE GROUND  
CONTOUR INTERVAL 20 METERS  
SUPPLEMENTARY CONTOUR INTERVAL 10 METERS

NEWARK, NEW JERSEY-NEW YORK  
40074-E1-TB-100  
1986