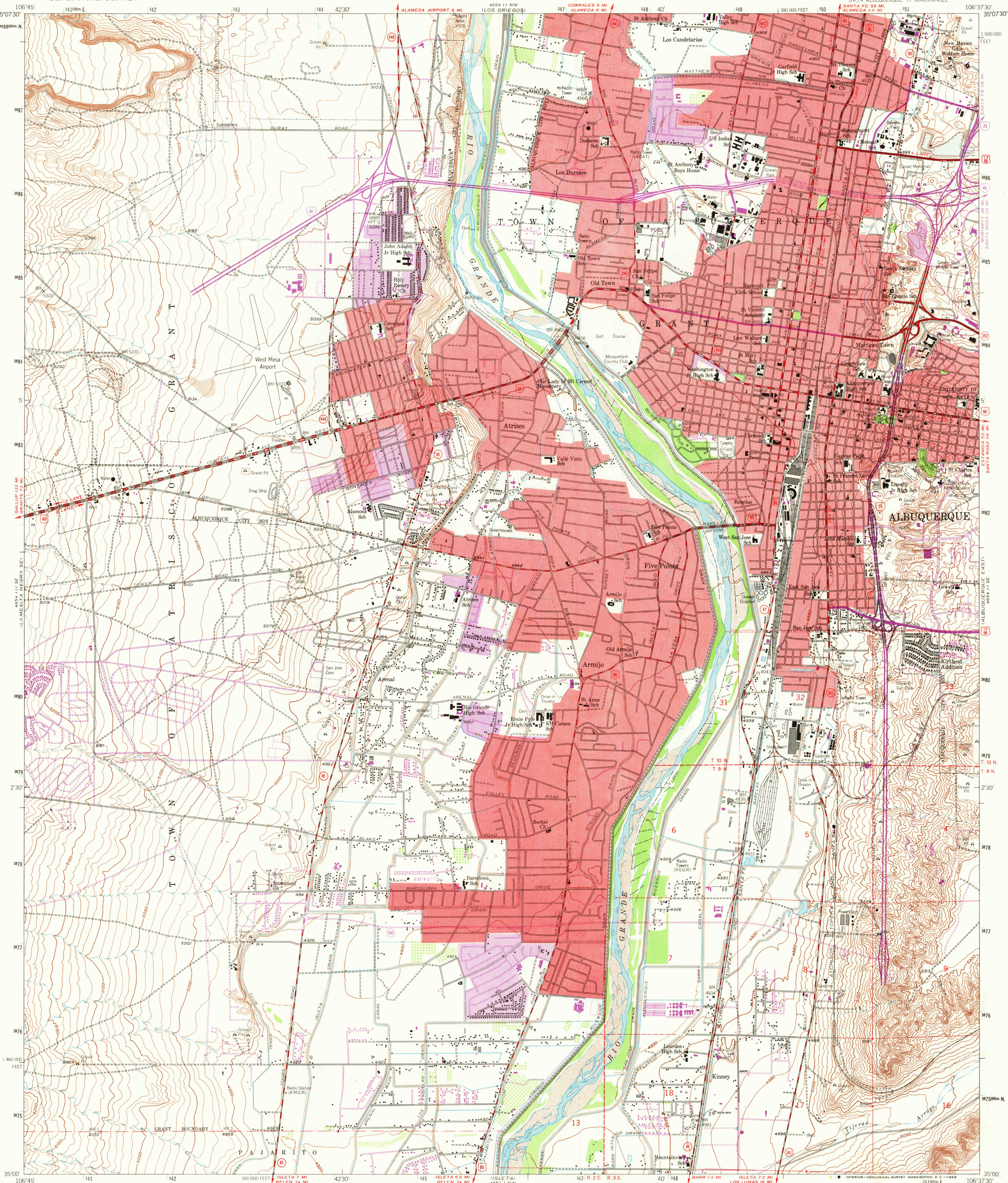


UNITED STATES
DEPARTMENT OF THE INTERIOR
GEOLOGICAL SURVEY

ALBUQUERQUE WEST QUADRANGLE
NEW MEXICO-BERNALILLO CO.
7.5 MINUTE SERIES (TOPOGRAPHIC)
SW 1/4 ALBUQUERQUE 15' QUADRANGLE

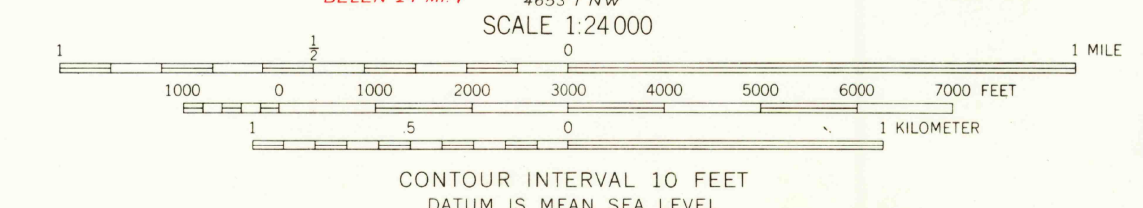


Mapped, edited, and published by the Geological Survey
Control by USGS and USC&GS
Culture and drainage in part compiled from aerial photographs
taken 1959. Topography by planetable surveys 1954. Revised 1960
Polyconic projection. 1927 North American datum
10,000-foot grid based on New Mexico coordinate system, central zone
1000-meter Universal Transverse Mercator grid ticks,
zone 13, shown in blue

Red tint indicates areas in which only landmark buildings are shown
East boundary Pajarito Grant, east boundary Town of Atrisco Grant,
and west boundary Town of Albuquerque Grant adjacent to
Rio Grande omitted because of insufficient data

Revisions shown in purple compiled by the Geological Survey from
aerial photographs taken 1967. This information not field checked
Purple tint indicates extension of urban areas

UTM GRID AND 1967 MAGNETIC NORTH
DECLINATION AT CENTER OF SHEET



THIS MAP COMPLIES WITH NATIONAL MAP ACCURACY STANDARDS
FOR SALE BY U. S. GEOLOGICAL SURVEY, DENVER, COLORADO 80225, OR WASHINGTON, D. C. 20242
A FOLDER DESCRIBING TOPOGRAPHIC MAPS AND SYMBOLS IS AVAILABLE ON REQUEST

USGS
Historical File
Topographic Division

NEW MEXICO
QUADRANGLE
FILE COPY
TOPOGRAPHIC DIVISION

ROAD CLASSIFICATION
Heavy-duty ——— Light-duty ———
Medium-duty ——— Unimproved dirt ———
Interstate Route U.S. Route State Route

ALBUQUERQUE WEST, N. MEX.
SW 1/4 ALBUQUERQUE 15' QUADRANGLE
N3500-W10637.5/7.5

1960
PHOTOREVISED 1967
AMS 4654 11 SW - SERIES V881

FEB 25 1969

3470