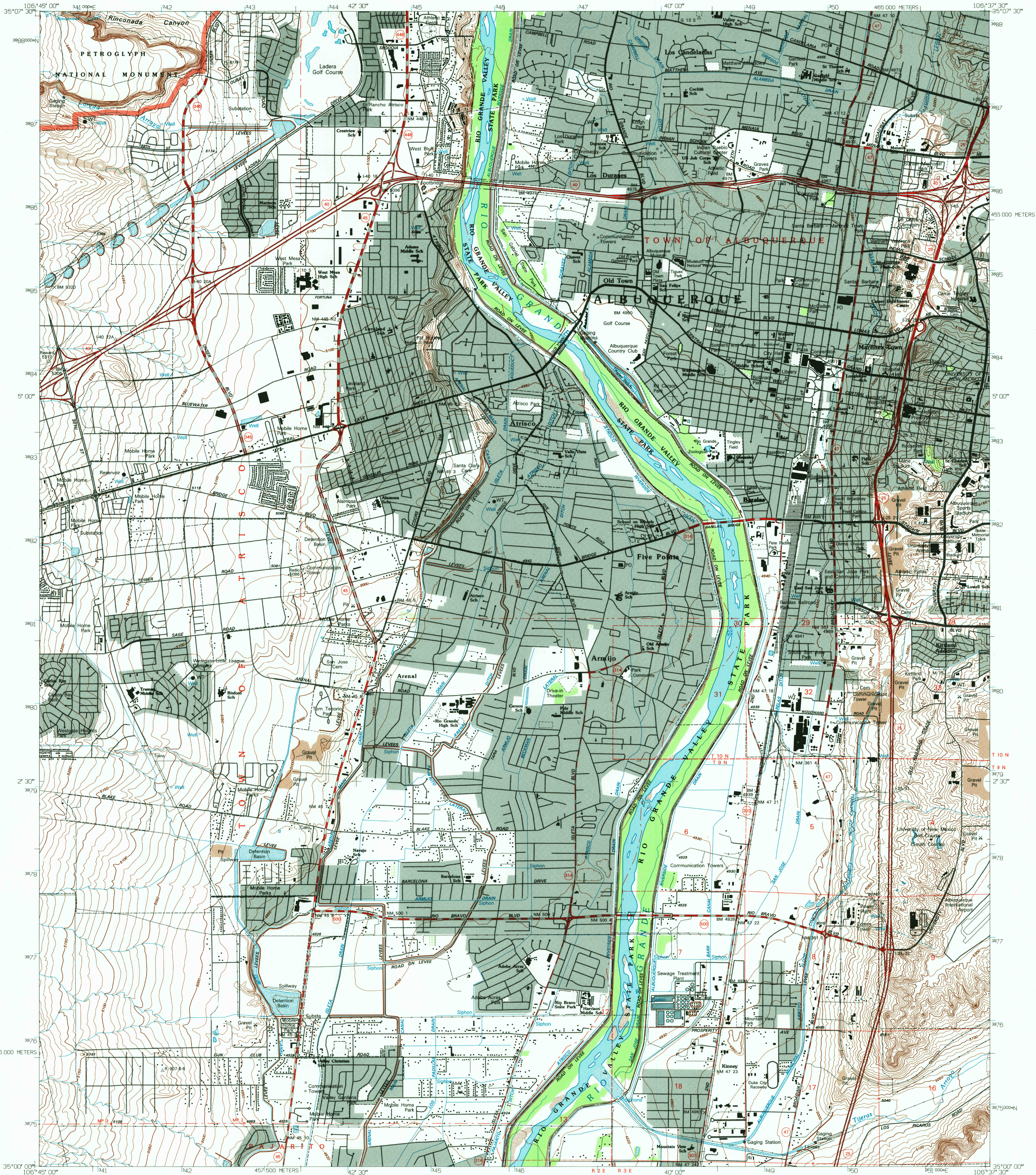


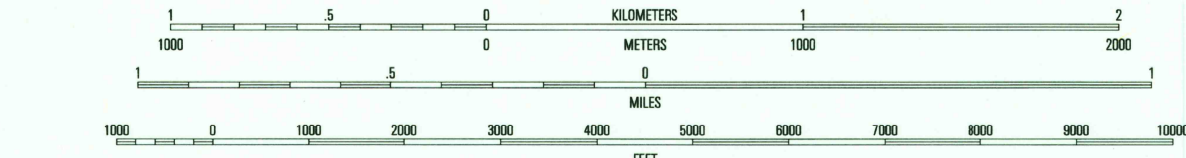
UNITED STATES
DEPARTMENT OF THE INTERIOR
GEOLOGICAL SURVEY

ALBUQUERQUE WEST QUADRANGLE
NEW MEXICO-BERNALILLO CO.
7.5-MINUTE SERIES (TOPOGRAPHIC)



Produced by the United States Geological Survey
Compiled from imagery dated 1959. Revised from imagery
dated 1990. PLSS and survey control current as of 1993.
Contours and elevations current as of 1994.
Map edited 1996
North American Datum of 1983 (NAD 83). Projection and
blue 1000-meter ticks: Universal Transverse Mercator, zone 13
2500-meter ticks: New Mexico Coordinate System of 1983 (central zone)
North American Datum of 1927 (NAD 27) is shown by dashed
corner ticks. The values of the shift between NAD 83 and NAD 27
for 7.5-minute intersections are obtainable from National Geodetic
Survey NADCON software
There may be private inholdings within the boundaries of
the National or State reservations shown on this map

UTM GRID AND 1996 MAGNETIC NORTH
DECLINATION AT CENTER OF SHEET
0° 58' 17" N
11° 19' 56" N



APR 30 1997
REC'D FILE COPY

CONTOUR INTERVAL 10 FEET
NATIONAL GEODETIC VERTICAL DATUM OF 1929

THIS MAP COMPLIES WITH NATIONAL MAP ACCURACY STANDARDS
FOR SALE BY U.S. GEOLOGICAL SURVEY
DENVER, COLORADO 80225, OR RESTON, VIRGINIA 22092
A FOLDER DESCRIBING TOPOGRAPHIC MAPS AND SYMBOLS IS AVAILABLE ON REQUEST

ROAD CLASSIFICATION
Primary highway
hard surface
Secondary highway
hard surface
Light-duty road, hard or
improved surface
Unimproved road
Interstate Route
U.S. Route
State Route

QUADRANGLE LOCATION

| | | | | | | | |
|-----------------|--------------|-----------|--------------------|--------------------|-------------|---------|------------------|
| 1 | 2 | 3 | 4 | 5 | 6 | 7 | 8 |
| 1 The Volcanoes | 2 Los Grupos | 3 Alameda | 4 La Mesa Negra SE | 5 Albuquerque East | 6 Wind Mesa | 7 Ideta | 8 Hubbell Spring |

ALBUQUERQUE WEST, NM
35106-A6-TF-024
1990

DMA 4654 II SW-SERIES V881

