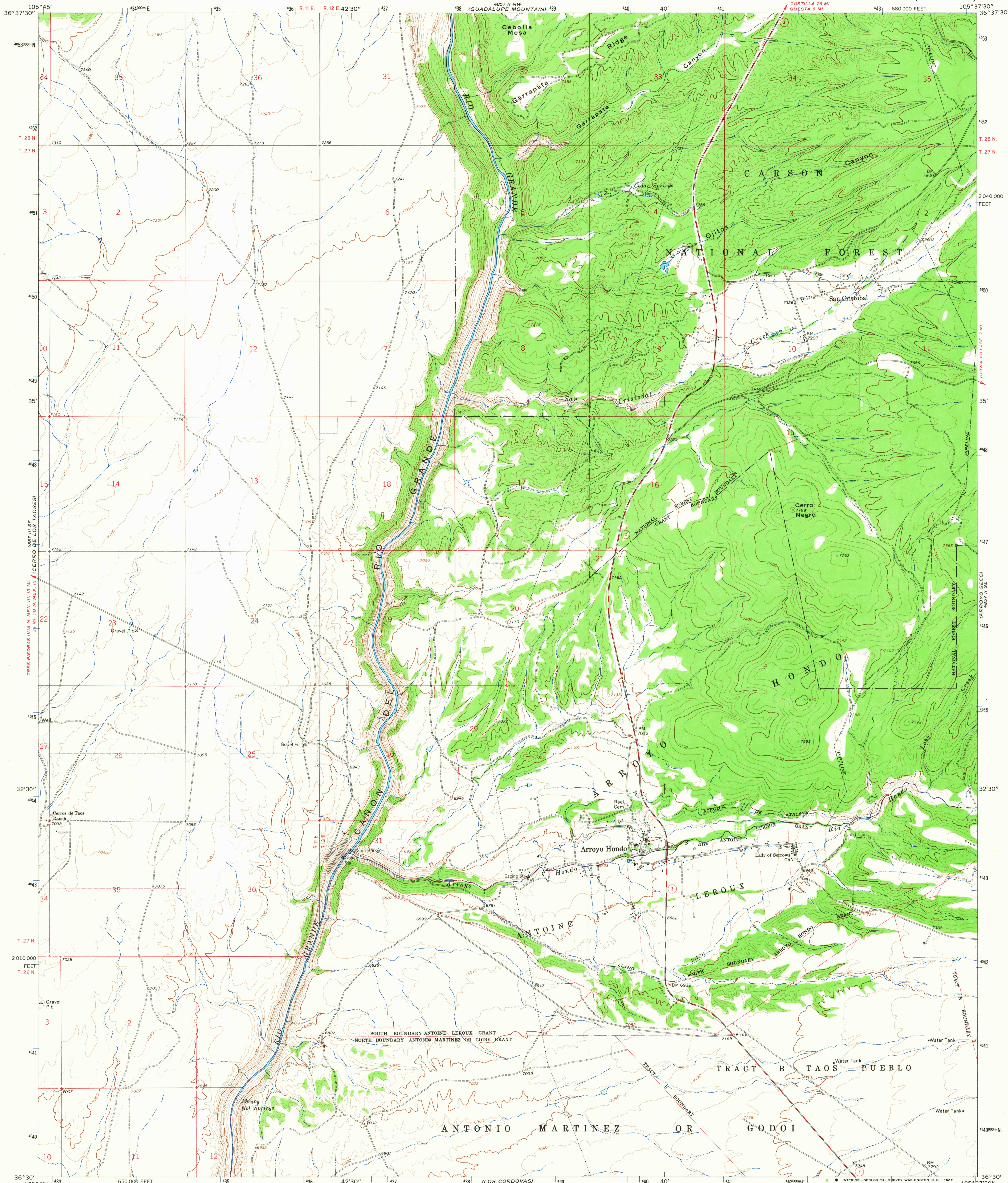


UNITED STATES
DEPARTMENT OF THE INTERIOR
GEOLOGICAL SURVEY

ARROYO HONDO QUADRANGLE
NEW MEXICO—TAOS CO.
7.5 MINUTE SERIES (TOPOGRAPHIC)



Mapped, edited, and published by the Geological Survey

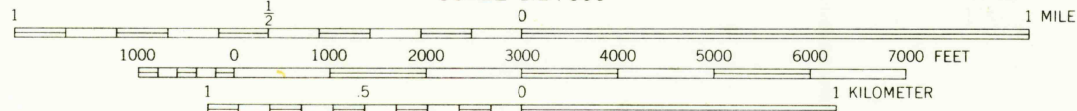
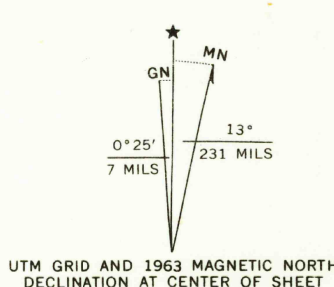
Control by USGS and USC&GS

Topography by photogrammetric methods from aerial
photographs taken 1962. Field checked 1963

Polyconic projection. 1927 North American datum
10,000-foot grid based on New Mexico coordinate system, central zone
1000-meter Universal Transverse Mercator grid ticks,
zone 13, shown in blue

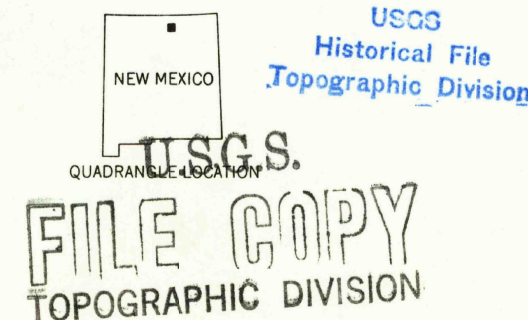
Fine red dashed lines indicate selected fence lines

Where omitted, land lines have not been established



CONTOUR INTERVAL 40 FEET
DOTTED LINES REPRESENT 20-FOOT CONTOURS
DATUM IS MEAN SEA LEVEL

THIS MAP COMPLIES WITH NATIONAL MAP ACCURACY STANDARDS
FOR SALE BY U.S. GEOLOGICAL SURVEY, DENVER, COLORADO 80225, OR WASHINGTON, D. C. 20242
A FOLDER DESCRIBING TOPOGRAPHIC MAPS AND SYMBOLS IS AVAILABLE ON REQUEST



ROAD CLASSIFICATION
Medium-duty ——— Light-duty ———
Unimproved dirt ——— State Route ———

ARROYO HONDO, N. MEX.
N3630—W10537.5/7.5

1963

AMS 4857 II SW—SERIES V881

2595