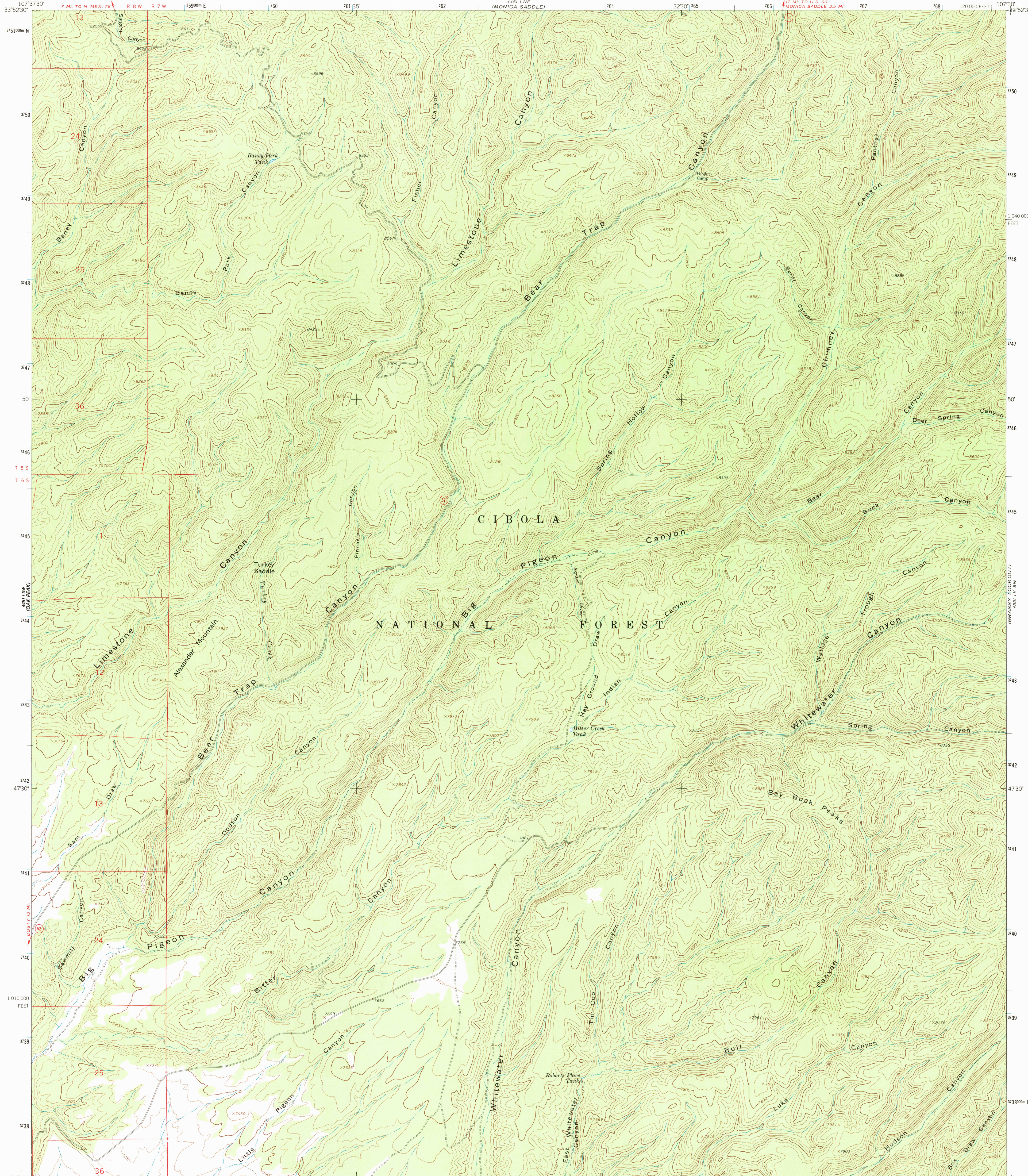


NE 1/4 NW 1/4  
MONICA SADDLE

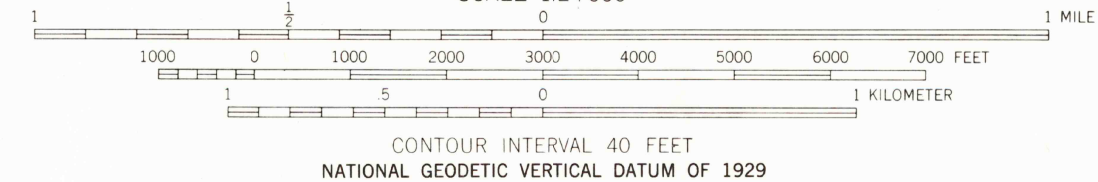
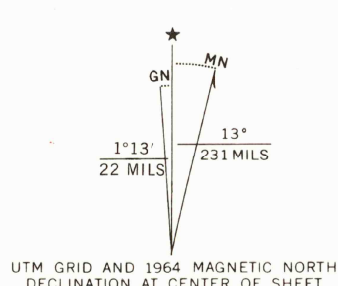
UNITED STATES  
DEPARTMENT OF THE INTERIOR  
GEOLOGICAL SURVEY

BAY BUCK PEAKS QUADRANGLE  
NEW MEXICO-SOCORRO CO.  
7.5 MINUTE SERIES (TOPOGRAPHIC)

NE 1/4 NW 1/4  
MONICA SADDLE



Map by the U.S. Forest Service  
Edited and published by the Geological Survey  
Control by USGS, USC&GS, and U.S. Forest Service  
Topography by photogrammetric methods from aerial  
photographs taken 1960. Field checked by USGS 1964  
Polyconic projection: 1927 North American Datum  
10,000-foot grid based on New Mexico coordinate system, central zone  
1000-meter Universal Transverse Mercator grid ticks,  
zone 13, shown in blue  
Certain land lines are omitted because of insufficient data  
To place on the predicted North American Datum 1983  
move the projection lines 4 meters south and  
54 meters east as shown by dashed corner ticks  
There may be private inholdings within the boundaries  
of the National or State reservations shown on this map



THIS MAP COMPLIES WITH NATIONAL MAP ACCURACY STANDARDS  
FOR SALE BY U.S. GEOLOGICAL SURVEY, DENVER, COLORADO 80225, OR RESTON, VIRGINIA 22092  
A FOLDER DESCRIBING TOPOGRAPHIC MAPS AND SYMBOLS IS AVAILABLE ON REQUEST



ROAD CLASSIFICATION  
Light duty —————  
Unimproved dirt ————  
State Route

BAY BUCK PEAKS, N. MEX.  
33107-G5-TF-024  
1964

DMA 4451 I SE-SERIES V881