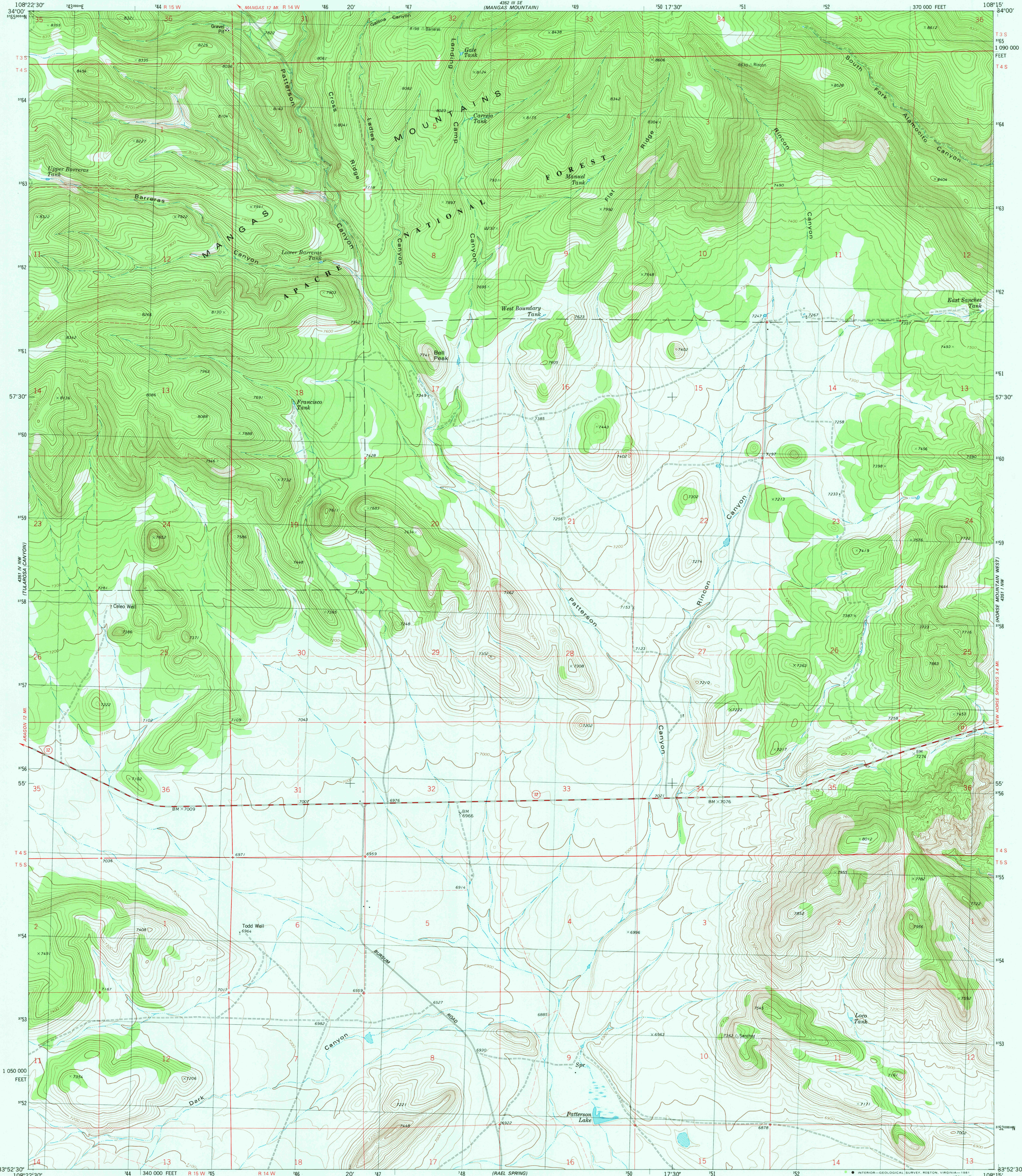
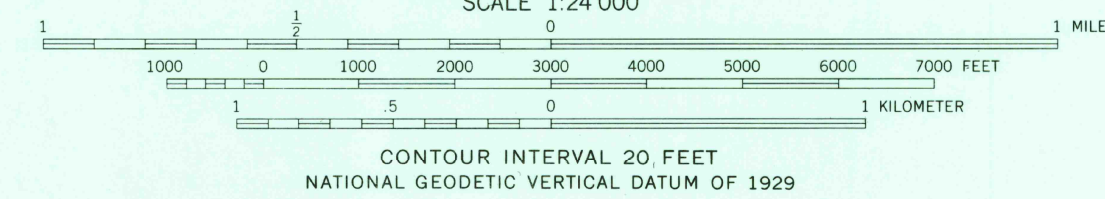
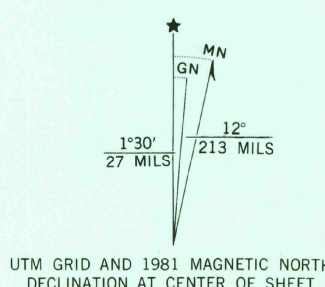


UNITED STATES  
DEPARTMENT OF THE INTERIOR  
GEOLOGICAL SURVEY

BELL PEAK QUADRANGLE  
NEW MEXICO—CATRON CO.  
7.5 MINUTE SERIES (TOPOGRAPHIC)



Mapped, edited, and published by the Geological Survey  
Control by USGS, NOS/NOAA, and U.S. Forest Service  
Topography by photogrammetric methods from aerial photographs  
taken 1974. Field checked 1975. Map edited 1981  
Projection and 10,000-foot grid ticks: New Mexico  
coordinate system, west zone (transverse Mercator)  
1000-meter Universal Transverse Mercator grid, zone 12  
1927 North American datum  
To place on the predicted North American Datum 1983  
move the projection lines 3 meters south and  
56 meters east as shown by dashed corner ticks  
Fine red dashed lines indicate selected fence lines  
There may be private inholdings within the boundaries of the  
National or State reservations shown on this map



ROAD CLASSIFICATION  
Primary highway, hard surface ——— Light-duty road, hard or improved surface  
Secondary highway, hard surface ——— Unimproved road  
Interstate Route ——— U. S. Route ——— State Route

USGS  
HISTORICAL FILE  
NATIONAL MAPPING DIVISION

BELL PEAK, N. MEX.  
N3352.5-W10815/7.5  
1981  
DMA 4351 IV NE-SERIES V881

AUG 13 1981  
1980