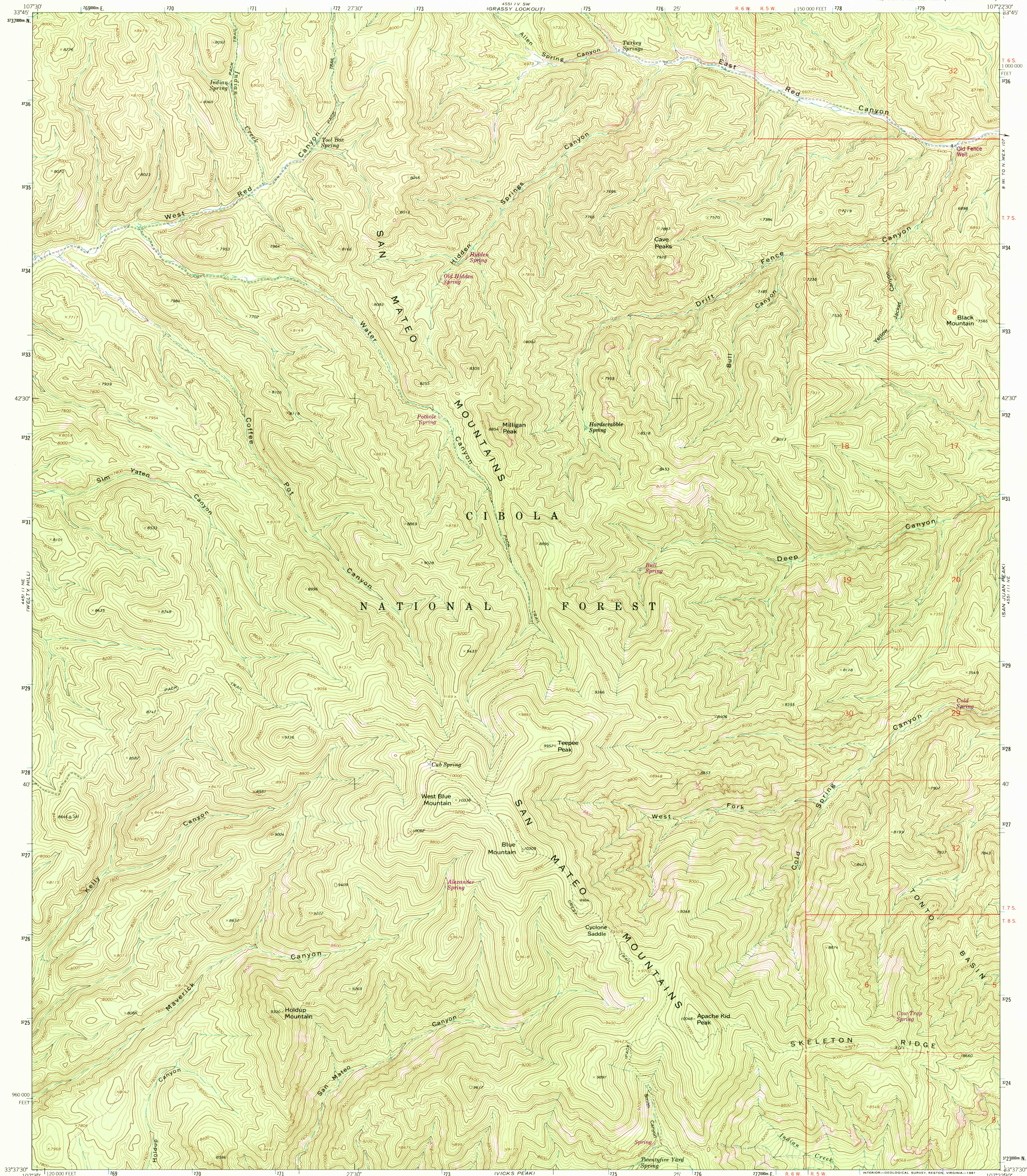


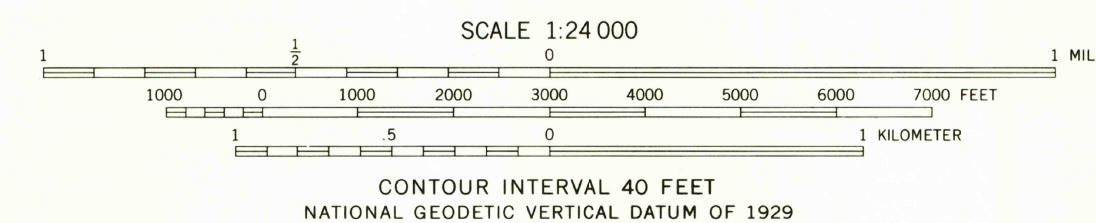
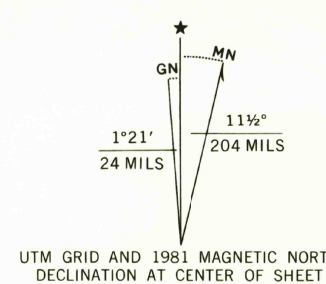
UNITED STATES
DEPARTMENT OF THE INTERIOR
GEOLOGICAL SURVEY

BLUE MOUNTAIN QUADRANGLE
NEW MEXICO-SOCORRO CO.
7.5 MINUTE SERIES (TOPOGRAPHIC)

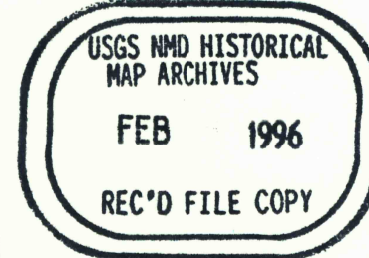


Maped by the U. S. Forest Service
Edited and published by the Geological Survey
Control by USGS, NOS/NOAA, and U. S. Forest Service
Topography by photogrammetric methods from aerial
photographs taken 1960. Field checked by USGS 1964
Polyconic projection. 1927 North American datum
10,000-foot grid based on New Mexico coordinate system, central zone
1000 meter Universal Transverse Mercator grid ticks,
zone 13, shown in blue
Certain land lines are omitted because of insufficient data

To place on the predicted North American Datum 1983
move the projection lines 4 meters south and
54 meters east as shown by dashed corner ticks
There may be private inholdings within the boundaries of
the National or State reservations shown on this map



THIS MAP COMPLIES WITH NATIONAL MAP ACCURACY STANDARDS
FOR SALE BY U. S. GEOLOGICAL SURVEY, DENVER, COLORADO 80225, OR RESTON, VIRGINIA 22092
A FOLDER DESCRIBING TOPOGRAPHIC MAPS AND SYMBOLS IS AVAILABLE ON REQUEST



ROAD CLASSIFICATION
Unimproved dirt =-----

BLUE MOUNTAIN, N. MEX.
N3337.5-W10722.5/7.5

1964
DMA 4551 III NW-SERIES V881

Revisions shown in purple compiled by the U. S. Forest Service
from aerial photographs taken 1976 and other source data
This information not field checked. Map edited by the
Geological Survey 1981

