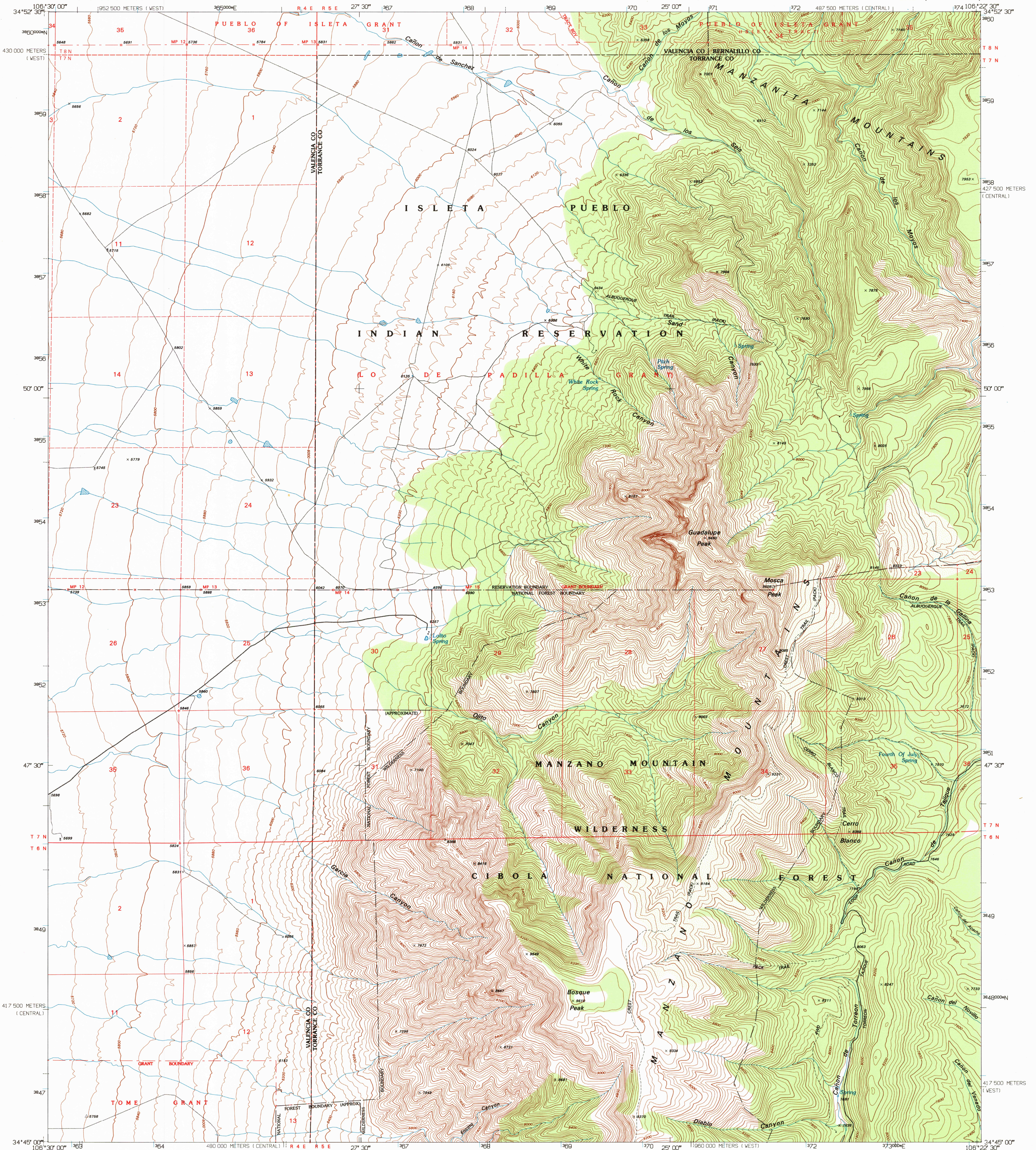
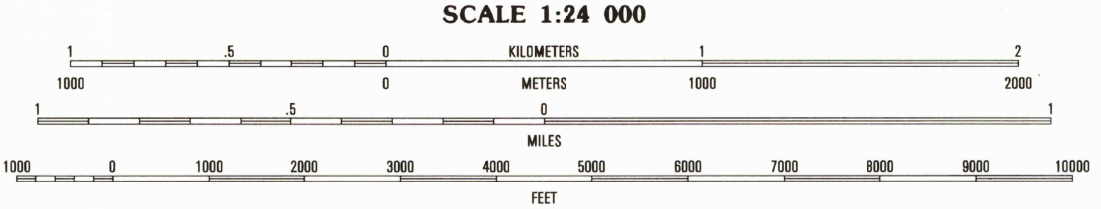
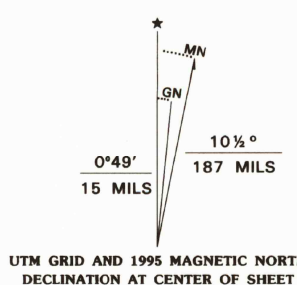


UNITED STATES
DEPARTMENT OF THE INTERIOR
GEOLOGICAL SURVEY

BOSQUE PEAK QUADRANGLE
NEW MEXICO
7.5-MINUTE SERIES (TOPOGRAPHIC)



Produced by the United States Geological Survey
Compiled from imagery dated 1951. Revised from imagery dated 1991. PLSS and survey control current as of 1954. Contours and elevations current as of 1951. Map edited 1995.
North American Datum of 1983 (NAD 83). Projection and blue 1000-meter ticks: Universal Transverse Mercator, zone 13. 2500-meter ticks: New Mexico Coordinate System of 1983, central zone.
North American Datum of 1927 (NAD 27) is shown by dashed corner ticks. The values of the shift between NAD 83 and NAD 27 for 7.5-minute intersections are obtainable from National Geodetic Survey NADCON software.
There may be private inholdings within the boundaries of the National or State reservations shown on this map. Certain land lines are omitted because of insufficient data.



CONTOUR INTERVAL 40 FEET
NATIONAL GEODETIC VERTICAL DATUM OF 1929

THIS MAP COMPLIES WITH NATIONAL MAP ACCURACY STANDARDS
FOR SALE BY U.S. GEOLOGICAL SURVEY
DENVER, COLORADO 80225, OR RESTON, VIRGINIA 22092
A FOLDER DESCRIBING TOPOGRAPHIC MAPS AND SYMBOLS IS AVAILABLE ON REQUEST



QUADRANGLE LOCATION

1	2	3
4	5	6
7	8	9

1 Hubbell Spring
2 Mount Washington
3 Escobedo
4 Los Lunas SE
5 Talque
6 Tame NE
7 Capilla Peak
8 Torreon

U.S. GEOLOGICAL SURVEY
MAP ARCHIVES
MAR 14 1996

ROAD CLASSIFICATION
Primary highway hard surface
Secondary highway hard surface
Light-duty road, hard or improved surface
Unimproved road
Interstate Route U.S. Route State Route

BOSQUE PEAK, NM
34106-G4-TF-024
1991
DMA 4753 IV SW-SERIES V881

