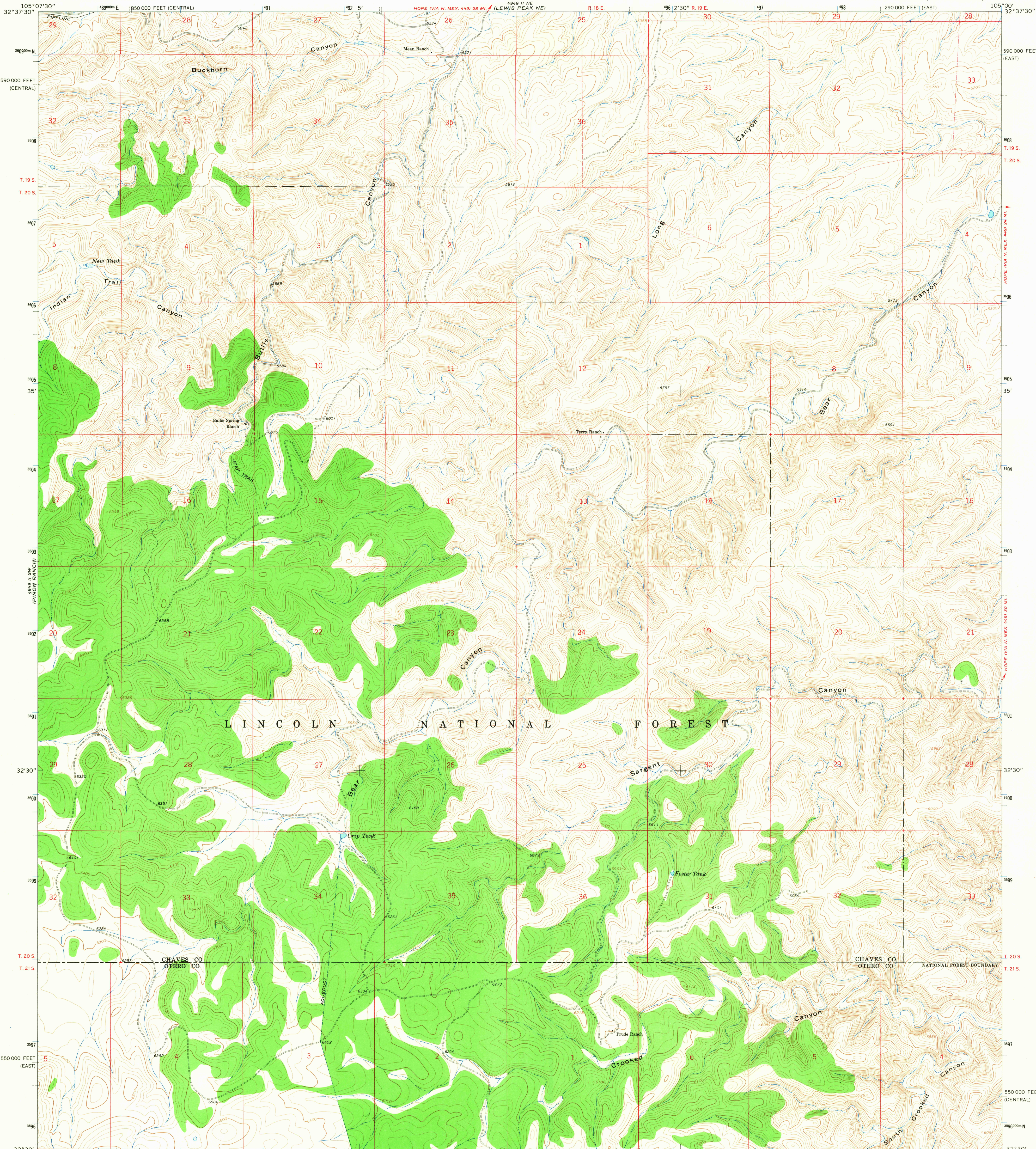


UNITED STATES
DEPARTMENT OF THE INTERIOR
GEOLOGICAL SURVEY

BULLIS SPRING RANCH QUADRANGLE
NEW MEXICO
7.5 MINUTE SERIES (TOPOGRAPHIC)

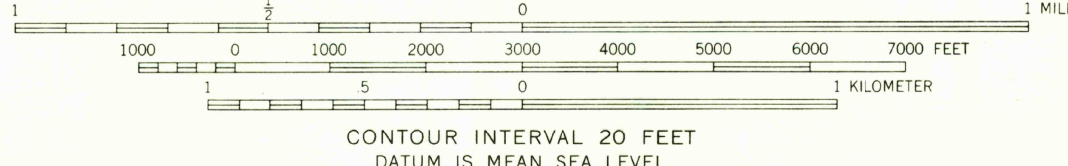
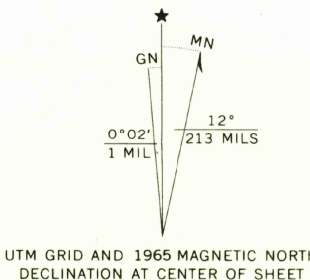


Mapped, edited, and published by the Geological Survey

Control by USGS and USC&GS

Topography by photogrammetric methods from aerial photographs taken 1964. Field checked 1965

Polyconic projection. 1927 North American datum
10,000-foot grids based on New Mexico coordinate system,
east and central zones
1000-meter Universal Transverse Mercator grid ticks,
zone 13, shown in blue
Fine red dashed lines indicate selected fence lines



U.S.G.S.
FILE COPY
TOPOGRAPHIC DIVISION

QUADRANGLE LOCATION

ROAD CLASSIFICATION
Light-duty ————— Unimproved dirt —————

BULLIS SPRING RANCH, N. MEX.
N3230—W10500/7.5

1965

AMS 4949 II SE—SERIES V881

THIS MAP COMPLIES WITH NATIONAL MAP ACCURACY STANDARDS
FOR SALE BY U. S. GEOLOGICAL SURVEY, DENVER, COLORADO 80225, OR WASHINGTON, D. C. 20242
A FOLDER DESCRIBING TOPOGRAPHIC MAPS AND SYMBOLS IS AVAILABLE ON REQUEST

2850
FEB 9 1968