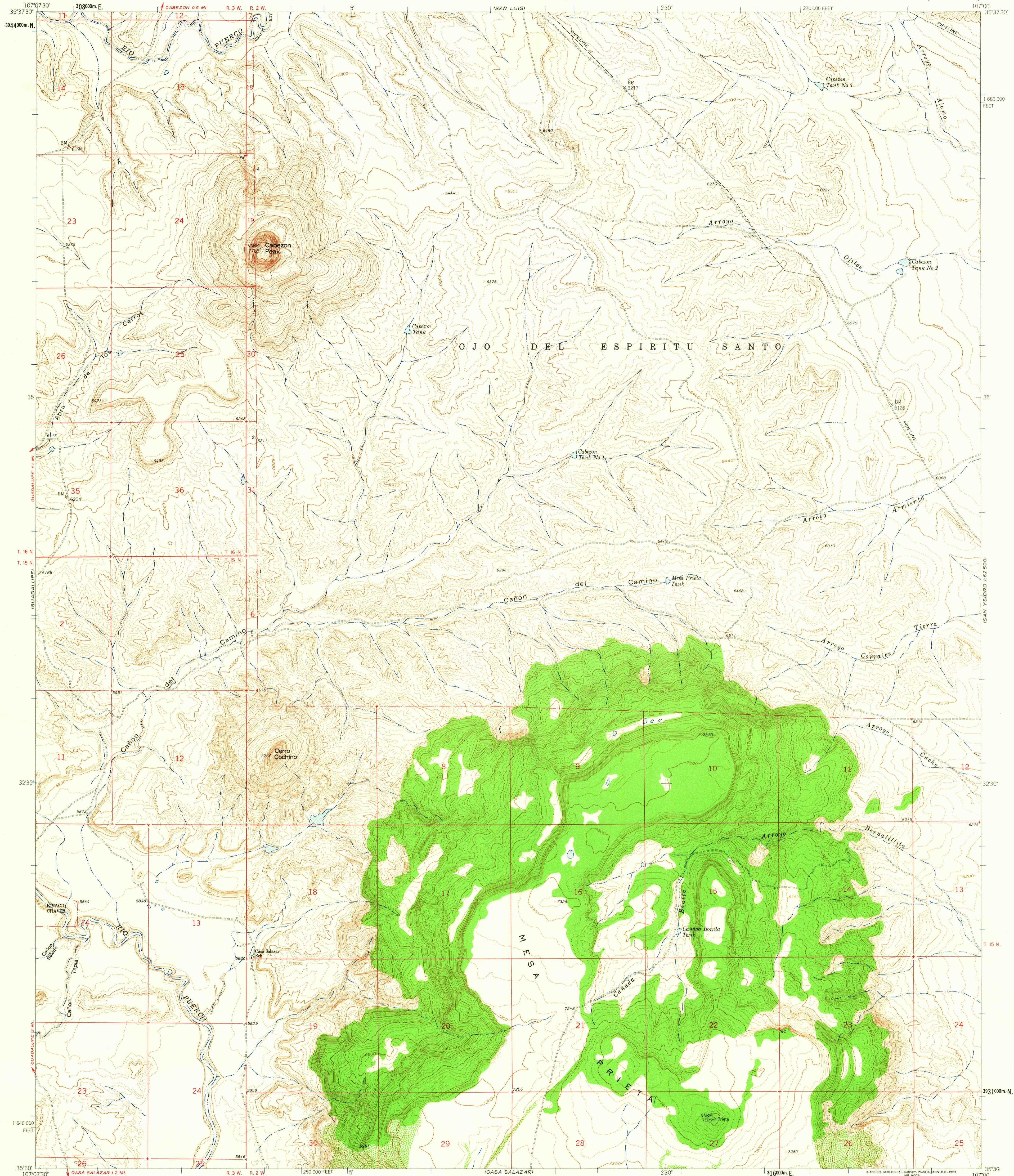


UNITED STATES
DEPARTMENT OF THE INTERIOR
GEOLOGICAL SURVEY

CABEZON PEAK QUADRANGLE
NEW MEXICO-SANDOVAL CO.
7.5 MINUTE SERIES (TOPOGRAPHIC)

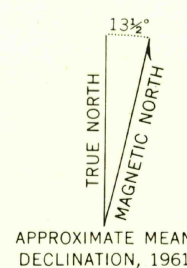


Mapped, edited, and published by the Geological Survey

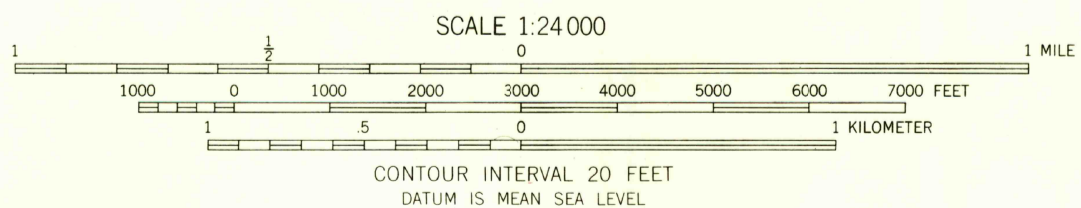
Control by USGS and USC&GS

Topography by photogrammetric methods from aerial
photographs taken 1958. Field checked 1961

Polycyclic projection. 1927 North American datum
10,000-foot grid based on New Mexico coordinate system, central zone
1000-meter Universal Transverse Mercator grid ticks,
zone 13, shown in blue



APPROXIMATE MEAN
DECLINATION, 1961



CONTOUR INTERVAL 20 FEET
DATUM IS MEAN SEA LEVEL



QUADRANGLE LOCATION

ROAD CLASSIFICATION

Unimproved dirt

THIS MAP COMPLIES WITH NATIONAL MAP ACCURACY STANDARDS
FOR SALE BY U.S. GEOLOGICAL SURVEY, DENVER 25, COLORADO OR WASHINGTON 25, D.C.
A FOLDER DESCRIBING TOPOGRAPHIC MAPS AND SYMBOLS IS AVAILABLE ON REQUEST

USGS
Historical File
Topographic Division

CABEZON PEAK, N. MEX.
N3530-W10700/7.5
1961

2110

SEP 12 1963

ISKY VILLAGE NW1