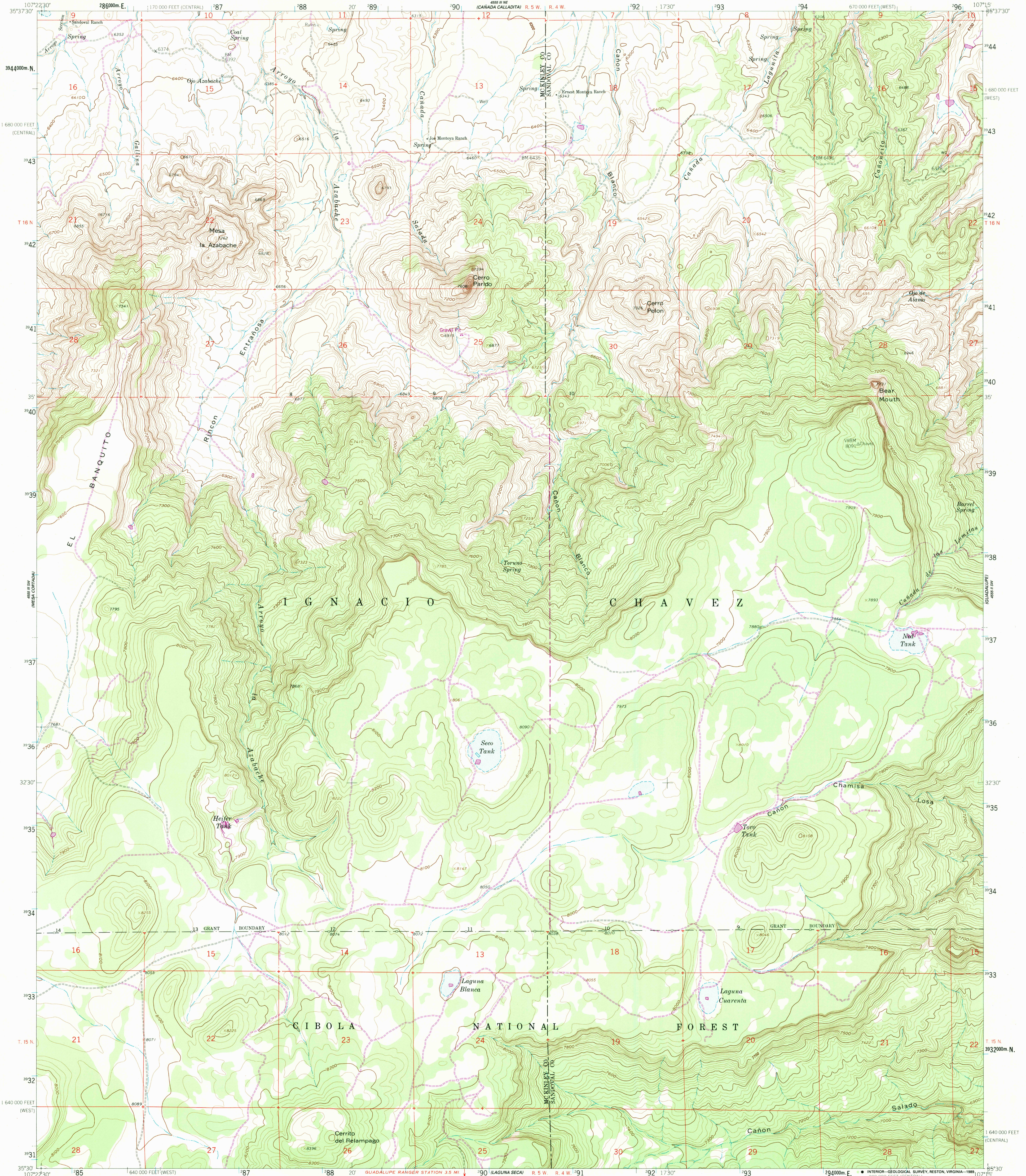


UNITED STATES
DEPARTMENT OF THE INTERIOR
GEOLOGICAL SURVEY

CERRO PARIDO QUADRANGLE
NEW MEXICO
7.5 MINUTE SERIES (TOPOGRAPHIC)



Mapped, edited, and published by the Geological Survey

Control by USGS and USC&GS

Topography by photogrammetric methods from aerial photographs taken 1958. Field checked 1961

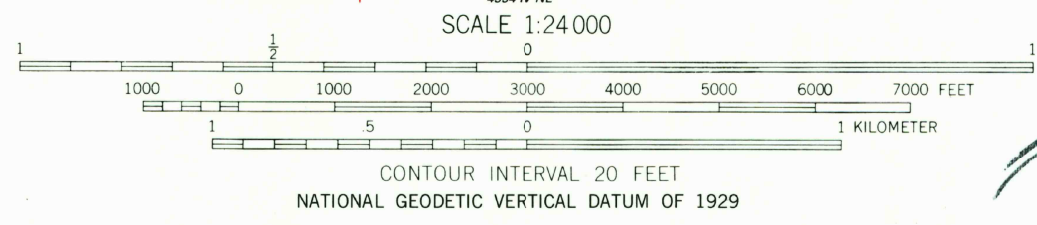
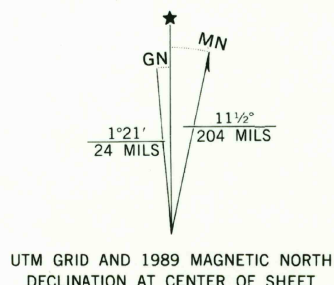
Polyconic projection. 1927 North American Datum
10,000-foot grid ticks based on New Mexico coordinate system,
west and central zones

1000-meter Universal Transverse Mercator grid ticks,
zone 13, shown in blue

To place on the predicted North American Datum 1983
move the projection lines 54 meters east as shown by
dashed corner ticks

There may be private inholdings within the boundaries
of the National or State reservations shown on this map

Revisions shown in purple and woodland compiled from aerial
photographs taken 1981 and other sources; this information
not field checked. Map edited 1989



ROAD CLASSIFICATION
Unimproved dirt -----

CERRO PARIDO, N. MEX.
35107-E3-TF-024

1961
PHOTOREVISED 1989
DMA 4555 III SE--SERIES V881