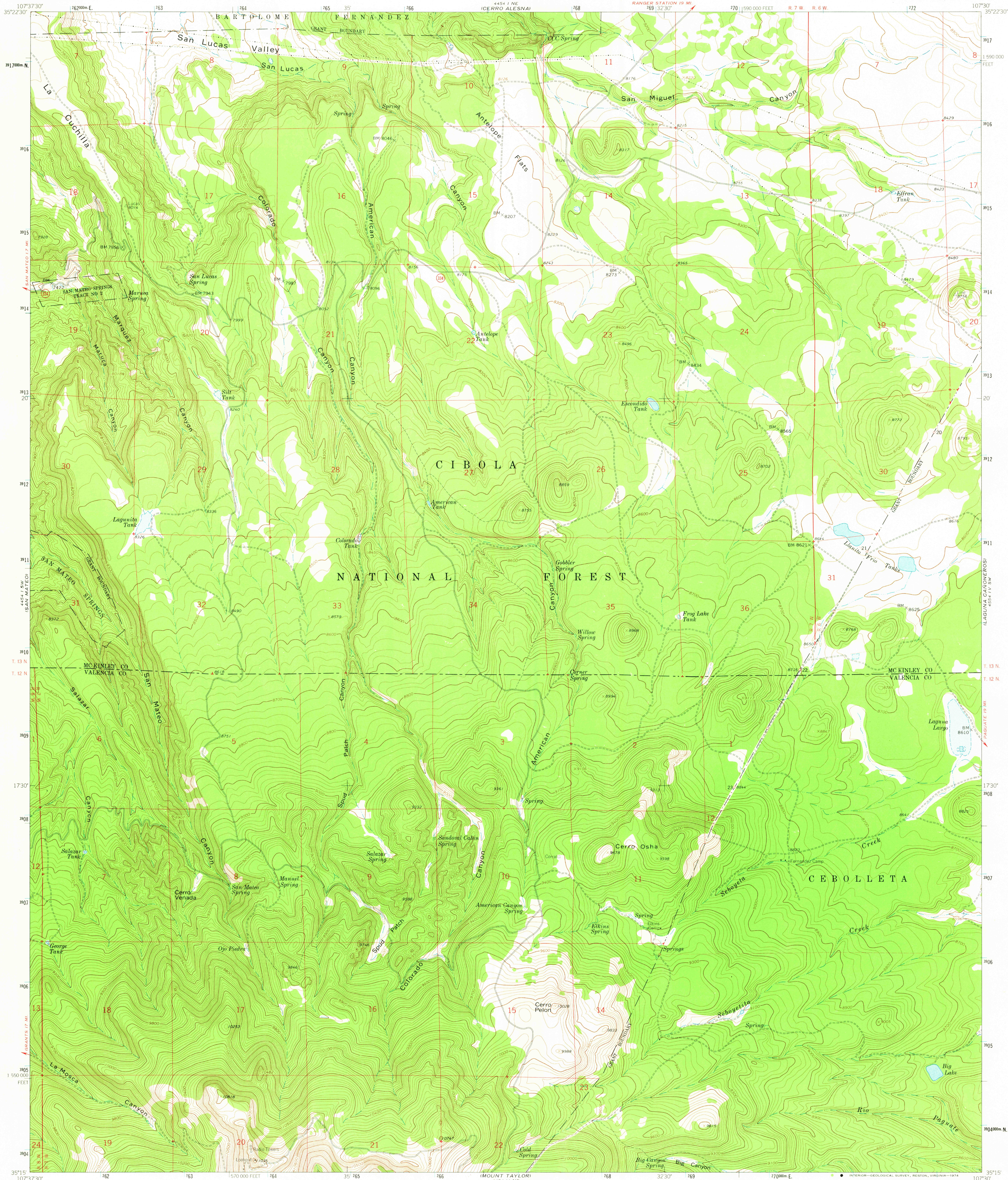


UNITED STATES
DEPARTMENT OF THE INTERIOR
GEOLOGICAL SURVEY

CERRO PELON QUADRANGLE
NEW MEXICO
7.5 MINUTE SERIES (TOPOGRAPHIC)



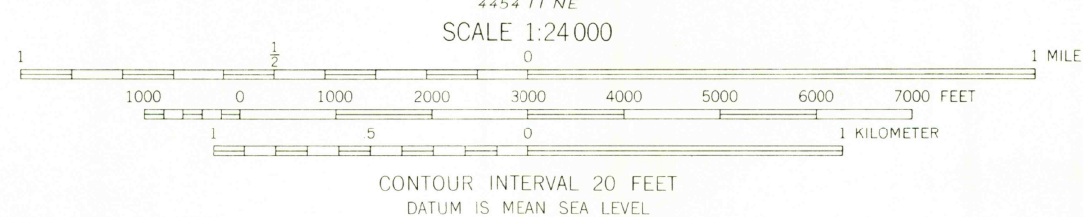
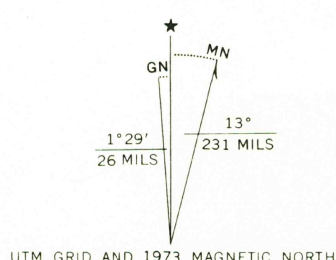
Mapped, edited, and published by the Geological Survey

Control by USGS and USC&GS

Topography by photogrammetric methods from aerial photographs taken 1958. Field checked 1963

Polyconic projection. 1927 North American datum. 10,000-foot grid based on New Mexico coordinate system, west zone. 1000-meter Universal Transverse Mercator grid ticks, zone 13, shown in blue.

Fine red dashed lines indicate selected fence lines.



THIS MAP COMPLIES WITH NATIONAL MAP ACCURACY STANDARDS
FOR SALE BY U. S. GEOLOGICAL SURVEY, DENVER, COLORADO 80225, OR RESTON, VIRGINIA 22092
A FOLDER DESCRIBING TOPOGRAPHIC MAPS AND SYMBOLS IS AVAILABLE ON REQUEST



USGS
HISTORICAL FILE
TOPOGRAPHIC DIVISION

ROAD CLASSIFICATION
Light-duty ——— Unimproved dirt ———
State Route ———

CERRO PELON, N. MEX.
N3515-W10730/7.5

1963
MINOR REVISIONS 1973
AMS 4454 I SE-SERIES V881

SEP 23 1974