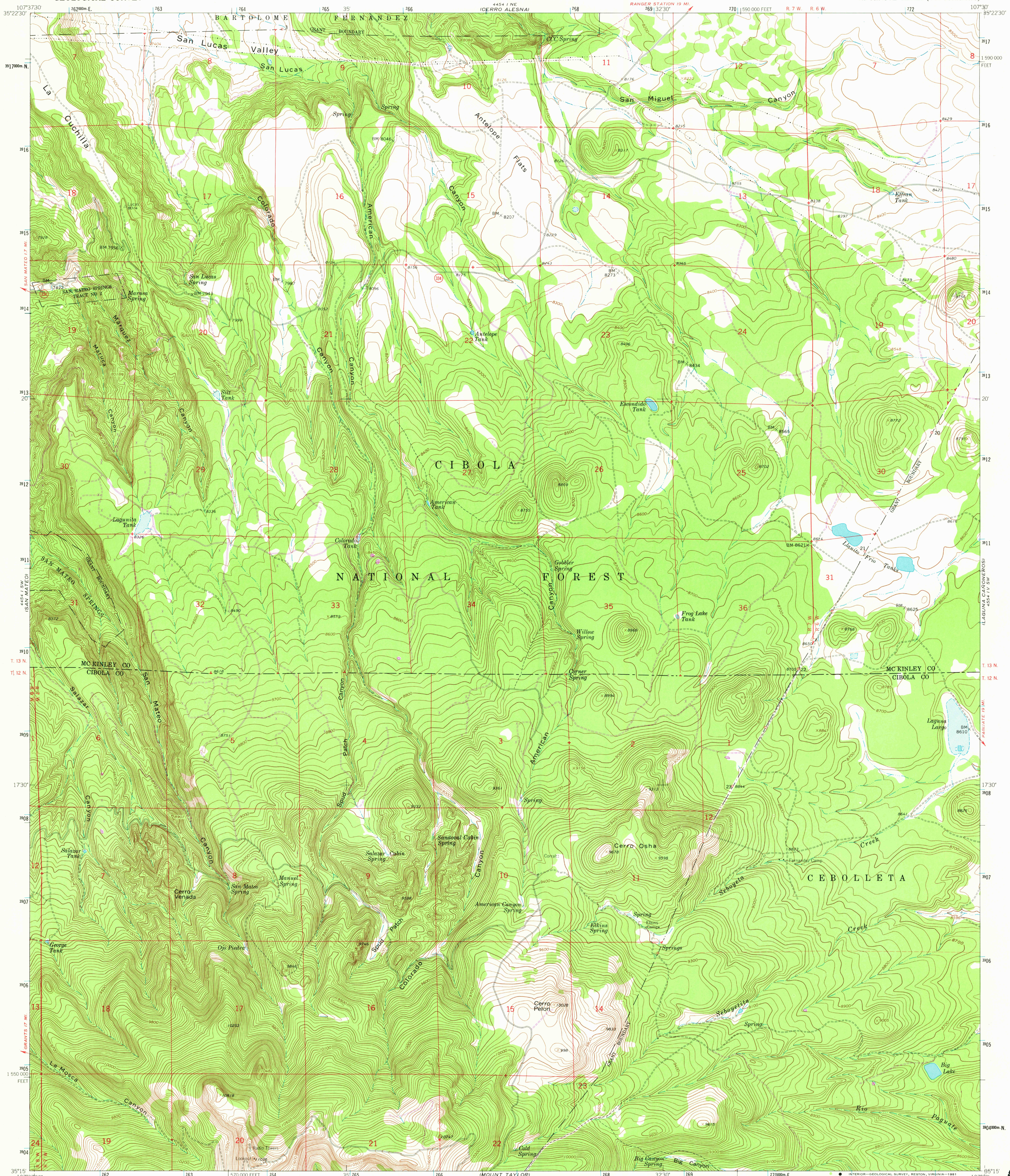


4454 I NW
SAN LUCAS DAM

4454 I NW
EL DADO MESA

UNITED STATES
DEPARTMENT OF THE INTERIOR
GEOLOGICAL SURVEY

CERRO PELON QUADRANGLE
NEW MEXICO
7.5 MINUTE SERIES (TOPOGRAPHIC)



Mapped, edited, and published by the Geological Survey

Control by USGS and NOS/NOAA

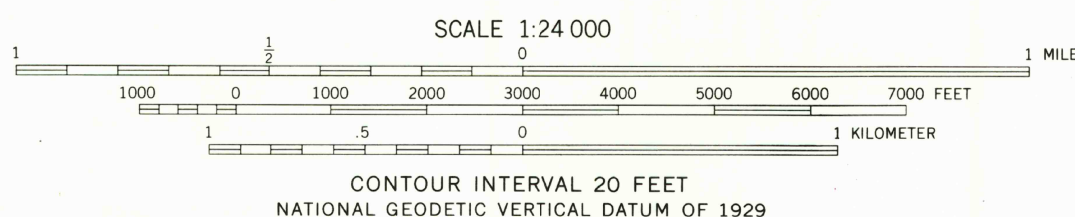
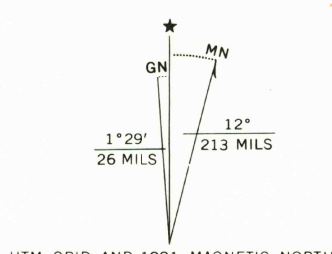
Topography by photogrammetric methods from aerial photographs taken 1958. Field checked 1963

Polycyclic projection. 1927 North American datum
10,000-foot grid based on New Mexico coordinate system, west zone
1000-meter Universal Transverse Mercator grid ticks,
zone 13, shown in blue

Fine red dashed lines indicate selected fence lines

To place on the predicted North American Datum 1983
move the projection lines 54 meters east as
shown by dashed corner ticks

There may be private inholdings within the boundaries
of the National or State reservations shown on this map



ROAD CLASSIFICATION
Light duty ——— Unimproved dirt ———
State Route

CERRO PELON, N. MEX.
N3515-W10730/7.5

1963
PHOTOGRAPHED 1981
DMA 4454 I SE-SERIES V881

Revisions shown in purple compiled from aerial photographs
taken 1978 and other source data. This information not
field checked. Map edited 1981

RETURN TO:
USGS AND HISTORICAL MAP ARCHIVES