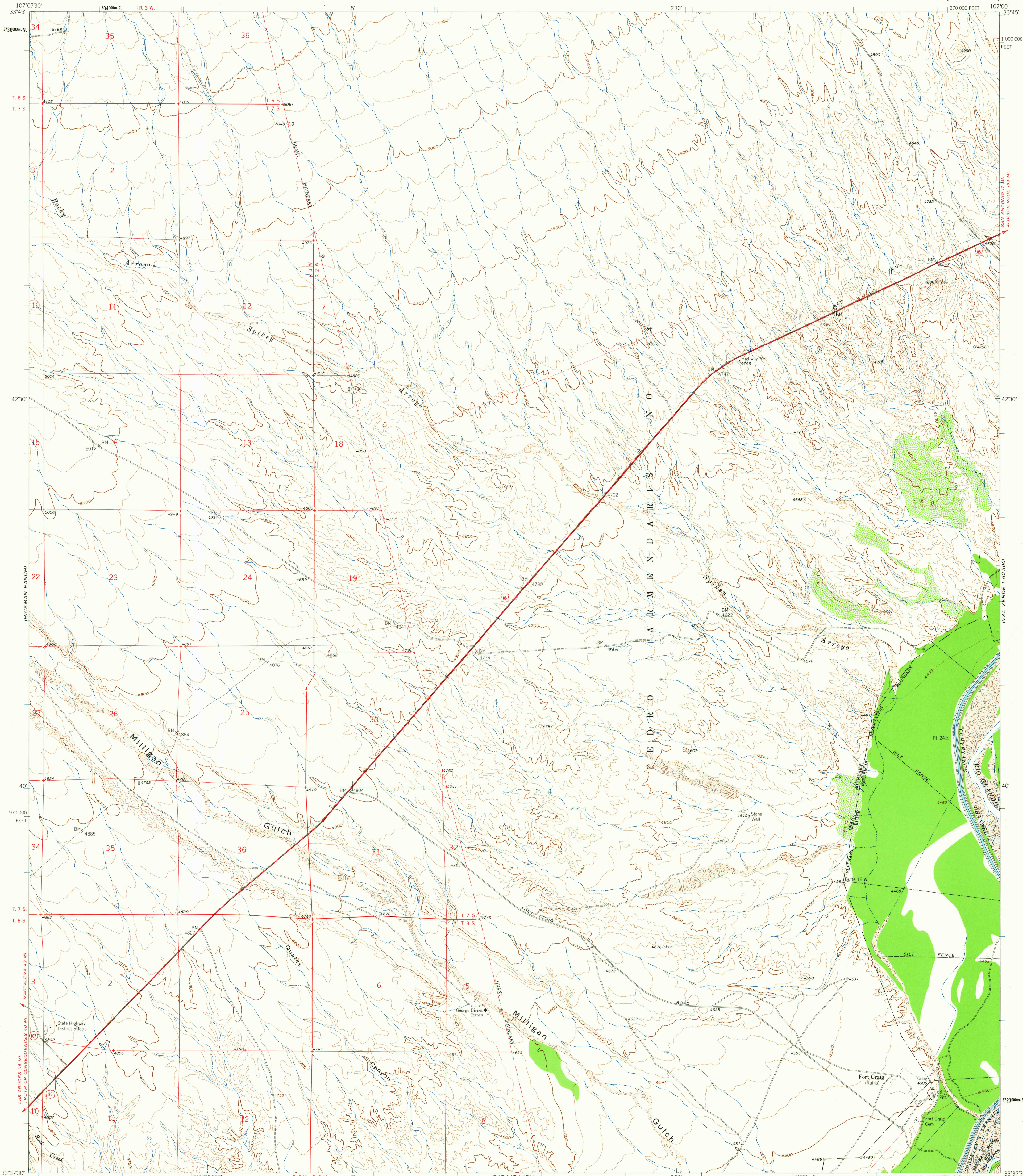


UNITED STATES
DEPARTMENT OF THE INTERIOR
GEOLOGICAL SURVEY

FORT CRAIG QUADRANGLE
NEW MEXICO-SOCORRO CO.
7.5 MINUTE SERIES (TOPOGRAPHIC)



Mapped, edited, and published by the Geological Survey

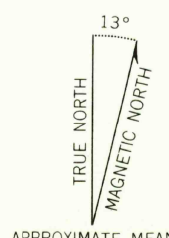
Control by USGS and USC&GS

Topography by photogrammetric methods from aerial
photographs taken 1958. Field checked 1961

Polyconic projection. 1927 North American datum
10,000-foot grid based on New Mexico coordinate system, central zone
1000-meter Universal Transverse Mercator grid ticks,
zone 13, shown in blue

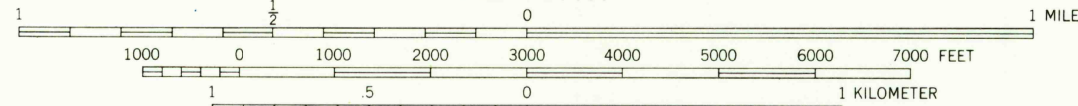
Fine red dashed lines indicate selected fence lines

Area of Elephant Butte Reservoir covered by dashed light-blue pattern
is subject to controlled inundation. Water level at date of photography
4416 feet. Average pool elevation 4359 feet. Spillway elevation 4450 feet



APPROXIMATE MEAN
DECLINATION, 1961

SCALE 1:24,000



CONTOUR INTERVAL 20 FEET
DOTTED LINES REPRESENT 10-FOOT CONTOURS
DATUM IS MEAN SEA LEVEL

USGS
Historical File
Topographic Division



QUAD'ANGLE LOCATION

ROAD CLASSIFICATION
Heavy-duty ——— Light-duty ———
Unimproved dirt ———
U.S. Route ——— State Route ———

FORT CRAIG, N. MEX.
N33375-W10700/7.5

1961

FEB 26 1964